

INSTALLATION INSTRUCTIONS

FAI/ACC AND FAI/ACC/V-
AMY OPTION
AIRCRAFT CABLE ASSEMBLIES PG. 1 OF 1

FIXTURE TYPE _____

PART NO. 510417-1000

DO NOT MODIFY OR ALTER THIS PRODUCT IN ANY WAY, OR INSTALL IN ANY FASHION WHICH IS CONTRARY TO THE INSTRUCTIONS CONTAINED HEREIN. IF YOU HAVE ANY QUESTIONS REGARDING THIS PRODUCT OR THE INSTALLATION OF IT, PLEASE CALL LITECONTROL ENGINEERING AT 781-294-0100.

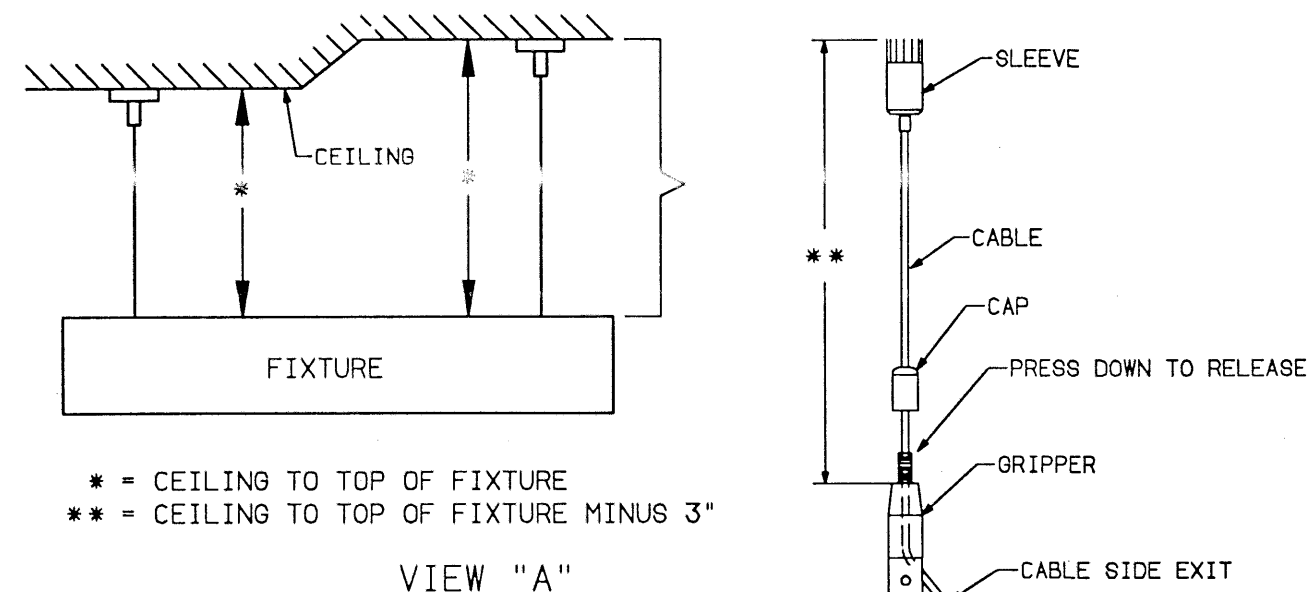
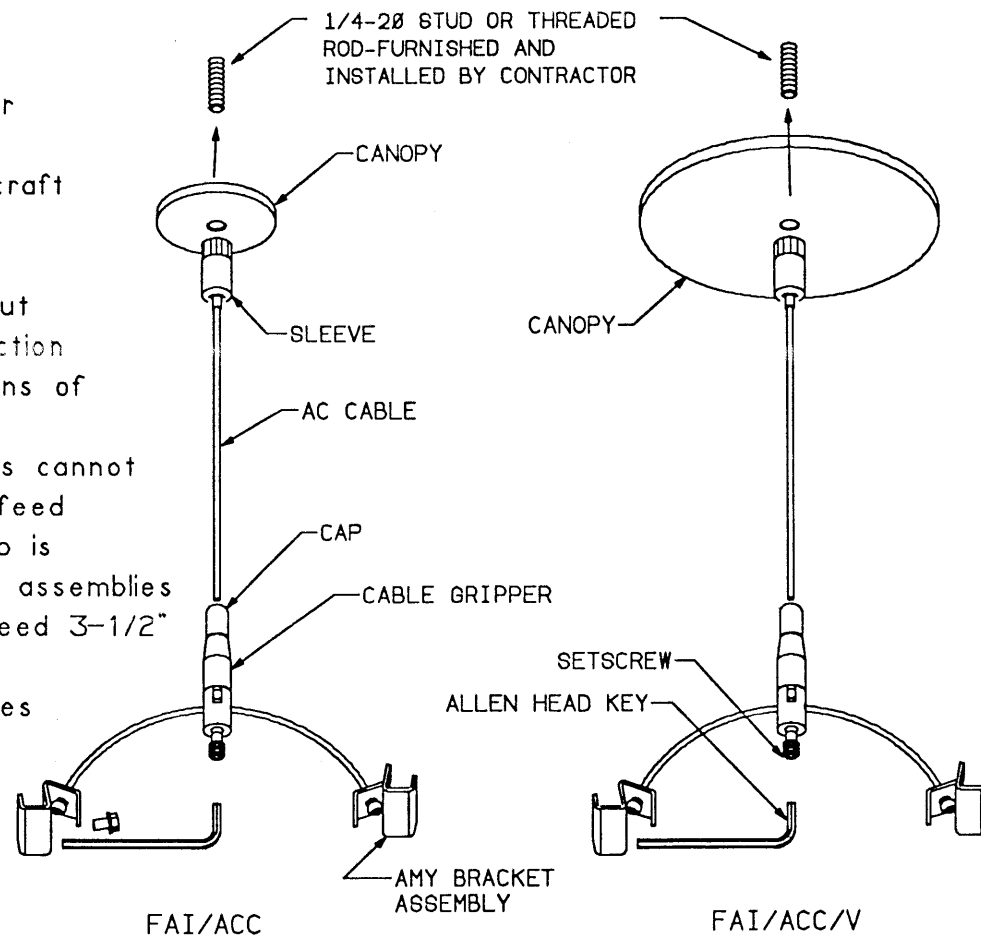
GENERAL NOTES:

1. For all aircraft cable assemblies, the contractor must securely install one 1/4-20 stud at each aircraft cable location, extending 3/4" below ceiling line. Refer to Litecontrol layout drawings and AMY instruction sheet 510419 for locations of cables.

The AMY cable assemblies cannot be installed at electrical feed locations. A support strap is provided with FAI/ACC/V assemblies for attachment to non feed 3-1/2" outlet box or handy box.

WARNING: The NEC requires that any fixture weighing more than (50) pounds be independently supported of an outlet box.

- Fixtures in rows must be supported by a minimum of one cable (or stem) at the junction of each two fixtures plus one at each end of the row. This is considered by "Underwriters Laboratories" as equivalent to two cables (or stems) per fixture.
- These fixture supports are to be used only in conjunction with LITECONTROL products for which they were furnished. DO NOT use them for support of any other items or in any fashion which is contrary to this instruction sheet.
- AMY Cable assemblies are bulk packed and assembled as shown above. Cables are provided in (3) lengths for ceiling to heights of 6"-48", 6"-84" and 6"-216".



PREPARATION OF CABLE ASSEMBLY:

- Unscrew cap from cable gripper as shown in View "A".
- Determine the distance from the ceiling to the top of the fixture and subtract 3". This is an approximate ceiling to fixture distance, final adjustment will be made after fixture(s) are hung. Slide gripper to length **, by pressing down on the spring loaded top. DO NOT screw cap back on at this time.

INSTALLATION OF CABLE ASSEMBLY TO FIXTURE:

Mount AMY brackets to both sides of housing per instruction sheet 510419.

INSTALLATION OF AMY CABLE ASSEMBLIES TO CEILING:

- Lift fixture up, place canopy over ceiling stud and screw sleeve to stud.
- While holding fixture, adjust gripper up or down on cable to position fixture in its final location and level. Thread caps back onto grippers.
- Loosen setscrew with allen head key and slide gripper on Bow Cable to level fixture from side to side, then retighten setscrew.
- Trim off excess cable extending out side of gripper.

