

**INSTALLATION INSTRUCTIONS**

FIXTURE TYPE \_\_\_\_\_

**PENDANT BRACKETS  
P-S/D-1800  
S-S/D-1800**

P/C 510450-0000

DATE: 5-30-03

PG. 1 OF 2

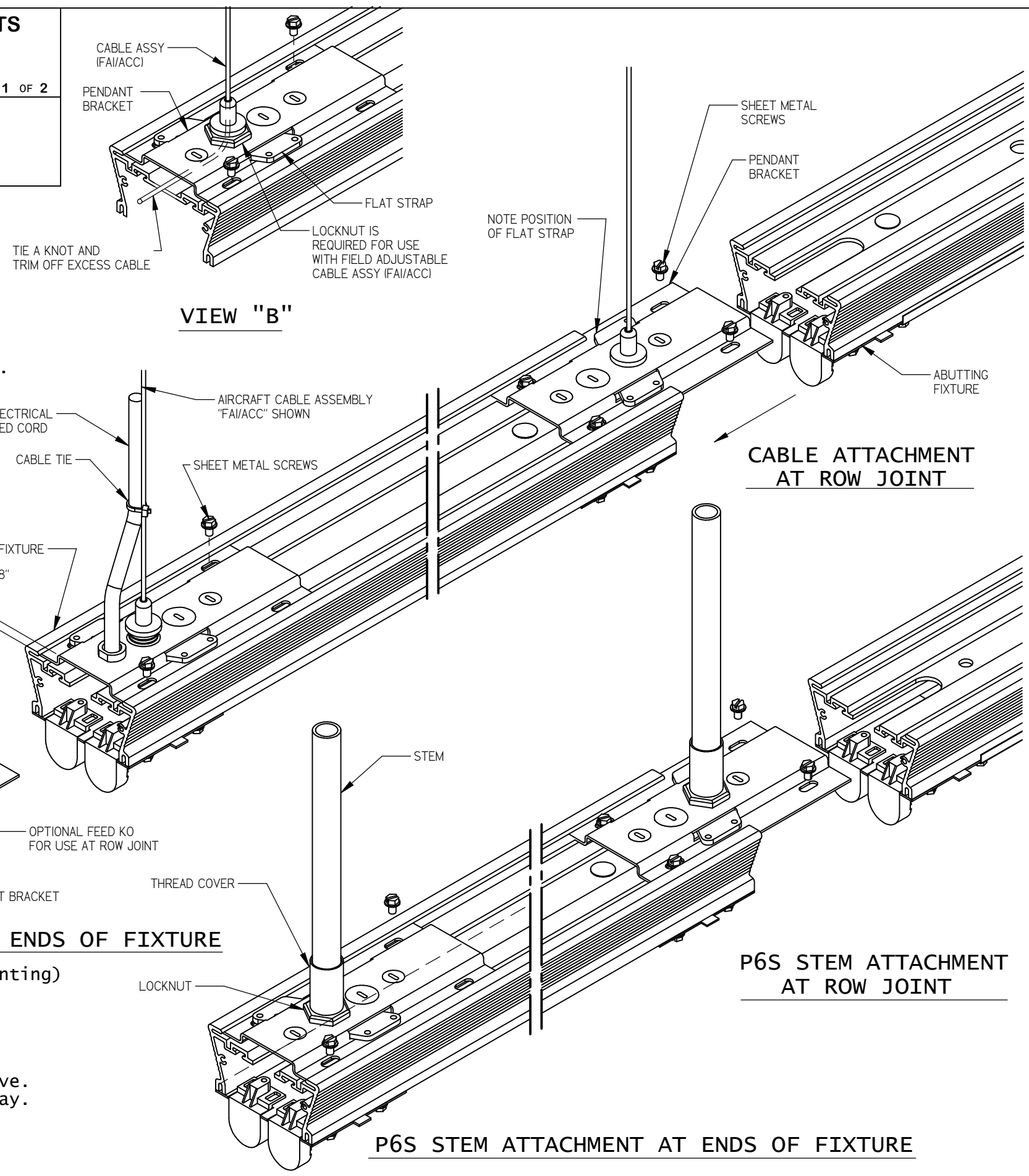
DO NOT MODIFY OR ALTER THIS PRODUCT IN ANY WAY, OR INSTALL IN ANY FASHION WHICH IS CONTRARY TO THE INSTRUCTIONS CONTAINED HEREIN. IF YOU HAVE ANY QUESTIONS REGARDING THIS PRODUCT OR THE INSTALLATION OF IT, PLEASE CALL LITECONTROL ENGINEERING AT 781-294-0100.

**GENERAL NOTES:**

1. This instruction sheet is used with pendant and fixture Installation Instructions which are shipped separately.
2. Refer to page 2 for Surface Mounted Fixtures.

**INSTRUCTIONS FOR PENDANT MOUNTING:**

1. Pendant Brackets are required at each pendant (cable or stem) location and are also required when attaching fixture directly to ceiling or surface.
2. Pendant Brackets used at both ends of an Individually mounted Fixture and at the end of the first and last fixture in a row are positioned 1/8" in from fixture end to allow for End Cap Attachment later.
3. Note position of Pendant Bracket and remove the correct knockouts as shown. Slide a Flat Strap (shipped with pendants) into cutout in side of bracket. The position of the Flat Strap is different when used at Row Joint.
4. Slide this assembly into the grooves on the top of fixture and secure in place with two 1/4" long sheet metal screws. Note: For fixtures in rows, the Pendant Bracket extends half way out end of fixture at row joint.
5. Cables or Stems are threaded into Flat Straps and Fixture is lifted up and attached to ceiling. Level this fixture.
6. Abutting fixture in rows will have another pendant bracket mounted at the far end per steps above. The open end of the fixture is now slid onto the Bracket extending half way out of the first fixture until the housings butt up against each other. Level fixture and then secure this Bracket in place with two more sheet metal screws. Repeat this step for each additional fixture in row.
7. **ADJUSTABLE LOCATIONS:** (Pendant Mounting Only, not available for surface Mounting) Additional Pendant Brackets can be slid along the top of the fixture to suit an existing retrofit location with following restrictions. Refer to View B.
  - A) Bracket can only be used at a non-feed location. Feed is brought in at normal End of Row or at Row Joint location per above.
  - B) Brackets are still required at their normal positions to close off wireway.
  - C) Fixture cannot be cantilevered for more than 24" from one end.



INSTALLATION  
INSTRUCTIONS

FIXTURE TYPE \_\_\_\_\_

PENDANT BRACKETS  
P-S/D-1800  
S-S/D-1800

P/C 510450-0000

DATE: 5-30-03

PG. 2 OF 2

DO NOT MODIFY OR ALTER THIS PRODUCT IN ANY WAY, OR INSTALL IN ANY FASHION WHICH IS CONTRARY TO THE INSTRUCTIONS CONTAINED HEREIN.  
IF YOU HAVE ANY QUESTIONS REGARDING THIS PRODUCT OR THE INSTALLATION OF IT, PLEASE CALL LITECONTROL ENGINEERING AT 781-294-0100.

GENERAL NOTE:

Outlet boxes used for surface mounting require a plaster ring or equal to reduce the opening down to a 2" x 4" handy box size or less. (4" leg runs parallel with length of fixture).  
Fixture cannot be directly attached to an outlet box and must be independently supported to structure.

INSTRUCTIONS FOR SURFACE MOUNTED FIXTURES:

1. Remove Reflectors from fixture by loosening 4 sheet metal screws; See view A.
2. Two Pendant Brackets are required for each individually mounted fixture and one per fixture plus one at each row joint for fixtures in rows.
3. Pendant Brackets are positioned 1/8" in from fixture end to allow for End Cap Attachment later. Refer to page one of this instruction sheet.
4. Note position of Pendant Bracket and remove the knockouts when bracket is used at ends of fixture. It is not necessary to remove any knockouts when Bracket is used at a row joint unless electrical feed is being brought into fixture at this location.
5. Fixtures are supplied with Plug Buttons installed in top of fixture that must be popped out for surface mounting. Discard Buttons.
6. Slide Pendant Brackets into the grooves on the top of fixture and secure in place with two 1/4" long sheet metal screws. Note: For fixtures in rows, the Pendant Bracket extends half way out end of fixture at row joint.
7. Lift Fixture up to mounting surface and bring electrical feed in thru 7/8" knockout in Bracket. Secure fixture to surface with (2) screws (supplied by contractor) from inside fixture. Level this fixture.
8. Abutting fixture in rows will have another pendant bracket mounted at the far end per steps above.  
The open end of the fixture is now slid onto the Bracket extending half way out of the first fixture until the housings butt up against each other. The mounting screw is used to keep fixtures in line and row joint tight. Level fixture by adjusting depth of mounting screw. Repeat this step for each additional fixture in row. Replace Reflectors after wiring is completed.
9. ADJUSTABLE LOCATIONS: Not available for Surface Mounting.

