

Classica™ P-I-5500 Pendant-Mounted Indirect

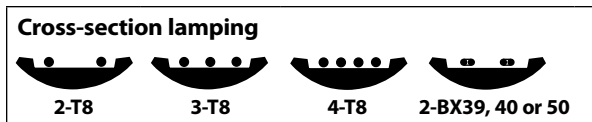
Product Description

Graceful curved housing that combines an extruded aluminum bottom portion with perforated steel side panels. Die cast aluminum end caps and joiners to accentuate the classic shape. UL Listed. Cradle to Cradle Silver CertifiedSM

Ordering Guide

Product, lamping, & length						Options					
P -	I -	55	2	4	T8 -	CWM -	ELB10 -	TW -	2CWQ -	F -	120
Mounting	Distribution	Series	Lamp Count	Nominal Length (ft)	Lamp Type	Finish	Ballasts	Tandem Wiring	Pre-wiring	Other Options	Volts
P Pendant-mounted	I Indirect	55	2, 3, 4 → 2, 3, 4 → 2, 3, 4 → 4, 6, 8 → 4, 6, 8 → 4 → 8 →	2 → 3 → 4 → 6 → 8 → 3 → 6 →	T8 BX39 BX40 BX50	CWM (matte white) is standard see LiteColors™ for other finishes	ELB10 is standard DA/MK7 DL/ECO DO/HEL see Ballast Options	-- → TW → see notes	1CWQ 2CWQ	EF F LK see Other Options	120 277
Mounting Options - add to end of catalog number Aircraft cables <input type="checkbox"/> FAI/ACC (field adjustable) standard Stems <input type="checkbox"/> P6S (stem) <input type="checkbox"/> SC/P6 (sloped ceiling) <input type="checkbox"/> EQ/P6 (earthquake)						notes: Lamp count = total number of lamps in the fixture Fixtures are oversized, row information is required For ordering guide information in shaded areas, choose selection by reading ACROSS the shaded areas for correct specifications.					

P-I-5524T8-CWM-ELB10-TW-2CWQ-F-120-FAI/ACC is a typical catalog number for a 2-lamp (2 lamps in cross-section), 4-foot long T8 fixture, with matte white finish, electronic ballast, tandem-wired, pre-wired with two-circuit branch wiring and quick-connects, fuse, 120 volts, mounted with field adjustable aircraft cables.



Ballast Options

- DA/MK7** Advance Mark VII dimming ballast.
- DL/ECO** Lutron ECO-10 dimming ballast.
- DO/HEL** Osram Sylvania Helios dimming ballast.

Tandem Wiring & Circuiting Options

- 1CWQ** Fixture is wired with a single-circuit so that all lamps are switched together.
- TW-2CWQ** Fixtures wired with two circuits. 2-lamp in cross section fixtures, the fixture is wired such that the inline lamps are switched separately.

Other Options

- EF** Emergency fluorescent ballast. Battery-powered ballast from a UL Listed manufacturer will operate one lamp for 1 1/2 hours.
- F** Fuse. Slow or fast blow, determined by Litecontrol.
- LK** Lens Kit dust cover that serves as a top cover over the lamps.

Questions to Ask

1. Row information, including desired fixture lengths? 2. Lamp type?
3. White, LiteColor, or special color? 4. Ballast options?
5. Tandem wiring? 6. Other options? 7. 120 or 277 volt?

Specifications

HOUSING. Standard Perforations: Sides are die-formed steel with .062" diameter staggered holes .125" OC, 74 holes per square inch, 23% open. White acrylic diffusing panels retained behind. Bottom of housing is .100" thick extruded aluminum.

END CAPS. Die-cast .075" thick aluminum, 1 1/2" long, with no holes or knockouts, enclosing pendant attachments and wiring. Fasteners on each end cap allow close, fast attachments at ends of individual fixtures and ends of rows, finished to match housing.

REFLECTOR. Die-formed specular slotted aluminum.

LAMPING. Available in two-, three- and four-lamp T8 and two-lamp twin-tube compact fluorescent.

BALLAST. Electronic Ballast (**ELB10**) high power factor, thermally protected Class P, Sound Rated A, manufactured by a UL Listed manufacturer, as available, determined by Litecontrol. Ballasts with a voltage range of 120 to 277 will be used when fixture configuration and ballast availability allow. The minimum number of ballasts will be used.

TANDEM WIRING. When selected from Ordering guide below, fixtures wired to switch in-line lamps separately, providing two or three (two-, three- or four-lamp cross-section fixtures only) levels of light.

CIRCUITING. Fixtures are supplied with #12 AWG type THHN wire for branch circuits. One end will have factory-installed push-in quick-connects. The other end will be stripped back 1/2" for quick connection in field. For fixtures to accommodate special circuits such as night light and emergency, etc., in-field wiring will be required. See Pre-wiring Information for details.

BALLAST DISCONNECT. Fixture supplied with a ballast disconnect device to enable compliance with the NEC.


ROW JOINING. Litecontrol's at-joint flat strap supporting two fixtures allows simple fixture joining and installation. Support points are centered above the midpoint of joint "on seam" for aligned, symmetrical appearance. Fixture end headers are threaded in two locations to allow easy row joining without removing reflectors.

SYSTEM CONNECTORS. Corners, tees, and crosses available. Connectors are .100" thick extruded aluminum, to be smooth with no exposed fasteners or knockouts. Each system connector shall have a rigid cross-member with a .687" diameter stem hole at center to accept any of Litecontrol's pendant assemblies.

INTERMEDIATE CONNECTOR. A die-cast .075" thick aluminum intermediate connector is provided, in place, at the center of 6-foot and 8-foot fixtures. The same connector is supplied to join individual fixtures in rows with no visible fasteners. The connector, 2" long, matches the curved shape of the housing, and is recessed from the housing by 5/8", finished to match housing.

ROW LENGTHS. Total row length is based on total number of 2" intermediate connectors between either 3-foot or 4-foot lamp chambers plus 1 1/2" for end cap at each end (3" total).

SUSPENSION. Aircraft cable or rigid stem pendants attach to fixture using Litecontrol's easy-hang system, with one attachment plate for use at any support point. Standard suspension provided is field adjustable aircraft cable (**FAI/ACC**) with a 51" length cable. See Aircraft Cables and Stems for details.

CERTIFICATION. Fixture and electrical components shall be UL and/or CUL Listed and shall bear the I.B.E.W., A.F. of L. label.  This fixture is Cradle to Cradle CertifiedSM Silver by MBDC. Note: Litecontrol reserves the right to change specifications without notice for product development and improvement.

Planning for installation

Suspension Assemblies

Provided with P6S (5/8" dia., 3/8" NPT) stems, or 3/32" diameter aircraft cable assemblies. Stems with 0-45° swivel joints are available. Aircraft cable is provided at fixed lengths (with 1/4-20 stud adjustment for leveling purposes), or may be ordered with "field-adjustable" fittings that allow unlimited vertical positioning and adjustment. See Stems & Aircraft Cables sheets for further details.

Stem Lengths

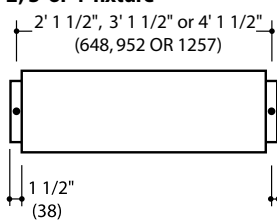
P6S stems are available in eight standard lengths from 6" to 36" (nominal). For Classica, the actual ceiling-to-top-of-fixture dimensions for each of the standard lengths are: 6", 9", 12", 15", 18", 24", 28", and 36". Refer to Standard Length Stem Assemblies sheet for dimensional information on sloped ceiling (SC/P6) and earthquake (EQ/P6) stem assemblies.

Suspension Mounting Locations

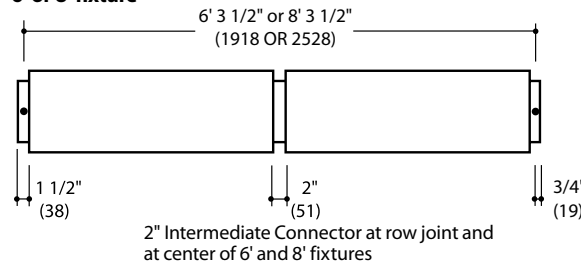
Pendant locations at ends of rows (or individual fixtures) are 3/4" from fixture end. Pendant locations in between fixtures are at center of intermediate connector.

Fixtures are oversized, row information is required.

2', 3' or 4' fixture

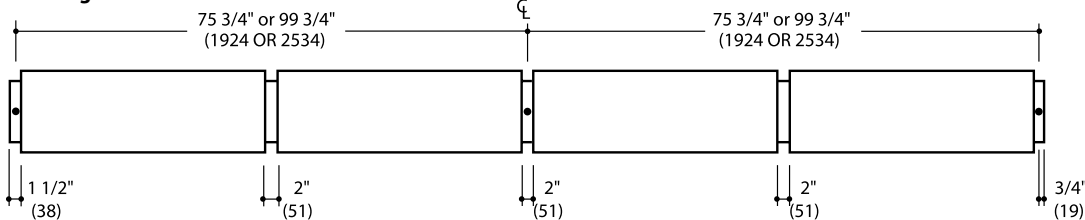


6' or 8' fixture



Fixture lengths: 2' 3", 3' 3", 4' 3", 6' 5", 8' 5"
• indicates pendant location

Row diagram



Note: spacing between mounting points for individual fixtures of 3', 4', 6' and 8' (nominal) is: 37 1/2", 49 1/2", 75 1/2", 99 1/2", respectively.

LITECONTROL

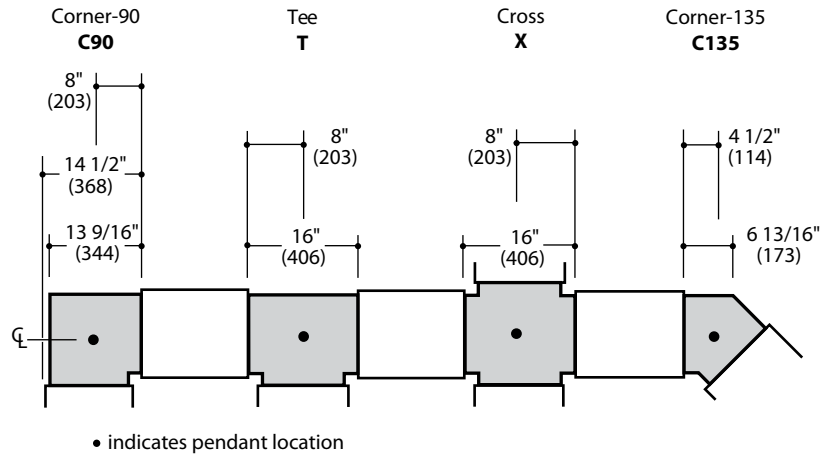
100 Hawks Avenue Hanson, MA 02341
781 294 0100 f: 781 293 2849 litecontrol.com



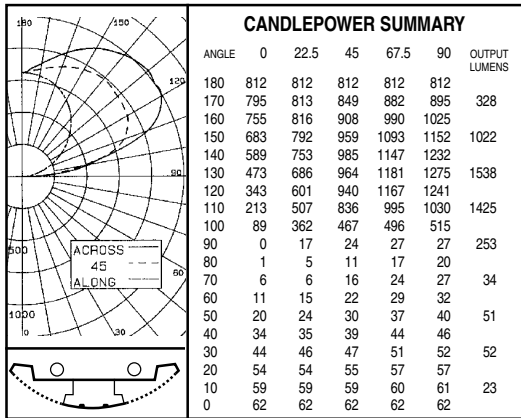
System connectors

Catalog Number		
Series	Connector	Finish
P-I-5500	C90	
P-I-5500	C135	
P-I-5500	T	
P-I-5500	X	

P-I-5500-C90-CWM is a typical catalog number for a 90° corner connector finished Matte White.



Photometric data

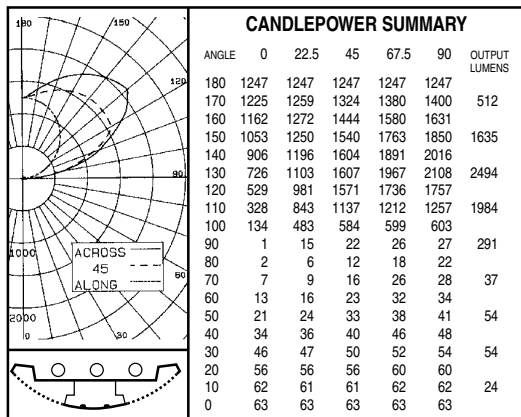


RCC	80				70				50				30				10				0
	70	50	30	10	70	50	30	10	50	30	10	50	30	10	50	30	10	50	30	10	
RCR																					
0	.78	.78	.78	.78	.67	.67	.67	.67	.47	.47	.47	.28	.28	.28	.11	.11	.11	.11	.03		
1	.71	.68	.65	.62	.61	.58	.56	.53	.41	.39	.38	.25	.24	.23	.10	.09	.09	.09	.02		
2	.65	.59	.54	.50	.55	.51	.47	.44	.36	.33	.31	.21	.20	.19	.08	.08	.08	.08	.02		
3	.59	.52	.46	.42	.50	.45	.40	.37	.31	.29	.26	.19	.18	.16	.07	.07	.07	.07	.02		
4	.54	.46	.40	.35	.46	.40	.35	.31	.28	.25	.22	.17	.15	.14	.07	.06	.06	.06	.01		
5	.49	.40	.34	.30	.42	.35	.30	.26	.25	.21	.19	.15	.13	.12	.06	.05	.05	.05	.01		
6	.45	.36	.30	.26	.39	.31	.26	.22	.22	.19	.16	.13	.12	.10	.05	.05	.04	.04	.01		
7	.41	.32	.26	.22	.35	.28	.23	.19	.20	.16	.14	.12	.10	.09	.05	.04	.04	.04	.01		
8	.38	.29	.23	.19	.33	.25	.20	.17	.18	.14	.12	.11	.09	.08	.04	.04	.03	.03	.01		
9	.35	.26	.20	.17	.30	.23	.18	.15	.16	.13	.11	.10	.08	.07	.04	.03	.03	.03	.01		
10	.33	.24	.18	.15	.28	.21	.16	.13	.15	.12	.09	.09	.07	.06	.04	.03	.02	.02	.01		

Floor Cavity Reflectance .20

ZONE	LUMENS	% LAMP	% LUMINAIRE
180-90°	4547	78.4	96.4
90-0°	170	2.93	3.6
180-0°	4717	81.33	100

ANGLE	0°	45°	90°
45°	36	39	44
55°	26	33	42
65°	20	30	42
75°	17	26	43
85°	11	30	39

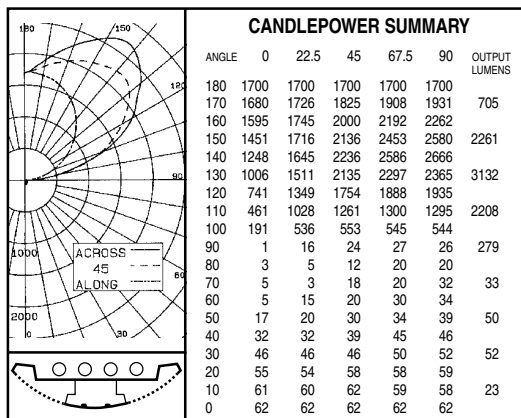


RCC	80				70				50				30				10				0
	70	50	30	10	70	50	30	10	50	30	10	50	30	10	50	30	10	50	30	10	
RCR																					
0	.78	.78	.78	.78	.67	.67	.67	.67	.46	.46	.46	.27	.27	.27	.10	.10	.10	.10	.02		
1	.71	.68	.65	.62	.61	.58	.56	.53	.40	.39	.38	.24	.23	.23	.09	.09	.08	.08	.02		
2	.64	.59	.54	.50	.55	.51	.47	.44	.35	.33	.31	.21	.20	.19	.08	.07	.07	.07	.01		
3	.59	.52	.46	.42	.50	.44	.40	.37	.31	.28	.26	.19	.17	.16	.07	.06	.06	.06	.01		
4	.54	.46	.40	.35	.46	.39	.34	.31	.27	.24	.22	.16	.15	.13	.06	.06	.05	.05	.01		
5	.49	.39	.34	.30	.42	.35	.30	.26	.24	.21	.19	.15	.13	.11	.05	.05	.04	.04	.01		
6	.45	.36	.30	.25	.38	.31	.26	.22	.22	.18	.16	.13	.11	.10	.05	.04	.04	.04	.01		
7	.41	.32	.26	.22	.35	.28	.23	.19	.19	.16	.14	.12	.10	.08	.04	.04	.03	.03	.01		
8	.38	.29	.23	.19	.32	.25	.20	.17	.17	.14	.12	.11	.09	.07	.04	.03	.03	.03	.01		
9	.35	.26	.20	.17	.30	.22	.18	.15	.16	.13	.10	.10	.08	.06	.04	.03	.03	.03	.01		
10	.33	.24	.18	.15	.28	.20	.16	.13	.14	.11	.09	.09	.07	.06	.03	.03	.02	.02	.01		

Floor Cavity Reflectance .20

ZONE	LUMENS	% LAMP	% LUMINAIRE
180-90°	6896	79.27	97.49
90-0°	177	2.04	2.51
180-0°	7073	81.31	100

ANGLE	0°	45°	90°
45°	38	41	37
55°	28	36	44
65°	22	31	47
75°	19	32	46
85°	10	30	43



RCC	80				70				50				30				10				0
	70	50	30	10	70	50	30	10	50	30	10	50	30	10	50	30	10	50	30	10	
RCR																					
0	.72	.72	.72	.72	.62	.62	.62	.62	.43	.43	.43	.25	.25	.25	.09	.09	.09	.09	.01		
1	.66	.62	.60	.57	.56	.54	.51	.49	.37	.36	.35	.22	.21	.21	.08	.08	.07	.07	.01		
2	.59	.54	.50	.46	.51	.47	.43	.40	.32	.30	.28	.19	.18	.17	.07	.07	.06	.06	.01		
3	.54	.48	.43	.39	.46	.41	.37	.34	.29	.26	.24	.17	.16	.14	.06	.06	.05	.05	.01		
4	.49	.42	.37	.33	.42	.36	.32	.28	.25	.22	.20	.15	.13	.12	.05	.05	.05	.05	.01		
5	.45	.37	.32	.28	.39	.32	.28	.24	.22	.19	.17	.13	.12	.10	.05	.04	.04	.04	.01		
6	.41	.33	.28	.24	.35	.29	.24	.21	.20	.17	.15	.12	.10	.09	.04	.04	.03	.03	.01		
7	.38	.30	.24	.20	.33	.26	.21	.18	.18	.15	.13	.11	.09	.08	.04	.03	.03	.03	.01		
8	.35	.27	.21	.18	.30	.23	.18	.15	.16	.13	.11	.10	.08	.07	.03	.03	.03	.03	.01		
9	.32	.24	.19	.15	.28	.21	.16	.13	.15	.12	.10	.09	.07	.06	.03	.03	.02	.02	.01		
10	.30	.22	.17	.14	.26	.19	.15	.12	.13	.10	.08	.08	.06	.05	.03	.02	.02	.02	.01		

Floor Cavity Reflectance .20

ZONE	LUMENS	% LAMP	% LUMINAIRE
180-90°	8567	73.86	98.1
90-0°	166	1.43	1.9
180-0°	8733	75.29	100

ANGLE	0°	45°	90°
45°	35	38	48
55°	27	31	42
65°	16	27	44
75°	12	33	40
85°	28	17	40

