

**INSTALLATION
INSTRUCTIONS**

FIXTURE TYPE _____

**P-S/I-5400 T8
FIXTURE ASSEMBLY**

P/C 510371-1000

DATE: 4-9-03

PG. 1 OF 2

DO NOT MODIFY OR ALTER THIS PRODUCT IN ANY WAY, OR INSTALL IN ANY FASHION WHICH IS CONTRARY TO THE INSTRUCTIONS CONTAINED HEREIN. IF YOU HAVE ANY QUESTIONS REGARDING THIS PRODUCT OR THE INSTALLATION OF IT, PLEASE CALL LITECONTROL ENGINEERING AT 781-294-0100.

General Notes: Read Instructions completely before starting.

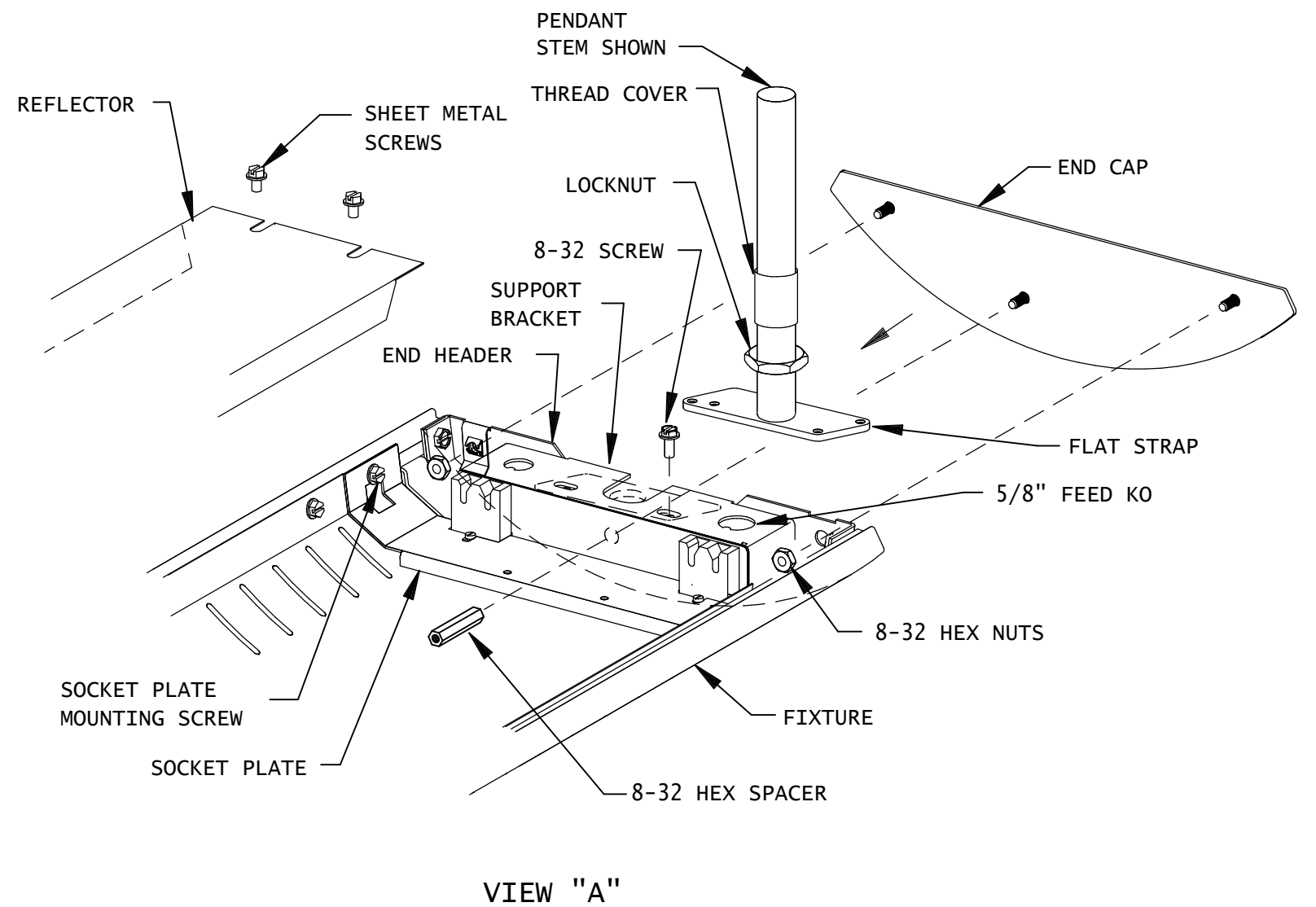
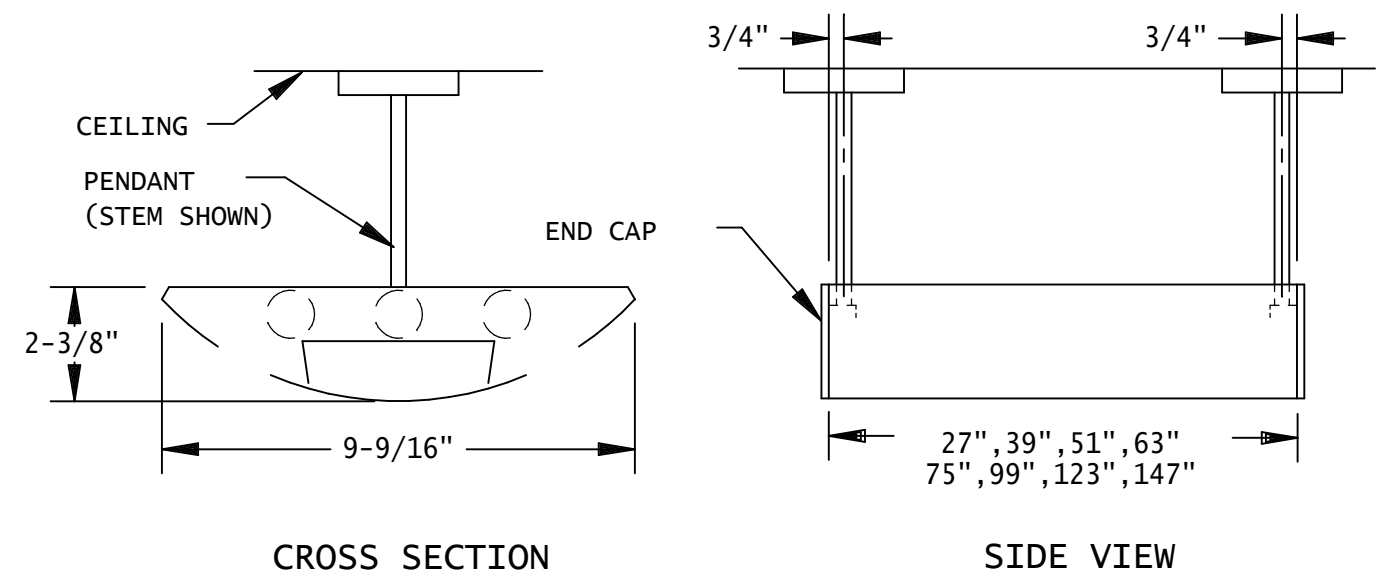
- A. Reflector types and lamp quantity may vary within this fixture family but the general installation is the same for all.
- B. Leaving foam wrapping on fixtures until mounting has been completed will help protect finish from damage.

INSTRUCTIONS:

1. Peel back foam wrapping from fixture and lift reflectors out by removing (2) sheet metal screws at one end and loosening the (2) screws at other end of reflector. See View "A".

2. MOUNTING INDIVIDUAL FIXTURES:

- A) Locate pendants in ceiling, along a straight line as shown in Side View above. Refer to Pendant Instruction sheet shipped separately.
- B) Slide a Thread Cover onto bottom of stem and Thread a locknut and a Flat Strap onto stem or aircraft cable stud. See View "A". Slide strap underneath support bracket and secure strap with (1) #8-32 x 3/8" long machine screw. Repeat this step at other end of fixture.
- C) Remove a 5/8" KO in support bracket for wire feed if aircraft cables are used to hang fixture. Feed may be run inside stems when they are used.
- D) Mount an End Cap (shipped separately) to each end of fixture by inserting end cap studs thru holes in end headers. Secure top studs with (2) 8-32 nuts and lower stud with 8-32 Hex Spacer. Make sure end caps are flush with ends of fixture.
- E) Lift fixture and mount pendants to ceiling. Level fixture up or down by threading stems or cable studs into Flat Staps. Level fixture horizontally by loosening the #8-32 screws and slide flat straps from side to side while lifting up end of fixture. Tighten locknuts and screws after fixture is level.
- F) GO TO STEP 5 on page 2.



INSTALLATION
INSTRUCTIONS

FIXTURE TYPE _____

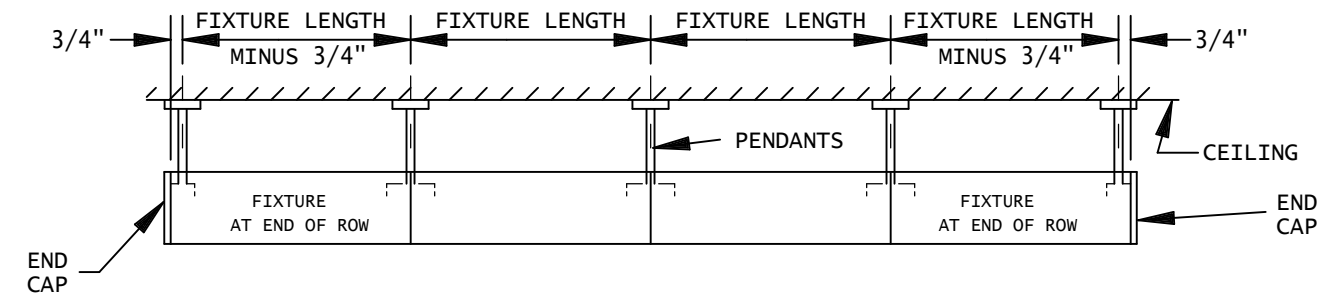
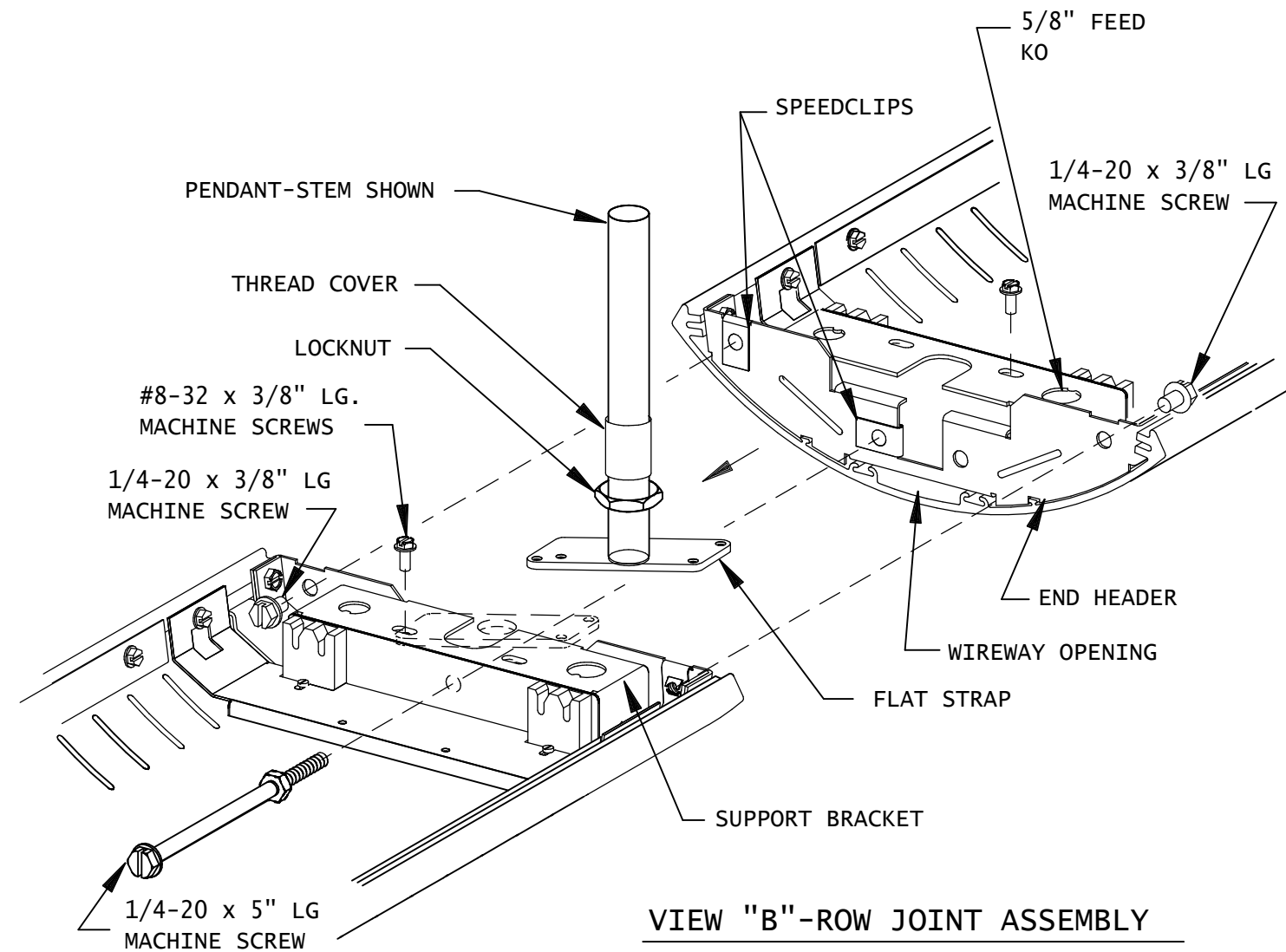
P-S/I-5400 T8
FIXTURE ASSEMBLY

P/C 510371-1000

DATE: 4-9-03

PG. 2 OF 2

DO NOT MODIFY OR ALTER THIS PRODUCT IN ANY WAY, OR INSTALL IN ANY FASHION WHICH IS CONTRARY TO THE INSTRUCTIONS CONTAINED HEREIN. IF YOU HAVE ANY QUESTIONS REGARDING THIS PRODUCT OR THE INSTALLATION OF IT, PLEASE CALL LITECONTROL ENGINEERING AT 781-294-0100.



SIDE VIEW-ROW MOUNTED FIXTURES

INSTRUCTIONS con't:

3. MOUNTING ROWS OF FIXTURES:

- A) Locate pendants in ceiling, along a straight line as shown in Side View above. Refer to Pendant Instruction sheet shipped separately.
- B) Starting with the fixture at one end of row, attach a Thread Cover, Locknut, Flat Strap and a pendant underneath the Support Bracket per step 2B. Mount an End Cap to both end of row fixtures.
- C) Remove a 5/8" KO in support bracket for wire feed if aircraft cables are being used to hang fixtures. Feed may be run inside stems when they are used.
- D) At opposite end of this fixture, loosely mount a Flat Strap underneath the support bracket with (1) #8-32 x 3/8" long machine screw. (See View "B") Thread a Locknut onto pendant and thread pendant into flat strap. NOTE: Position Flat Strap so that it projects out from end of fixture.
- E) Lift fixture up and mount pendants to ceiling.
- F) At the far end of the 2nd fixture in row, mount a Thread Cover, Flat Strap, locknut and pendant to its support bracket per step 3D above. Lift open end of this fixture onto the Flat strap of 1st fixture and attach pendant end to ceiling. Grasp pendant at row joint and rotate Flat Strap until diagonal mounting hole aligns underneath the Support Bracket slot of 2nd fixture. Secure with (1) #8-32 x 3/8" long machine screw.
- G) Remove 1/4-20 screws from polybag kit shipped with fixture. Loosely bolt both fixtures together thru the holes in end headers into the speed clips: (1) 1/4-20 x 5" long screw is used in one of the lower holes and (2) 1/4-20 x 3/8" long machine screws are used in the upper set of holes.
- H) Level fixtures up or down by threading stems or cable studs into flat straps. Level fixtures horizontally by sliding flat straps from side to side while lifting up end of fixture.
- J) Repeat steps F and G for each additional fixture in row. After row is hung and leveled, tighten all row mounting bolts and flat strap screws.

4. Wire feed may be brought into abutting fixtures thru wireway opening in End Headers. Make wiring connections.
5. Raise and secure all pendant canopies. Replace reflectors.
6. Clean exterior surfaces of fixture with a window cleaner and install lamps (by others).