

INSTALLATION INSTRUCTIONS

ACC/H and ACC-JSA AIRCRAFT CABLE ASSEMBLIES

PART
NO. **510228-3000**

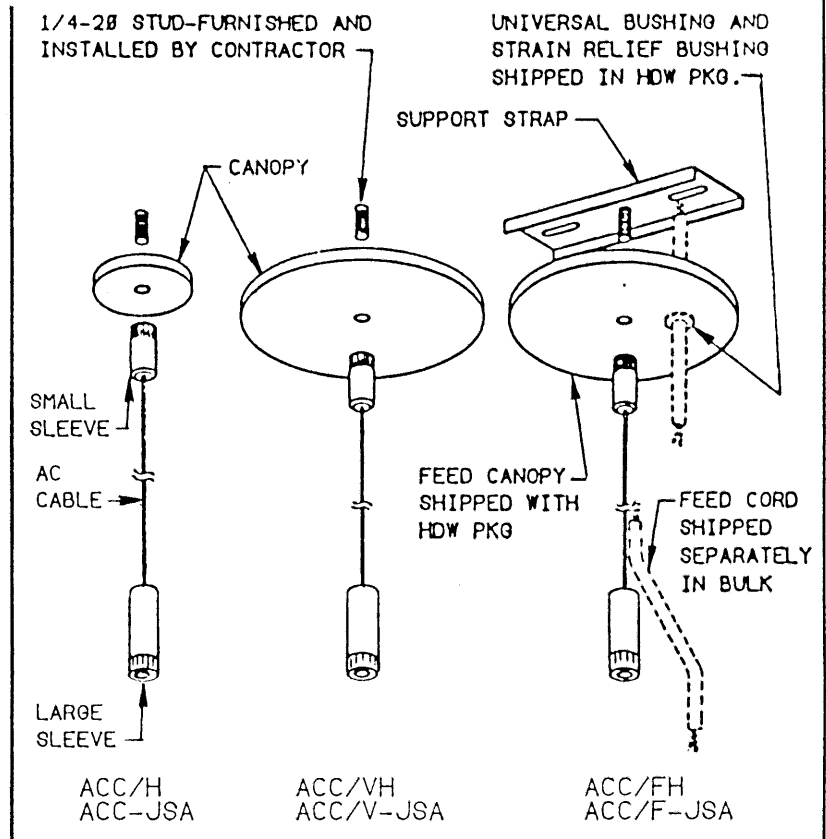
PG. 1
OF 3

DO NOT MODIFY OR ALTER THIS PRODUCT IN ANY WAY, OR INSTALL IN ANY FASHION WHICH IS CONTRARY TO THE INSTRUCTIONS CONTAINED HEREIN.
IF YOU HAVE ANY QUESTIONS REGARDING THIS PRODUCT OR THE INSTALLATION OF IT, PLEASE CALL LITECONTROL ENGINEERING AT 617-294-0100.

GENERAL NOTES:

1. For all aircraft cable assemblies except ACC/FH and ACC/F-JSA (cable assy's w/feed), contractor must securely install one 1/4-20 stud at each cable location, extending 3/4" below ceiling line. See individual fixture sheets for locations of cables. The ACC/FH and ACC/F-JSA assemblies are made to install over the following outlet boxes:
* (3-1/2" Octagon, 4" x 2-1/8" Handy box, 3" x 2" Switchbox and plaster ring with 2-3/4" mounting holes).

WARNING: The National Electric Code requires that any fixture weighing more than (50) pounds be independently supported of an outlet box.



2. Fixtures in rows must be supported by a minimum of one cable (or stem) at the junction of each two fixtures plus one at each end of the row. This is considered by "Underwriters Laboratories" as equivalent to two cables (or stems) per fixture.
3. These fixture supports are to be used only in conjunction with LITECONTROL products for which they were furnished. DO NOT use them for support of any other items or in any fashion which is contrary to this instruction sheet.

INSTALLATION OF AIRCRAFT CABLE ASSEMBLIES TO CEILING: (Refer to view above)

ACC/VH, ACC/V-JSA, ACC/H and ACC-JSA: Place canopy over ceiling stud and screw small sleeve to stud.

*Note: Support straps are also shipped with ACC/VH and ACC/V-JSA assemblies for installation over non-feed outlet boxes. (continued on page 2)

LITECONTROL

100 HAWKS AVENUE - PO BOX 100 - HANSON MA 02341, (617-294-0100)

INSTRUCTIONS (cont).

DO NOT MODIFY OR ALTER THIS PRODUCT IN ANY WAY, OR INSTALL IN ANY FASHION WHICH IS CONTRARY TO THE INSTRUCTIONS CONTAINED HEREIN. IF YOU HAVE ANY QUESTIONS REGARDING THIS PRODUCT OR THE INSTALLATION OF IT, PLEASE CALL LITECONTROL ENGINEERING AT 617-294-0100.

PART NO. **510228-3000**

PG. 2 OF 3

INSTALLATION OF AIRCRAFT CABLE ASSEMBLIES TO CEILING: (cont.)

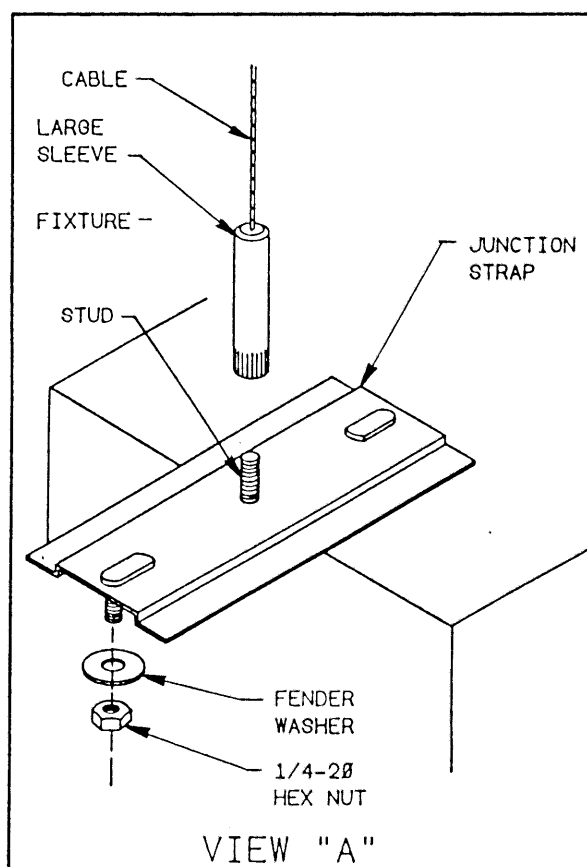
ACC/FH and ACC/F-JSA: Making sure that outlet box is flush with ceiling, mount support strap to outlet box. Make wiring connections at box and let feed cord hang down. Snap universal bushing into canopy and raise canopy to support strap while leading the feed cord thru bushing. Screw cable sleeve onto support strap stud. FOR COIL CORD Installation, it is suggested the universal bushing and feed cord be slid into the canopy before making wiring connections. Coil cord should be wrapped around aircraft cable when installed.

INSTALLATION OF FIXTURES TO AIRCRAFT CABLE:

MOUNTING FIXTURE TYPES P-D,
P-S/D-66N00 & P-D, P-S/D-86N00:

ACC-JSA or ACC/V-JSA (See view "A")

1. Refer to instructions packaged with fixture to prepare it for hanging.
2. Junction strap (JSA) is used to connect two abutting fixtures in a row. Attach junction strap thru 5/16" hole in top of (1) fixture with 1/4-20 nut and fender washer provided, from inside housing.
3. With the first cable or pendant assembly attached to the end of the first fixture in the row per appropriate instructions: Lift fixture up into place and screw large sleeve of cable assy onto stud at center of junction strap.
4. Mount abutting fixture to junction strap in the same manner.
5. Level fixture by turning large sleeve back slightly: 1/4" vertical adjustment is available.



MOUNTING FIXTURE TYPES P-I and
P-ID-66N00, P-I-86N00, P-I-7000:

ACC/H or ACC/VH (See view "B" on pg 3)

1. Refer to instructions packaged with fixture to prepare it for hanging.
 2. Hook (/H) is used to connect two abutting fixtures together in a row.
 3. Thread 1/4-20 hex nut and hook into large sleeve on cable assembly.
- (continued on pg. 3)

LITECONTROL

100 HAWKS AVENUE - PO BOX 100 - HANSON MA 02341, (617-294-0100)

INSTRUCTIONS (cont).

DO NOT MODIFY OR ALTER THIS PRODUCT IN ANY WAY, OR INSTALL IN ANY FASHION WHICH IS CONTRARY TO THE INSTRUCTIONS CONTAINED HEREIN. IF YOU HAVE ANY QUESTIONS REGARDING THIS PRODUCT OR THE INSTALLATION OF IT, PLEASE CALL LITECONTROL ENGINEERING AT 617-294-0100.

PART NO. **510228-3000**

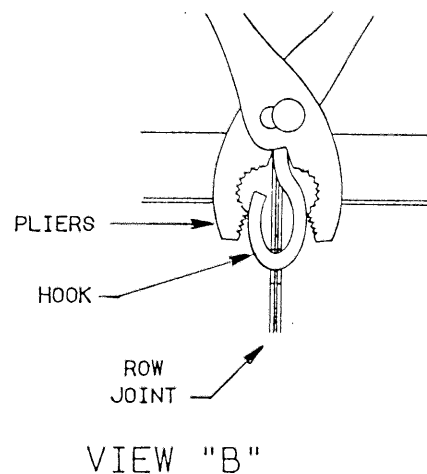
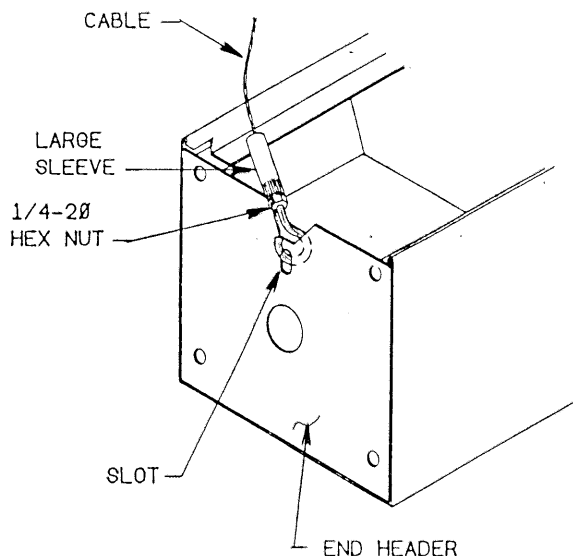
MOUNTING FIXTURE TYPES P-1-and P-ID-66N00,P-1-86N00, P-1-7000 (cont):

4. With the first cable or pendant assembly attached to the end of the first fixture in row per appropriate instructions: Lift fixture up and slip the hook through the slot in the end header at row joint.
5. Lift the abutting fixture onto the same hook and close loop with pliers.
6. Level fixture by loosening hex nut and turning large sleeve up or down: there is approximately 3/4" of adjustment available. Tighten hex nut against sleeve after leveling.

INSTALLATION OF FEED CORD INTO FIXTURE:
(CAT. DESIGNATOR ACC/FH or ACC/F-JSA)

Note: Feed cord is shipped separately in bulk. Bushings and canopy are shipped in hardware package.

1. Run feed cord down aircraft cable and into nearest 5/8" dia. ko. In some cases a 5/8" dia. feed hole will have to be field drilled into fixture wireway.
2. Install strain relief bushing into feed hole. Both straight and right angle strain relief bushings have been provided: use the one which best suits your particular wire routing situation and discard the other.
3. Make wiring connections inside fixture wireway in accordance with the NEC and any local codes.
Note: Some local code enforcement officials may not allow the use of flexible feed cords.
4. Using the nylon tie fasteners provided, secure feed cord to cable every 4-5". Snip off loose ends of the fasteners.



LITECONTROL

100 HAWKS AVENUE - PO BOX 100 - HANSON MA 02341, (617-294-0100)