



Bedlite™ & V³™

available with **3form**®

Bedlite™ and V³ fixtures incorporate 3form® Ecoresin™ material as an option for the fascias. Our 3form fascias allow you to custom select the interlayer or color of material, offering you control over the appearance of the fascia. 3form fascia options are available in addition to the standard fascia choices – Soft Glow Lens (**SGL**) for Bedlite and Perforated (**PFF**) or NonPerforated Steel (**NPFF**) for V³.

LITECONTROL



Litecontrol's 3form fascias consist of a patterned interlayer between two layers of resin. Custom order from a wide array of 3form interlayers and colors to create different looks.

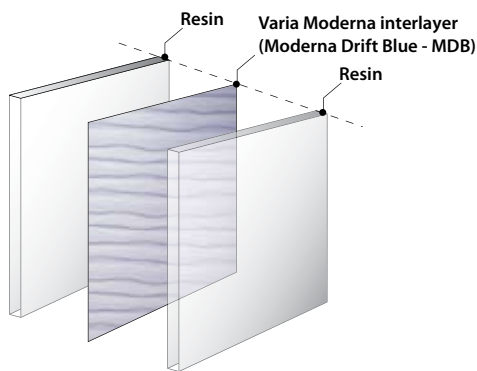
Litecontrol offers two standard 3form fascia options: Drift Blue and Linea Ochre. These are in stock in limited quantities for standard delivery, see below.



Drift Blue (MDB)

Linea Ochre (LO)

Varia Ecoresin



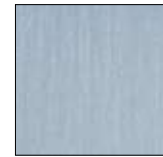
3form employs the Scientific Certification Systems (SCS) to audit and certify its 40% recycled content, and GREENGUARD Indoor Air Quality™ certification verifies ecoresin's low chemical and particulate emissions. These certifications reinforce 3form's and Litecontrol's commitment to green building and the environment. The chemical resistance of the 3form material makes it an excellent choice for healthcare applications, where frequent chemical cleaning is required.

To specify 3form material other than MDB or LO choose from these options:

Varia Moderna



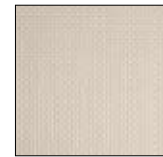
courier



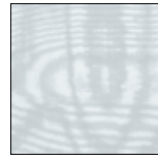
linea azure



linen wheat



quattro khaki



aero plus



drift brown



linea ivory



linen tobacco



quattro olive



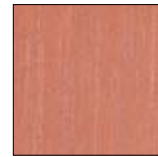
shibuya white



atmosphere stone 2



drift green



linea rose



linen moss



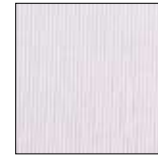
quattro platinum



spider



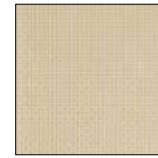
atmosphere thyme 2



eos 2



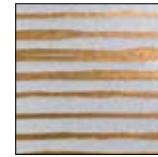
linea vert



quattro amber



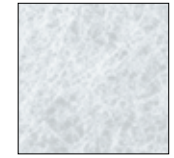
quattro seafoam



tempo copper



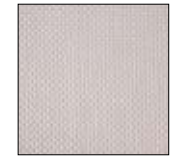
bronze weave



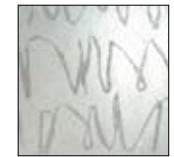
evo white



linen white



quattro carbon



script



tempo ice

Varia Graphics



fern



bulbe



haiku



cirque



jacquard



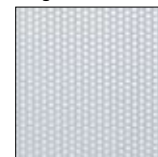
mega dentelle



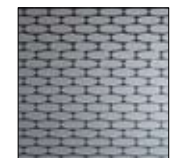
dentelle



mega bulbe



mirco cirque



eclipse



mega cirque



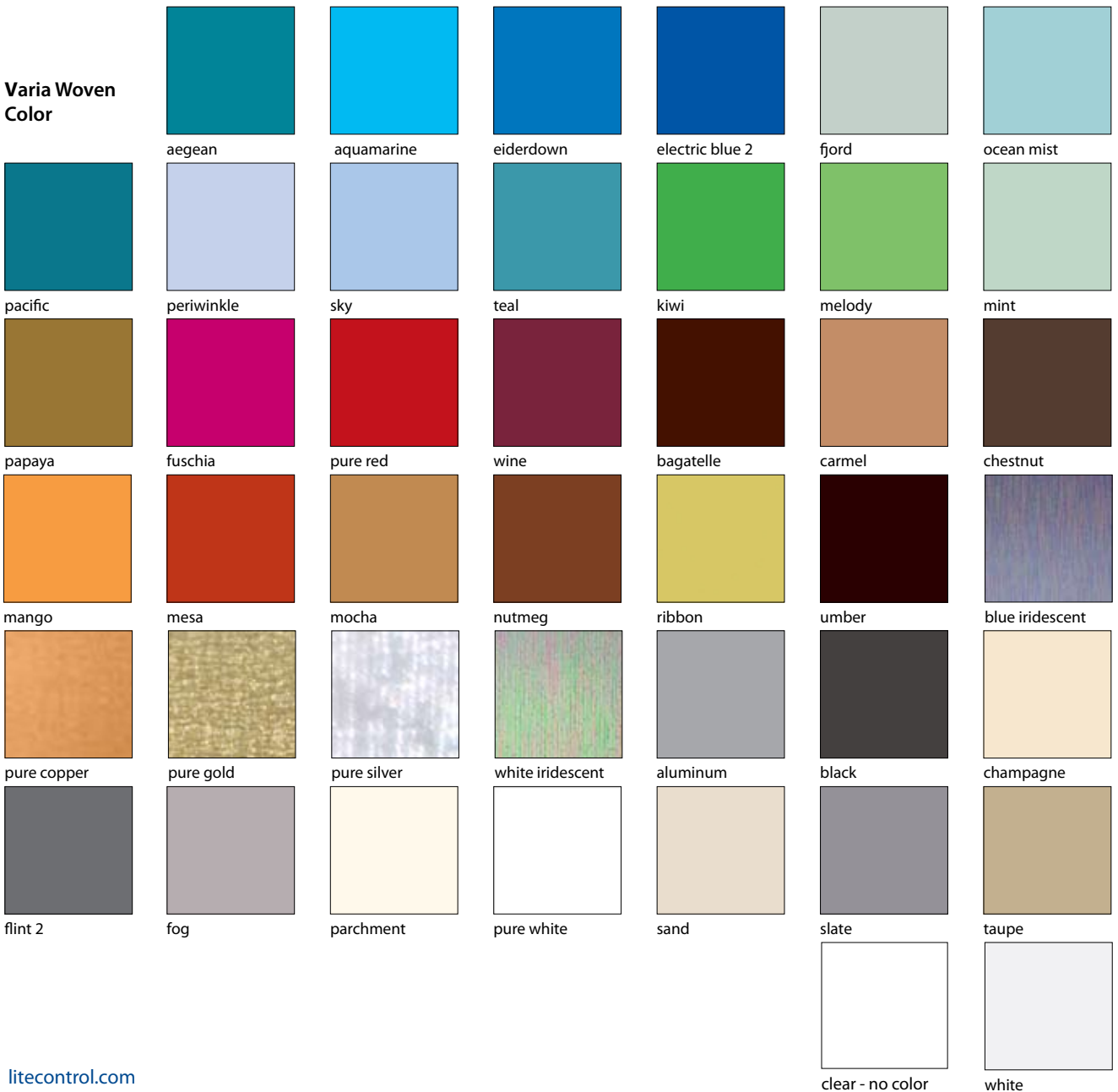
spot

Varia Organics



Note that any Varia Woven Color interlayer may be used alone or combined with a Varia Moderna, Varia Graphics or Varia Organics interlayer.

Varia Woven Color



ordering details

- a. When placing your fixture order add **MDB** (Drift Blue) or **LO** (Linea Ochre) to specify one of the standard 3form fascias. For a custom 3form fascia, add **FXY** (Custom 3form) as the fascia choice to the order code. See the examples below.
- b. When choosing a custom 3form fascia (**FXY**) the following information is needed:
Varia option (Choose from the swatches on page 2 & 3.)
- c. Please note that all 3form fascias are 1/8" thick and provided with a roomside finish texture of super matte for easy cleaning and a lampside finish texture of sandstone. Fascia patterns will run horizontally along fixture.
- d. Limited quantities of the **MDB** and **LO** fascias are in stock for standard delivery. Contact Litecontrol to confirm availability for large orders (more than 20 four-foot fixtures).
- e. For custom 3form fascias (**FXY**) Litecontrol purchases large sheets of 3form material, then cuts and forms the fascias. As a result, orders for custom fascias must meet a minimum of 17 four-foot fixtures for Bedlite and 18 four-foot fixtures for V³. Pricing for custom orders will assume that Litecontrol is providing quantities that are multiples of these minimum orders. Lead times of 12-20 weeks are not uncommon for these custom fascias.
- f. Specific 3form interlayers and colors may be discontinued by 3form at any time. Please check 3form.com to confirm availability, or contact Litecontrol.
- g. Full product details, ordering information and photometric data for Bedlite and V³ are available at litecontrol.com.

example order numbers

Bedlite™ Typical order number with a custom 3form fascia of haiku:

W-AID-1434T8-FXY-CSM-ELB10-2CKT-LVC-120

is a typical catalog number for a 3-lamp (3 lamps in cross-section), 4-foot long, T8 fixture with a **custom 3form fascia** of haiku, end cap with medium silver finish, electronic ballast, lamps switched separately, optional low voltage controller with patient switch to control lamps, 120 volts.

Custom 3form material:

Interlayer: haiku

Color: clear - no color

V³™ Typical order number with standard 3form fascia:

W-AID-3414T5HO-MDB-CWM-LP/ELB-1CWQ-F-120

is a typical catalog number for a 1-lamp (1 lamp in cross-section), 4-foot long, high-output T5 fixture with **3form Moderna Drift Blue** fascia, locked at the indirect/direct position, matte white fixture finish (end caps), low-profile electronic ballast, pre-wired with single-circuit branch wiring and quick-connects, fuse, 120 volts.