

TECHNICAL SPECIFICATIONS

V3

TECHNICAL CONTROL



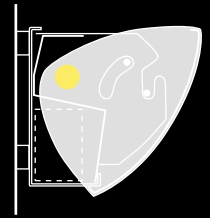
V3

V3 is a new, high-design, adjustable distribution wall valance with a slim, ADA-compliant profile. This new design is perfect for both traditional and contemporary architectural environments where perimeter lighting is appropriate. It is ideal for corridors, small offices, conference rooms, and a variety of public spaces, especially those with low ceilings.

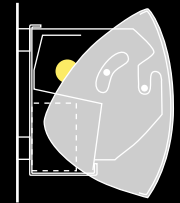
3 position fascia



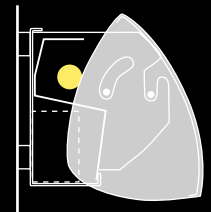
The front fascia can be locked in one of three distribution positions: indirect (AI) for uplighting, indirect/direct (AID) for uplighting and downlighting, and semi-direct (ASD) for primarily downlighting. The V3 design produces a slim ADA-compliant profile in any position.



indirect (AI)
97% up/3% down*



indirect/direct (AID)
74% up/26% down*



semi-direct (ASD)
42% up/58% down*

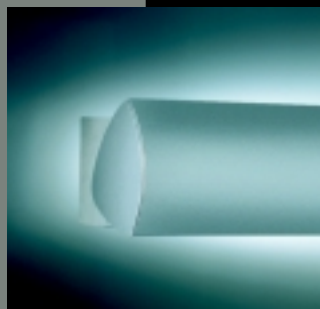
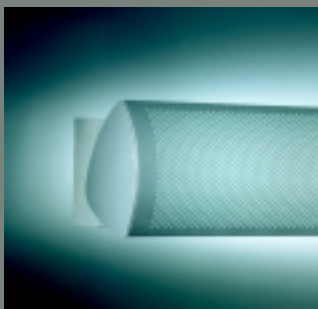
*T5HO lamp, PFF fascia

features

- Three distribution settings
- Two fascia designs (solid and perf)
- Choice of lamps (T5, T5HO, T8)
- ADA compliant for all fascia settings
- Easy single-fastener row mounting
- Die-formed steel housing and fascia

benefits

- Versatility for different applications
- Can blend with wall or provide visual break
- For highest performance or to match job specifications
- Allows choice of mounting height in public areas
- Simple on-site installation (individual or row)
- Durable yet economical



The V3 fascia is available in two styles – solid or perforated. The perforated fascia is designed to blend with the luminance of the wall so that the fixture tends to disappear. The solid fascia appears darker than the wall, providing a horizontal visual break in the wall.

solid and perf

applications

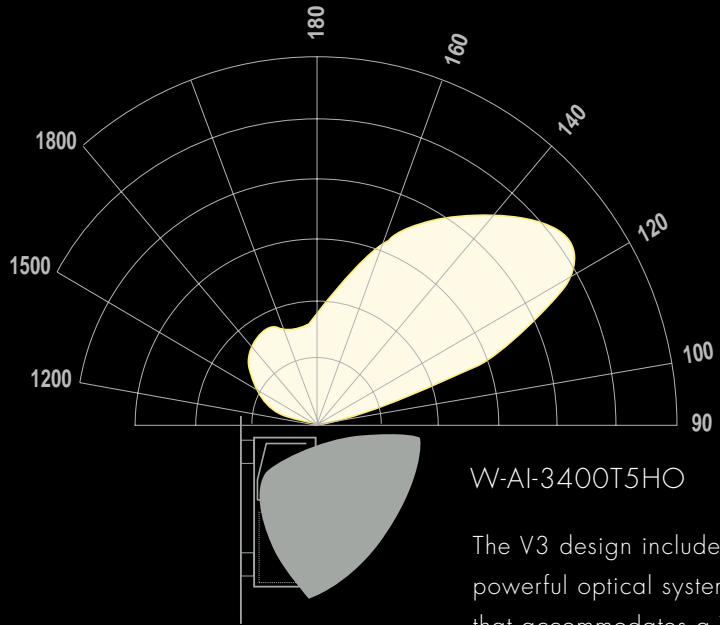
CORRIDOR

two 8' T5HO fixtures in continuous row

30	29	25	22
36	34	28	24
39	37	30	25
41	40	32	26
41	40	32	26
41	40	32	26
39	38	31	25
36	35	29	24
30	29	25	22

Average maintained footcandles at 30"

W-AI-3428T5HO-PFF
 EFFICIENCY: 68%
 CORRIDOR 18' X 8' X 8'
 MOUNTING HEIGHT: 6'-6" AFF
 REFLECTANCES: 80/50/20
 LIGHT LOSS FACTOR: .75
 POWER DENSITY: 1.66 W/ft²
 AVERAGE MAINTAINED fc: 22



W-AI-3400T5HO

The V3 design includes a powerful optical system that accommodates a T5, T5HO or T8 lamp. A Luminance Control Deflector™ (LCD) controls the wall brightness just above the fixture and at fixture joints. The T5HO version offers the latest high performance technology with the highest output and best distribution. T8 lamps can be used in applications requiring the more common lamp type, while still providing excellent performance.

performance

easy installation

The back of the fixture housing includes rubber standoffs for direct mounting to the wall and to accommodate uneven surfaces. Row mounting is accomplished simply with one fastener at each joint, which helps to align the row. A snap-on spline covers the seam between fascias.

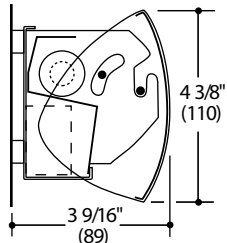
1/8"

5 5/8"

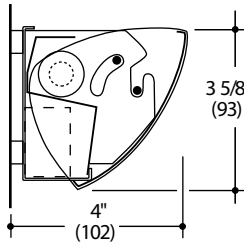


ADA compliant

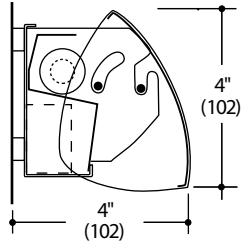
Specifications



Indirect/Direct (W-AID)



Indirect (W-AI)



Semi-Direct (W-ASD)

HOUSING. Die-formed 20-gauge steel. T-slots and knockouts provide for fixture mounting and wiring. End headers incorporate attachment system for 3-position adjustment of fascia and row mounting.

FASCIA*. **Perforated (PFF):** Fascia is die-formed 22-gauge steel with 0.46" diameter holes 0.140" OC, 10% open. White acrylic diffusing panel retained behind. **Non-patterned (NPFF):** Fascia is die-formed 22-gauge steel. Fascia is attached to housing in one of three locked positions: asymmetric indirect (AI), asymmetric indirect/direct (AID), and asymmetric semi-direct (ASD).

REFLECTOR. Reflector is die-formed 20-gauge steel with high-reflectance white finish. Luminance Control Deflector™ (LCD) behind and above lamp is die-formed high-reflectance aluminum.

END CAPS. 14-gauge steel with no holes or knockouts, finished to match fascia.

BALLAST. Low-profile, electronic, high power factor, thermally protected Class P, Sound Rated A, manufactured by a UL Listed manufacturer, as available, determined by Litecontrol. The minimum number of ballasts will be used.

PRE-WIRING. Fixtures are supplied with #12 AWG type THHN wire for branch circuits. One end will have factory installed push-in quick-connects. The other end will be stripped back 1/2" for quick connection in field. For fixtures to accommodate special circuits such as night light and emergency, etc., in-field wiring will be required. See Pre-wiring Information in the Litecontrol Product Guide for further details.

MOUNTING. Housing is mounted directly to the wall with mounting screws. Four push-in rubber standoffs are installed on each 3-foot or 4-foot fixture housing section. Additional rubber standoffs are provided for each additional mounting screw position. Fixtures can be mounted in continuous rows. Spring steel splines are provided at row-joint locations.

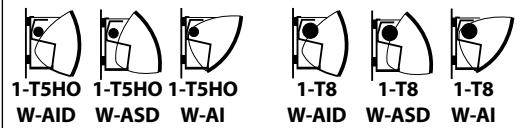
CERTIFICATION. Fixtures and electrical components shall be UL and/or CUL Listed and shall bear the I.B.E.W., A.F. of L. label. **UL LISTED**
Note: Litecontrol reserves the right to change specifications without notice for product development and improvement.

Ordering guide

Product, Lamping, & Length								
W -	AID -	34	1	4	T5HO -			
Mounting	Distribution	Series	Lamp Count	Nominal Length (ft.)	Lamp Type			
W= Wall-Mounted	AID= Indirect/Direct AI= Indirect ASD= Semi-Direct	34	1 → 3	3	T8			
			1 → 4	4				
			2 → 6	6				
			2 → 8	8				
			1 → 3	3		T5HO T5		
			1 → 4	4				
			2 → 6	6				
			2 → 8	8				
						see notes		

Options					
PFF -	CWM -	LP/ELB -	1CWQ -	LP/EF -	120
Fascia Type	Color	Ballast	Pre-Wiring	Option	Volts
PFF NPFF	CWM (Matte White) is standard see LiteColors brochure for other colors	LP/ELB LPD/ELB	1CWQ	LP/EF F see Options	120 277
notes: Lamp Count = the total number of lamps in fixture For Ordering guide information in shaded areas, choose selection by reading ACROSS the shaded areas for correct specifications.					

Cross-section lamping



W-AID-3414T5HO-PFF-CWM-LP/ELB-1CWQ-LP/EF-120 is a typical catalog number for a one-lamp (1 lamp in cross-section), 4-foot long high-output T5 fixture, with perforated fascia locked at the indirect/direct position, painted Matte White, with low-profile electronic ballast, pre-wired with single-circuit branch wiring and quick-connects, with optional low-profile emergency fluorescent ballast, 120 volts.

***NOTE:** On 6' and 8' fixtures, the fascias are mounted as two 3' or 4' segments with the same joining detail at the center as two separate 3' or 4' fixtures. For longer rows, therefore, a consistent pattern of 3' or 4' perf panels can be achieved even when combining 6' and 3' or 8' and 4' fixtures.

Ballast options

LPD/ELB Low-profile dimming ballast. Manufactured by a UL Listed manufacturer. Contact factory for availability.

Options

- F** Fuse. Slow or fast blow available, determined by Litecontrol.
- LP/EF** Emergency fluorescent ballast. Battery-powered ballast from a UL Listed manufacturer will operate one T8, T5, or T5HO lamp for 1 1/2 hours (not available for 3' fixtures). Consult factory for availability.

