

## Arcos™ P-I-5400 Pendant-Mounted Indirect

### Product Description

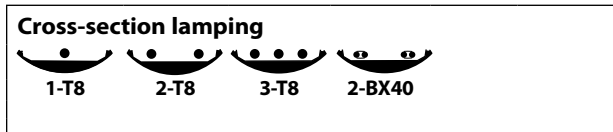
One-piece extruded aluminum arcuate shaped luminaire. UL Listed. Cradle to Cradle Certified™

**CS™** Control Solutions available

### Ordering Guide

Product, lamping, & length						Options						
P -	I -	54	3	4	T8 -	TCWM -	LP/ELB -	TW -	2CWQ -	ECSS -	120	
Mounting	Distribution	Series	Lamp Count	Nominal Length(ft)	Lamp Type	Finish	Ballast	Tandem Wiring	Circuiting	Other Options	Volts	
P Pendant-mounted	I Indirect	54	1, 2, 3 →	4 →	T8	TCWM (textured matte white) is standard  see LiteColors™ for other finishes	LP/ELB is standard  LPD/CS/e LPD/ECO LPD/ELB LPD/MK7  see Ballast Options	→ →	1CWQ	ECS ECSS F LP/EF  see Other Options	120 277	
			2, 4, 6 →	8 →				TW →	2CWQ			
			3, 6, 9 →	12 →				see notes				
			4, 8, 12 →	16 →								
			5, 10, 15 →	20 →								
			6, 12, 18 →	24 →								
			4 →	4 →				BX40				
			8 →	8 →								
			12 →	12 →								
			16 →	16 →								
			20 →	20 →								
			24 →	24 →								
see notes												

**P-I-5434T8-TCWM-LP/ELB-TW-2CWQ-ECSS-120-FAI/ACC** is a typical catalog number for a 3-lamp (3 lamps in cross-section), 4-foot long, T8 fixture with textured matte white finish, low-profile electronic ballast, tandem-wired, pre-wired with two-circuit branch wiring and quick connects, shelf-style end caps, 120 volts, mounted with field adjustable aircraft cables.



### Ballast Options **CS<sub>e</sub>**

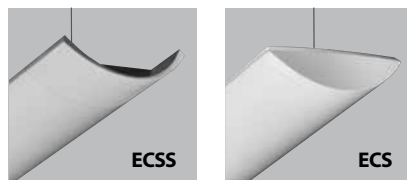
**To have the fixture enabled for Lutron EcoSystem compatibility:**  
**LPD/CS/e** EcoSystem low-profile dimming electronic ballasts installed at the factory, along with all required internal EcoSystem wiring. For other configurations of the Lutron EcoSystem components, including custom device connection feeds to enable connection to ceiling-mounted sensors and control devices, consult [litecontrol.com/cs](http://litecontrol.com/cs) or contact the factory.

Specify in place of **LP/ELB**, contact factory for availability:

- LPD/ECO** Lutron ECO-10 dimming ballast
- LPD/ELB** Low-profile dimming ballast
- LPD/MK7** Advance Mark VII dimming ballast

### Tandem Wiring & Circuiting Options

- 1CWQ** Fixture is wired with a single-circuit so that all lamps are switched together.
- TW-2CWQ** Fixtures wired with two circuits. 2-lamp in cross section fixtures, the fixture is wired such that the in-line lamps are switched separately. 3-lamp in cross section fixtures, the fixture is wired such that the in-line center lamps are switched separately from the in-line outer lamps.



### Other Options

- ECS** End Cap Sculpted. Die-cast sculpted end caps with no exposed fasteners.
- ECSS** End Cap Shelf-Style. Die-cast shelf-style end caps with no exposed fasteners.
- F** Fuse. Slow or fast blow, determined by Litecontrol.
- LP/EF** Low-profile Emergency Fluorescent Ballast. Battery-powered ballast from a UL Listed manufacturer will operate one lamp for 1 1/2 hours.

### Questions to Ask

1. Row information, including desired fixture lengths?
2. Lamp type? 3. White finish or special color? 4. Ballast options?
5. Controls solutions? 6. Other options? 7. 120 or 277 volt? 8. Cables or stems, what length?

Click on  
**Quick Find 54**  
  
litecontrol.com

## Specifications

**HOUSING.** One-piece extruded aluminum, wall thickness .125".

**END CAPS.** Required at each end of row and at both ends of an individual fixture. Flat end caps are standard, of 14-gauge steel with no holes, knockouts, or exposed fasteners. Die-cast sculpted (**ECS**) and "shelf-style" (**ECSS**) end caps are available as options. All end caps finished to match housing.

**REFLECTOR.** Die-formed steel with high-reflectance white finish with areas of specular aluminum.

**LAMPING.** Available in one-, two-, three-lamp T8; two-lamp twin-tube compact fluorescent.

**BALLAST.** Low-profile Electronic Ballast (**LP/ELB**), high power factor, thermally protected Class P, Sound Rated A, manufactured by a UL Listed manufacturer, as available, determined by Litecontrol. Ballasts with a voltage range of 120 to 277 will be used when fixture configuration and ballast availability allow. The minimum number of ballasts will be used.

**TANDEM WIRING.** When selected from Ordering Guide, fixtures wired to switch in-line lamps separately, providing two or three (three-lamp cross-section fixtures only) levels of light.

**CIRCUITING.** Fixtures are supplied with #12 AWG type THHN wire for branch circuits. One end will have factory installed push-in quick-connects. The other end will be stripped back 1/2" for quick connection in field. For fixtures to accommodate special circuits such as night light and emergency, etc., in-field wiring will be required. See Pre-Wiring Information for details.

**BALLAST DISCONNECT.** Fixture supplied with a ballast disconnect device to enable compliance with the NEC.

**ROW JOINING.** Litecontrol's at-joint flat strap supporting two fixtures allows simple fixture joining and installation. Support points are centered above the midpoint of joint "on seam" for aligned, symmetrical appearance. Fixture end headers are threaded in two locations to allow easy row joining without removing reflectors.

**SYSTEM CONNECTORS.** Corners, tees, and crosses available. Connectors are .125" thick extruded aluminum, to be smooth with no exposed fasteners or knockouts. Each system connector shall have a rigid cross-member with a .687" diameter stem hole at center to accept any of Litecontrol's pendant assemblies.

**SUSPENSION.** Aircraft cable or rigid stem pendants attach to fixture using Litecontrol's easy-hang system, with one attachment plate for use at any support point. Standard suspension provided is field adjustable aircraft cable (**FAI/ACC**) with a 51" length cable. See Aircraft Cables and Stems for details.

**CERTIFICATION.** Fixture and electrical components are UL and/or CUL Listed (UL LISTED), and bear the I.B.E.W., A.F. of L. label. This fixture is Cradle to Cradle Certified<sup>CM</sup> Silver by MBDC.

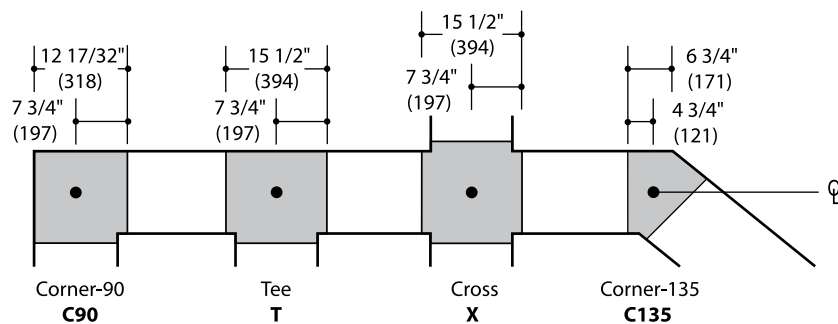
Note: Litecontrol reserves the right to change specifications without notice for product development and improvement.

## System connectors

### Catalog Number

Series	Connector	Finish
P-I-5400	C90	
P-I-5400	C135	
P-I-5400	T	
P-I-5400	X	

**P-I-5400-C90-TCWM** is a typical catalog number for a 90° corner connector finished Textured Matte White.



LITECONTROL

employee owned | customer driven

100 Hawks Avenue Hanson, MA 02341  
781 294 0100 f: 781 293 2849 litecontrol.com



## Planning for installation

### Suspension Assemblies

Provided with P6S (5/8" dia., 3/8" NPT) stems, or 3/32" diameter field adjustable aircraft cables (**FAI/ACC**) in 51" lengths (4' nominal). Stems with 0-45° swivel joints are available. Longer length aircraft cables of 87" and 219" are available upon request. See Stems & Aircraft Cables sheets for further details.

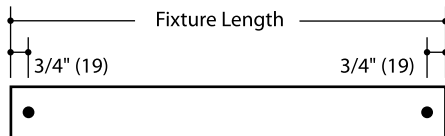
### Stem Lengths

P6S stems are available in eight standard lengths from 6" to 36" (nominal). For Arcos, the actual ceiling-to-top-of-fixture dimensions for each of the standard lengths are: 6", 9", 12", 15", 18", 24", 28", and 36". Refer to Standard Length Stem Assemblies sheet for dimensional information on sloped ceiling (**SC/P6**) and earthquake (**EQ/P6**) stem assemblies.

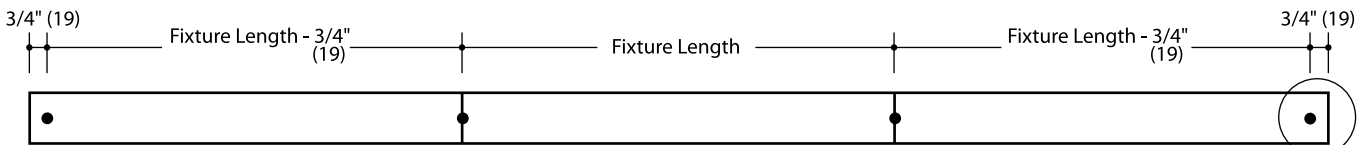
### Suspension Mounting Locations

Pendant locations at ends of rows (or individual fixtures) are 3/4" from fixture end. Pendant locations at in-row joints are at the joint. All pendant types (cable or stem) attach to universal flat strap for mounting either at a fixture end or across two fixtures at a row joint. Strap attachment allows for horizontal adjustment to "fine-tune" side-to-side leveling.

### Individual fixture



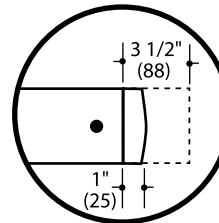
### Row diagram



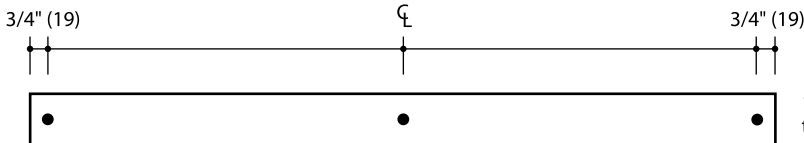
Fixture Lengths: 4'-3", 8'-3", 12'-3",  
16'-6", 20'-6", or 24'-6"  
● Indicates pendant locations

Optional **ECS** (sculpted) end cap adds 1" length to each end of row or individual fixture.

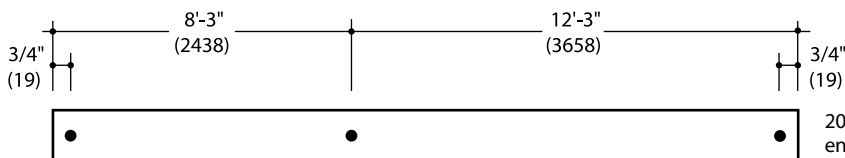
Optional **ECSS** (shelf-style) end cap adds 3 1/2" length to each end of row or individual fixture.



### Additional suspension for fixtures 16' and over



16' 6" and 24' 6" fixtures require an additional mounting location at the centerline (CL) of fixture.

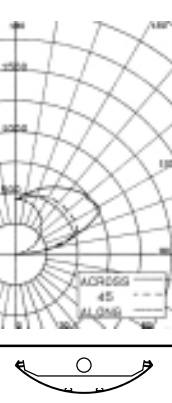


20'-6" fixture requires an additional mounting location 8'-3" from one end (12'-3" from the other end) of the fixture.

Photometric data T8 & BX lamps

Arcos P-I-5400

**CANDLEPOWER SUMMARY**  
0° PLANE PARALLEL TO LAMPS



ANGLE	0	22.5	45	67.5	90	OUTPUT LUMENS
180	448	448	448	448	448	
175	449	450	457	463	468	44
170	443	454	473	482	498	
165	434	455	490	521	532	139
160	420	454	505	550	566	
155	402	450	519	578	599	237
150	381	442	530	604	630	
145	357	432	539	628	660	331
140	328	419	545	650	689	
135	297	401	547	672	718	412
130	264	381	546	687	745	
125	229	360	547	698	755	471
120	192	337	549	709	769	
115	155	312	538	690	705	481
110	119	289	518	568	572	
105	82	263	406	426	439	358
100	49	221	275	304	306	
95	20	117	142	142	139	136
90	2	14	14	12	11	

**P-I-5414T8-LP/ELB 89.8 % Efficiency**  
Litecontrol Certified Test Report #23411000

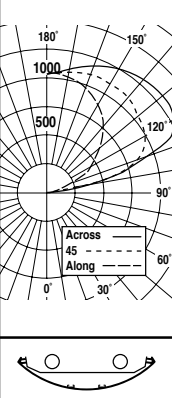
RCC RW	80				70				50				30				10				0
	70	50	30	10	70	50	30	10	50	30	10	50	30	10	50	30	10	0			
RCR																					
0	.86	.86	.86	.86	.73	.73	.73	.73	.50	.50	.50	.29	.29	.29	.09	.09	.09	.00			
1	.78	.74	.71	.68	.66	.63	.61	.58	.43	.42	.40	.25	.24	.24	.08	.08	.08	.00			
2	.71	.64	.59	.55	.60	.55	.51	.48	.38	.35	.33	.22	.21	.19	.07	.07	.06	.00			
3	.64	.57	.51	.46	.55	.49	.44	.40	.33	.30	.28	.19	.18	.17	.06	.06	.05	.00			
4	.59	.50	.43	.39	.50	.43	.38	.33	.29	.26	.24	.17	.15	.14	.05	.05	.05	.00			
5	.54	.43	.38	.33	.46	.38	.33	.28	.26	.23	.20	.15	.13	.12	.05	.04	.04	.00			
6	.49	.39	.33	.28	.42	.34	.28	.24	.23	.20	.17	.14	.12	.10	.04	.04	.03	.00			
7	.45	.35	.29	.24	.38	.30	.25	.21	.21	.17	.15	.12	.10	.09	.04	.03	.03	.00			
8	.42	.32	.25	.21	.35	.27	.22	.18	.19	.15	.13	.11	.09	.08	.04	.03	.03	.00			
9	.39	.28	.22	.18	.33	.25	.19	.16	.17	.14	.11	.10	.08	.07	.03	.03	.02	.00			
10	.36	.26	.20	.16	.31	.22	.17	.14	.16	.12	.10	.09	.07	.06	.03	.02	.02	.00			

Floor Cavity Reflectance .20

**ZONAL LUMEN SUMMARY**

ZONE	LUMENS	% LAMP	% LUMINAIRE
180-90°	2603	89.79	100
90-0°	0	0	0
180-0°	2603	89.79	100

**CANDLEPOWER SUMMARY**  
0° PLANE PARALLEL TO LAMPS



ANGLE	0	22.5	45	67.5	90	OUTPUT LUMENS
180	1032	1032	1032	1032	1032	
175	1039	1041	1046	1046	1052	100
170	1028	1043	1067	1078	1091	
165	1007	1040	1083	1111	1131	305
160	978	1030	1096	1143	1170	
155	940	1012	1104	1176	1211	506
150	892	988	1109	1205	1247	
145	835	955	1105	1224	1272	680
140	772	913	1096	1235	1289	
135	703	866	1077	1241	1307	810
130	627	818	1052	1243	1312	
125	545	763	1025	1229	1300	680
120	461	698	988	1192	1255	
115	372	632	932	1136	1193	856
110	280	566	853	988	967	
105	192	486	673	723	693	613
100	105	385	423	479	451	
95	34	188	182	215	178	191
90	0	0	0	0	0	

**P-I-5424T8-LP/ELB 85.2 % Efficiency**  
Litecontrol Certified Test Report #234210001

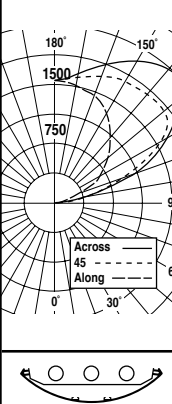
RCC RW	80				70				50				30				10				0
	70	50	30	10	70	50	30	10	50	30	10	50	30	10	50	30	10	0			
RCR																					
0	.81	.81	.81	.81	.69	.69	.69	.69	.47	.47	.47	.27	.27	.27	.09	.09	.09	.00			
1	.74	.70	.67	.65	.63	.60	.58	.56	.41	.40	.38	.24	.23	.22	.08	.07	.07	.00			
2	.67	.61	.57	.53	.57	.53	.49	.45	.36	.34	.32	.21	.20	.19	.07	.06	.06	.00			
3	.61	.54	.48	.44	.52	.46	.42	.38	.32	.29	.27	.18	.17	.16	.06	.05	.05	.00			
4	.56	.47	.41	.37	.47	.41	.36	.32	.28	.25	.22	.16	.15	.13	.05	.05	.04	.00			
5	.51	.42	.36	.31	.43	.36	.31	.27	.25	.22	.19	.14	.13	.11	.05	.04	.04	.00			
6	.47	.37	.31	.27	.40	.32	.27	.20	.20	.17	.14	.12	.10	.08	.04	.03	.03	.00			
7	.43	.33	.27	.23	.37	.29	.24	.20	.20	.17	.14	.12	.10	.08	.04	.03	.03	.00			
8	.40	.30	.24	.20	.34	.26	.21	.17	.18	.15	.12	.10	.09	.07	.03	.03	.02	.00			
9	.37	.27	.21	.17	.31	.23	.19	.15	.16	.13	.11	.09	.08	.06	.03	.03	.02	.00			
10	.34	.25	.19	.15	.29	.21	.17	.13	.15	.12	.09	.09	.07	.06	.03	.02	.02	.00			

Floor Cavity Reflectance .20

**ZONAL LUMEN SUMMARY**

ZONE	LUMENS	% LAMP	% LUMINAIRE
180-90°	4943	85.2	100
90-0°	0	0	0
180-0°	4943	85.2	100

**CANDLEPOWER SUMMARY**  
0° PLANE PARALLEL TO LAMPS



ANGLE	0	22.5	45	67.5	90	OUTPUT LUMENS
180	1506	1506	1506	1506	1506	
175	1515	1515	1534	1532	1548	147
170	1499	1528	1586	1614	1641	
165	1469	1534	1637	1699	1739	460
160	1428	1534	1685	1785	1842	
155	1369	1522	1724	1868	1938	783
150	1298	1498	1754	1944	2031	
145	1217	1464	1777	2012	2113	1086
140	1121	1419	1789	2066	2181	
135	1021	1363	1789	2109	2184	1321
130	912	1299	1777	2017	2047	
125	788	1228	1706	1839	1854	1361
120	669	1147	1525	1622	1615	
115	536	1057	1293	1355	1363	1156
110	403	934	1014	1114	1089	
105	273	711	759	804	768	735
100	151	447	457	482	447	
95	47	197	170	191	157	192
90	0	0	0	0	0	

**P-I-5434T8-LP/ELB 83.2 % Efficiency**  
Litecontrol Certified Test Report #234310001

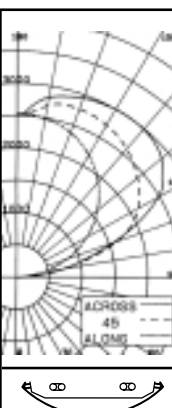
RCC RW	80				70				50				30				10				0
	70	50	30	10	70	50	30	10	50	30	10	50	30	10	50	30	10	0			
RCR																					
0	.79	.79	.79	.79	.68	.68	.68	.68	.46	.46	.46	.27	.27	.27	.08	.08	.08	.00			
1	.72	.69	.66	.63	.61	.59	.56	.54	.40	.39	.38	.23	.22	.22	.07	.07	.07	.00			
2	.66	.60	.55	.51	.56	.51	.48	.44	.35	.33	.31	.20	.19	.18	.07	.06	.06	.00			
3	.60	.53	.47	.43	.51	.45	.41	.37	.31	.28	.26	.18	.16	.15	.06	.05	.05	.00			
4	.54	.46	.40	.36	.46	.40	.35	.31	.27	.24	.22	.16	.14	.13	.05	.05	.04	.00			
5	.50	.41	.35	.30	.42	.35	.30	.26	.24	.21	.19	.14	.12	.11	.05	.04	.04	.00			
6	.46	.36	.30	.26	.39	.31	.26	.23	.22	.18	.16	.13	.11	.09	.04	.04	.03	.00			
7	.42	.33	.27	.22	.36	.28	.23	.19	.19	.16	.14	.11	.10	.08	.04	.03	.03	.00			
8	.39	.29	.23	.19	.33	.25	.20	.17	.17	.14	.12	.10	.08	.07	.03	.03	.02	.00			
9	.36	.27	.21	.17	.31	.23	.18	.15	.16	.13	.11	.09	.08	.06	.03	.02	.02	.00			
10	.33	.24	.19	.15	.28	.21	.16	.13	.14	.11	.09	.08	.07	.06	.03	.02	.02	.00			

Floor Cavity Reflectance .20

**ZONAL LUMEN SUMMARY**

ZONE	LUMENS	% LAMP	% LUMINAIRE
180-90°	7242	83.2	100
90-0°	0	0	0
180-0°	7242	83.2	100

**CANDLEPOWER SUMMARY**  
0° PLANE PARALLEL TO LAMPS



ANGLE	0	22.5	45	67.5	90	OUTPUT LUMENS
180	2528	2528	2528	2528	2528	
175	2522	2524	2564	2626	2662	248
170	2491	2544	2697	2805	2832	
165	2450	2584	2768	2868	2901	770
160	2382	2597	2772	2909	2956	
155	2298	2566	2760	2929	2983	1258
150	2190	2490	2724	2931	3006	
145	2064	2389	2672	2920	3009	1649
140	1927	2270	2601	2891	2995	
135	1767	2123	2512	2844	2957	1900
130	1599	1973	2397	2735	2875	
125	1423	1806	2280	2607	2691	1957
120	1232	1632	2138	2428	2475	
115	1027	1449	1935	2068	2052	1719
110	815	1252	1619	1603	1557	
105	586	1025	1164	1103	1083	1098
100	360	719	711	720	712	
95	155	325	333	306	292	352
90	11	34	26	22	20	

**P-I-5444BX40-LP/ELB 86.9 % Efficiency**  
Litecontrol Certified Test Report #23440000

RCC RW	80				70				50				30				10				0
	70	50	30	10	70	50	30	10	50	30	10	50	30	10	50	30	10	0			
RCR																					
0	.83	.83	.83	.83	.71	.71	.71	.71	.48	.48	.48	.28	.28	.28	.09	.09	.09	.00			
1	.75	.72	.69	.66	.64	.61	.59	.56	.42	.41	.39	.24	.23	.23							