

**INSTALLATION
INSTRUCTIONS**

**PATTERN BOXES
7200**

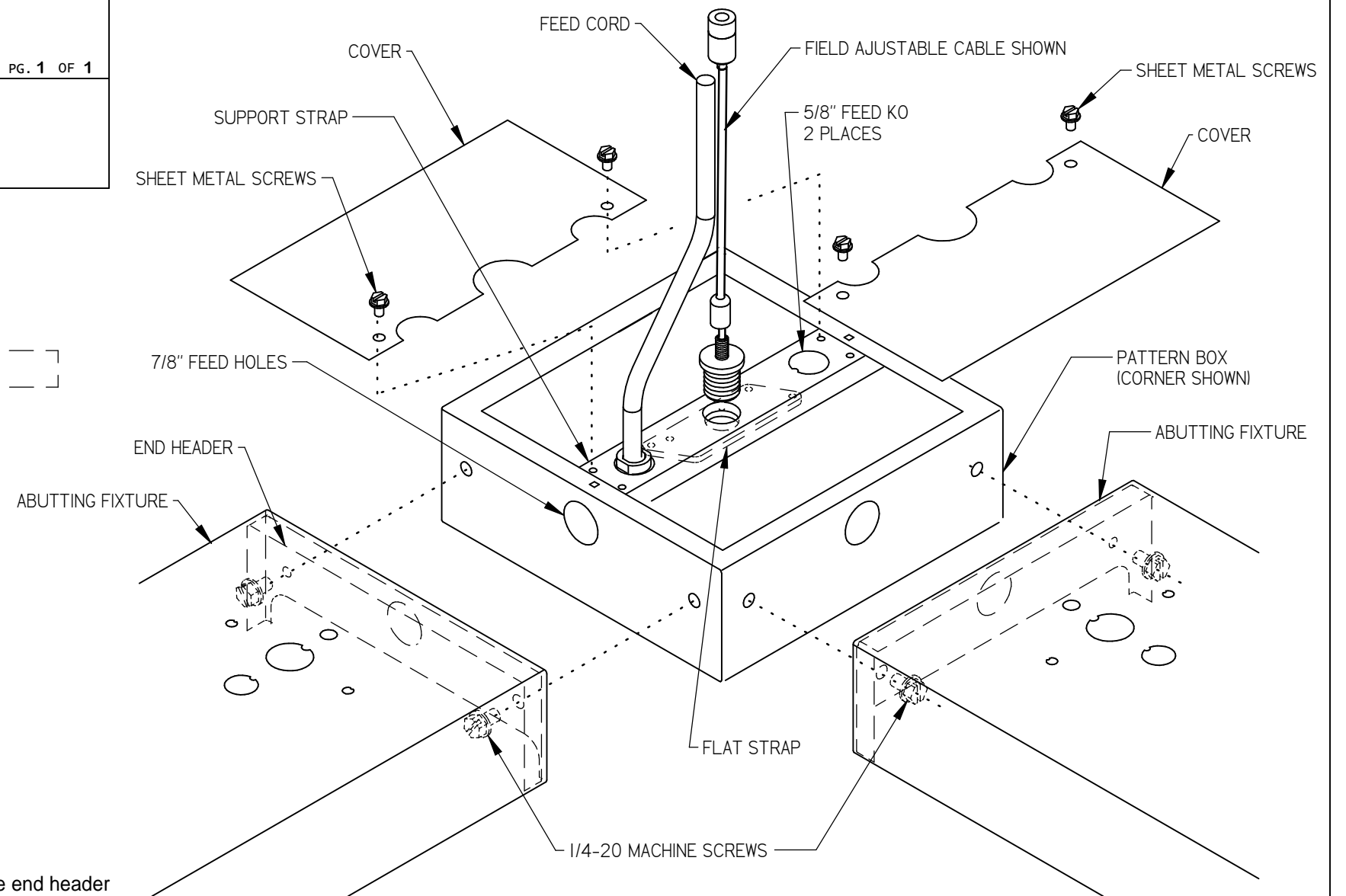
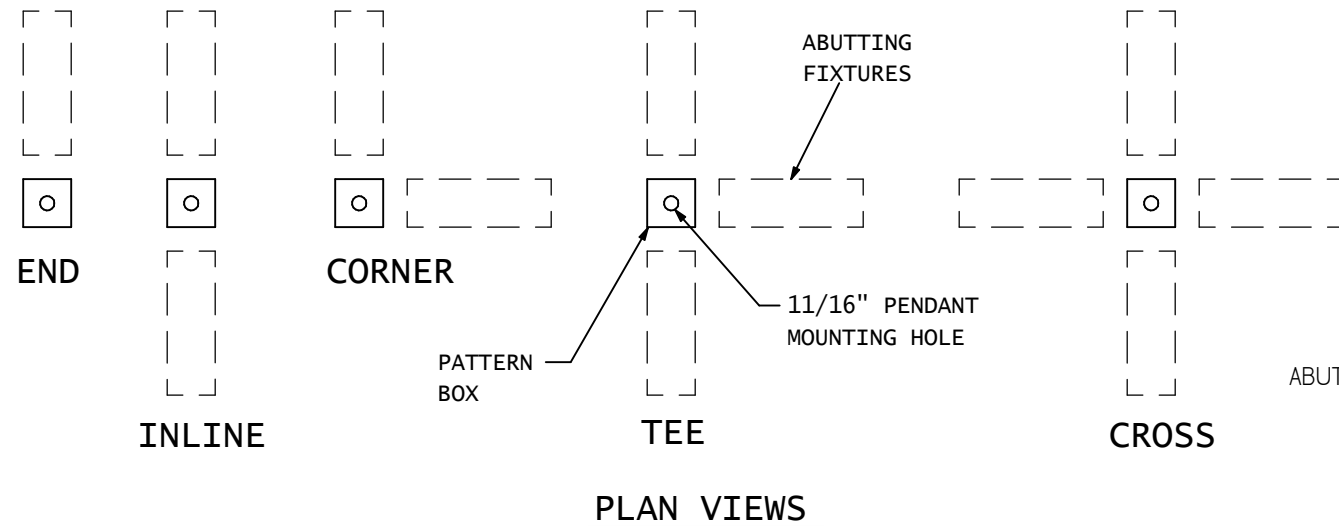
FIXTURE TYPE _____

P/C **510493-0000**

DATE: 7-28-05

PG. 1 OF 1

DO NOT MODIFY OR ALTER THIS PRODUCT IN ANY WAY, OR INSTALL IN ANY FASHION WHICH IS CONTRARY TO THE INSTRUCTIONS CONTAINED HEREIN. IF YOU HAVE ANY QUESTIONS REGARDING THIS PRODUCT OR THE INSTALLATION OF IT, PLEASE CALL LITECONTROL ENGINEERING AT 781-294-0100.



GENERAL NOTES: (READ SHEETS COMPLETELY BEFORE STARTING)

- A) Litecontrol recommends that (1) abutting fixture be mounted to a Pattern Box before attaching to ceiling.
- B) Installation is similar for all types of Pattern Boxes.
- C) Pattern Box Covers and its mounting hardware are shipped loose in same carton.

INSTRUCTIONS:

1. If electrical feed is being brought into Pattern Box, remove a 5/8" KO in support strap. See View .
2. Attach Pattern box to abutting fixture with (2) 1/4-20 machine screws (shipped in polybag) thru holes in fixture end header and into holes in side of Pattern Box. Make sure all sides are flush with fixture before tightening screws.
3. **PENDANT MOUNTING:** (Cables or Stems are shipped separately)
 - A) Position a Flat Strap underneath center hole in Support Strap and thread Cable or stem into Flat Strap.
 - B) Mount another pendant to the opposite end of the abutting fixture per fixture installation instructions.
 - C) Lift fixture/pattern box assembly up and mount pendants to ceiling.
Wire feed may be brought thru 7/8" holes in sides of box into fixture wireway.
 - D) Level assembly up or down by threading stems or cable studs into Flat Straps. Tighten all pendant hardware after leveling.
4. Attach any additional fixtures to the Pattern Box per above steps.
5. Place Pattern Box Covers onto top of Pattern Box and secure with 4 sheet metal screws (shipped in polybag).
6. Clean exterior surfaces with a general window cleaner.