

INSTALLATION INSTRUCTIONS

FAI/ACC, FAI/ACC/F, FAI/ACC/V P-D-0500

FIXTURE TYPE _____

P/C 510445-1000

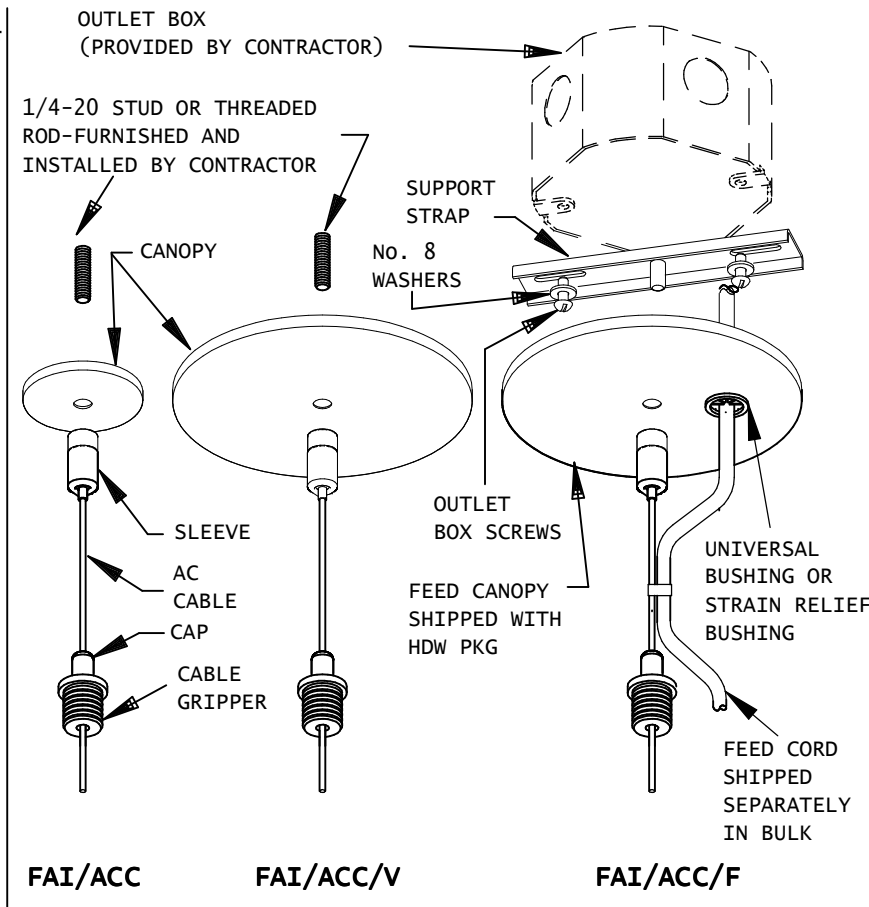
DATE: 9-29-08

PG. 1 OF 1

DO NOT MODIFY OR ALTER THIS PRODUCT IN ANY WAY, OR INSTALL IN ANY FASHION WHICH IS CONTRARY TO THE INSTRUCTIONS CONTAINED HEREIN. IF YOU HAVE ANY QUESTIONS REGARDING THIS PRODUCT OR THE INSTALLATION OF IT, PLEASE CALL LITECONTROL ENGINEERING AT 781-294-0100.

GENERAL NOTES:

- For all aircraft cable assemblies except FAI/ACC/F (cable assy with feed), the contractor must securely install one 1/4-20 stud at each aircraft cable location, extending 3/4" below ceiling line. See individual fixture instruction sheet for locations of cable.
The FAI/ACC/F assembly is made to install over the following outlet boxes*: (3-1/2" Octagon, 4" x 2-1/8" Handy box, 3" x 2" switchbox and and plaster ring with 2-3/4" mounting holes).
- Fixtures in rows must be supported by a minimum one cable (or stem) at the junction of each two fixtures plus one at each end of the row. This is considered by "Underwriters Laboratories" as equivalent to two cables per fixture.
- These fixture supports are to be used only in conjunction with LITECONTROL products for which they were furnished. DO NOT use them for support of any other items or in any fashion which is contrary to this instruction sheet.

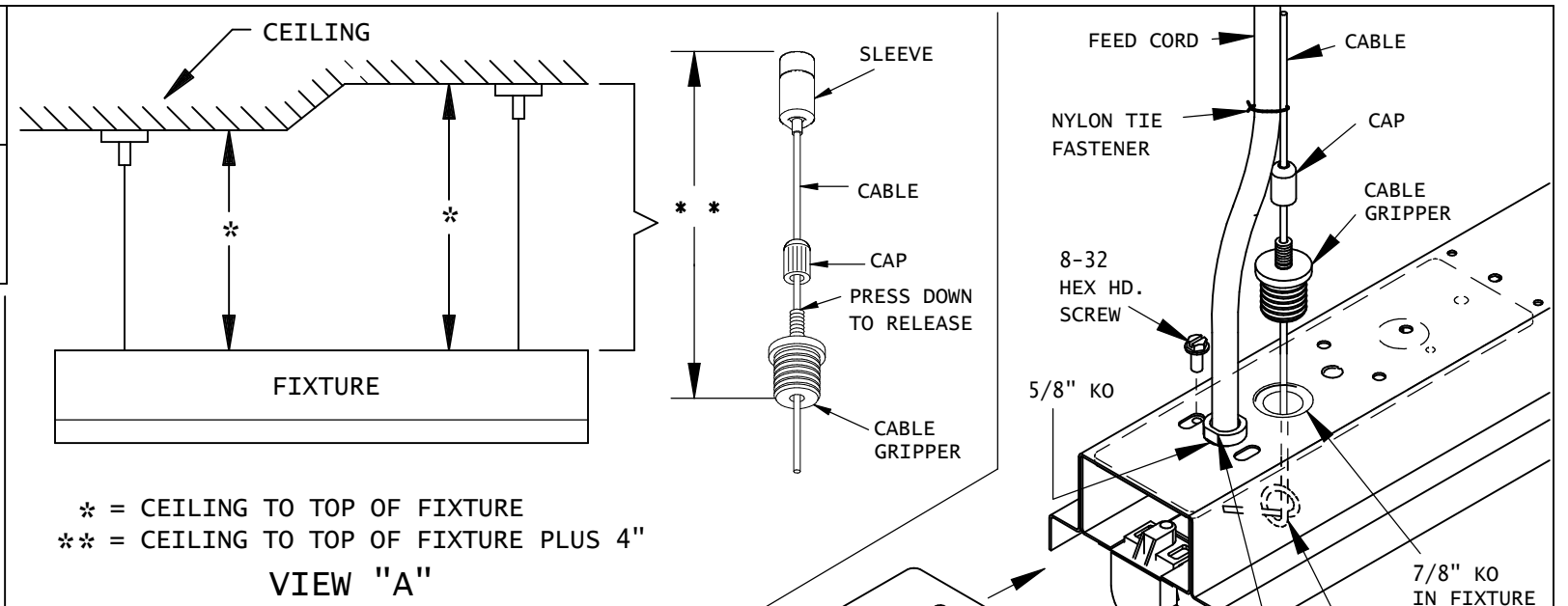


- Cable assemblies and Feed Cord are bulk packed and assembled as shown in view above. Cables are provided in (3) lengths for ceiling to fixture heights of 6"-48", 6"-84" and 6"-216".
* Note: Support straps are also shipped with FAI/ACC/V assemblies for installation over non-feed outlet boxes.

PREPARATION OF CABLE ASSEMBLY:

- Unscrew cap from cable gripper as shown in View "A".
- Determine the distance from the ceiling to the top of the fixture and add 4" as shown in View "A", This is an approximate ceiling to fixture distance, final adjustment will be made after fixtures are hung. Slide gripper to length **, by pressing down on the spring loaded top as shown. DO NOT screw cap back on at this time.

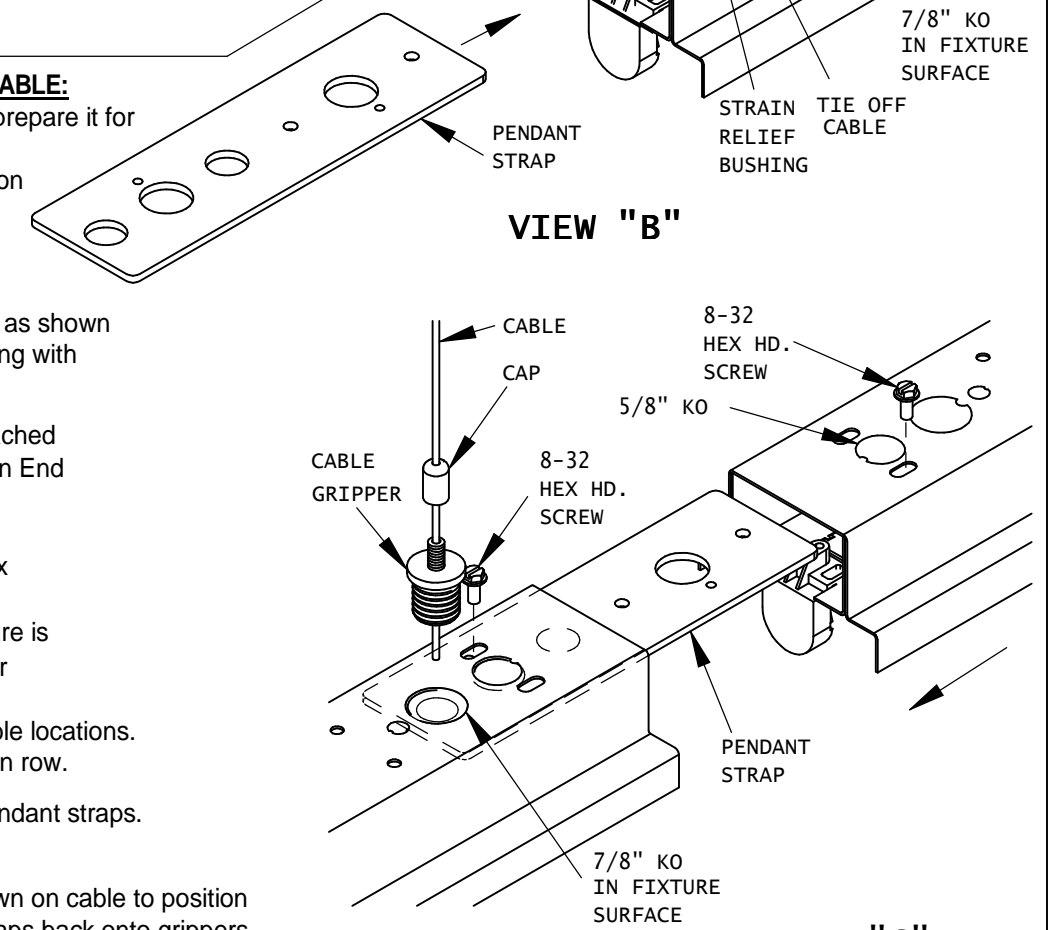
- INSTALLATION OF AIRCRAFT CABLE ASSEMBLIES TO CEILING:** Refer to the view above.
FAI/ACC and FAI/ACC/V: Place canopy over ceiling stud and screw sleeve to stud.
FAI/ACC/F: Making sure that outlet box is flush with ceiling, mount support strap to outlet box with outlet box screws and #8 washers. Make Wiring connections at box and let feed cord hang down. Press universal bushing into canopy and raise canopy to support strap while leading feed cord thru bushing. Screw cable sleeve onto support strap stud making sure that canopy is up against ceiling.



2. INSTALLATION OF FIXTURES TO AIRCRAFT CABLE:

Refer to instructions packaged with fixture to prepare it for hanging. Remove 7/8 KO in fixture at each cable location and remove the 5/8" KO at feed location as shown in View "B".

- INDIVIDUALLY MOUNTED FIXTURES:** Slide Pendant strap into both ends of fixture as shown in View "B" and attach to underside of housing with with one # 8-32 hex head machine screw.
- ROW OF FIXTURES:** A Pendant strap is attached to the fixture at the end of the row (where an End Cap is located) per step A above. At row joint end of this fixture, another Pendant strap is attached with (1) #8-32 hex head screw and positioned so that half of it extends out from the end. The abutting fixture is slid onto this strap and secured with another #8-32 screw. See View "C".
Note: remove the 7/8" knockouts only at cable locations. Repeat this step for each additional fixture in row.



- Lift fixture up and screw cable gripper into Pendant straps. Tighten grippers.
- While holding fixture, adjust gripper up or down on cable to position and level fixture in its final location. Thread caps back onto grippers.
- Tie a knot in cables 2-3" from inside of fixture and trim off any excess cable. (Use a tool such as locking pliers to tighten knot).

6. INSTALLATION OF FEED CORD INTO FIXTURE: (CATALOG DESIGNATOR "FAI/ACC/F")

- Note: Feed cord is shipped separately in bulk. Bushings and canopy are shipped in hardware package.
- Run feed cord down along the aircraft cable and insert into the 5/8" knockout with a strain relief bushing. Both straight and right angle strain relief bushings have been provided. Use the one that best suits your wire routing situation and discard the other.
 - Make wiring connections inside fixture wireway in accordance with the NEC and all local codes.
 - Using the nylon tie fasteners provided, secure feed cord to cable every 4-5". Snip off loose ends of the fasteners.