

SAE Systems

P-ID-9700 & LS-P-ID-9700
Pendant-Mounted Indirect

Product Description

Indirect-direct fixture with curved baffles to match the housing shape. UL listed. Cradle to Cradle Certified.^{CM}

Ordering Guide

Product, Lamping, & Length

P -	ID -	97	6	8	T8 -
Mounting	Distribution	Series	Lamp Count	Nominal Length (ft)	Lamp Type
P Pendant-mounted LS-P LiteSpeed Pendant-mounted	ID Indirect/ Direct	97	2, 3 → 4, 6 → 6, 9 →	4 8 12	T8
Mounting Options - add to end of catalog number Aircraft cables <input type="checkbox"/> FAI/ACC (field adjustable) <input checked="" type="checkbox"/> standard Stems <input type="checkbox"/> P6S (stem) <input type="checkbox"/> SC/P6 (sloped ceiling) <input type="checkbox"/> EQ/P6 (earthquake)			see notes		

Options

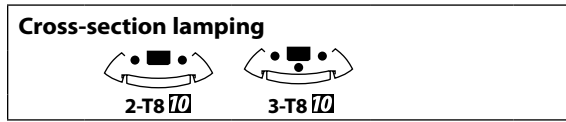
BW -	TCWM -	ELB10 -	TW -	2CWQ -	F -	120
Baffle	Finish	Ballast	Tandem-Wiring	Circuiting	Other Options	Volts
BA BW PBSS*	TCWM (textured matte white) is standard see LiteColors™ for other finishes	ELB10 is standard ELB/HLO DA/MK7 DL/ECO DO/HEL LPD/CS/e see Ballast Options	-- TW	1CWQ 2CWQ	EF F PFCV see Other Options	120 277
see Baffle Options						

notes:
Lamp count = total number of lamps in the fixture
*PBSS baffle only available with 2-lamp cross-section
For ordering guide information in shaded areas, choose selection by reading ACROSS the shaded areas for correct specifications.

P-ID-9768T8-BW-TCWM-ELB10-TW-2CWQ-F-120-FAI/ACC is a typical catalog number for a 6-lamp (3 lamps in cross-section), 8-foot long T8 fixture with matte white blade baffle, textured matte white finish, electronic ballast, tandem-wired, pre-wired with two-circuit branch wiring and quick-connects, fuse, 120 volts, mounted with field adjustable aircraft cables.

10 DAY LiteSpeed Quick-Ship

Many configurations of this fixture are available in our Litespeed 10-day quick-ship program. The "10-day" icon in the descriptions below shows which options are available in Litespeed. Litespeed orders are shipped within 10 working days of receipt of a released, cleared order. An "LS" prefix is required in front of the ordering number to have the order handled as Litespeed. Other configurations not indicated here may be available for 10-day shipment; contact Customer Service for availability. Some restrictions may apply to large orders. All Litespeed fixtures are supplied in textured white finish (TCWM).



Tandem Wiring & Circuiting Options

1CWQ Fixture is wired with a single-circuit so that all lamps are switched together.

TW-2CWQ Fixtures wired with two circuits. 2-lamp in cross section fixtures, the fixture is wired such that the inline lamps are switched separately. 3-lamp in cross section fixtures, the fixture is wired such that the inline center lamps are switched separately from the inline outer lamps.

Other Options

- EF** Emergency Fluorescent Ballast. Battery-powered ballast from a UL Listed manufacturer will operate one T8 lamp for 1 1/2 hours.
- F** Fuse. Slow or fast blow, determined by Litecontrol.
- PFCV** Perforated Top Cover. Finished in high reflectance matte white. Can be added or removed in field. Provides approximately 20% indirect, 80% direct distribution for 2-lamp cross-section fixtures.

Baffle Options

- BA** Blade Baffle, Matte Aluminum Gray.
- BW** Blade Baffle, Matte White. One-piece, 4" long, 20-gauge steel baffle. Radiused blades are 1" high, 2" OC, providing a 27° shielding angle. The 2" blade spacing is continuous and uninterrupted along length of rows of joined fixtures.
- PBSS** Parabolic Semi-specular Baffle. Available only with 2-lamp cross-section. Die-formed .016" thick semi-specular, low iridescence anodized aluminum baffles, blades are .75" high, 2" OC.

Ballast Options

- Specify in place of **ELB10**, contact factory for availability/compatibility with lamping:
- ELB/HLO** Electronic high light output ballast
 - DA/MK7** Advance Mark VII dimming ballast
 - DL/ECO** Lutron ECO-10 dimming ballast
 - DO/HEL** Osram Sylvania dimming ballast

To have the fixture enabled for Lutron EcoSystem compatibility:
LPD/CS/e EcoSystem low-profile dimming electronic ballasts installed at the factory, along with all required internal EcoSystem wiring. For other configurations of the Lutron EcoSystem components, including custom device connection feeds to enable connection to ceiling-mounted sensors and control devices, consult litecontrol.com/cs or contact the factory.

Questions to Ask

1. Row information, including desired fixture lengths? 2. Lamp type?
3. Baffle type? 4. White finish or special color?
5. Ballast options? 6. Tandem wiring? 7. Controls solutions?
8. Other options? 9. 120 or 277 volt? 10. Cables or stems, what length?

Click on **Quick Find 97**

litecontrol.com

Specifications

HOUSING. Die-formed and welded steel. Knockouts of .875" diameter are spaced 3" OC to provide easy alignment of support points with existing or special pendant location requirements. Wiring channel cover snaps on/off without tools for easy access to ballast and wiring. End headers are threaded in two locations for easy row mounting with no special tools.

BAFFLE. Installed and removed by "lift-and-shift" method, supported on either side rail along housing. A stainless steel safety tether is provided at each end to maintain positive attachment to housing. Lamps may be removed/replaced from above without any handling of baffle.

END CAPS. Steel, 14-gauge, with no holes or knockouts, finished to match housing.

LAMPING. Available in two- and three-lamp T8 cross-sections

BALLAST. Electronic Ballast (ELB), high power factor, thermally protected Class P, Sound Rated A, less than 10% THD manufactured by a UL Listed manufacturer, as available, determined by Litecontrol. Ballasts with a voltage range of 120 to 277 will be used when fixture configuration and ballast availability allow. The minimum number of ballasts will be used.

TANDEM WIRING. When selected from Ordering guide below, fixtures wired to switch in-line lamps separately, providing two or three (three-lamp cross-section fixtures only) levels of light.

CIRCUITING. Fixtures are supplied with #12 AWG type THHN wire for branch circuits. One end will have factory-installed push-in quick-connects. The other end will be stripped back 1/2" for quick connection in field. For fixtures to accommodate special circuits such as night light and emergency, etc., in-field wiring will be required. See Pre-Wiring Information for details.

BALLAST DISCONNECT. Fixture supplied with a ballast disconnect device to enable compliance with the NEC.

ROW JOINING. Fixture end headers are threaded in two locations to allow easy row joining without removing ballast cover. Splines are provided for precise alignment of housings at fixture joints.

SUSPENSION. Aircraft cable or rigid stem pendants attach to fixture housing. Suspension points may be spaced according to fixture housing length, including up to 12 feet apart with 12' fixtures. FAI/ACC field adjustable 51" is standard. See Aircraft Cables and Stems for details.

CERTIFICATION. Fixture and electrical components are UL and/or CUL Listed  and bear the I.B.E.W., A.F. of L. label. This fixture is Cradle to Cradle Certified^{CM} Silver by MBDC. Note: Litecontrol reserves the right to change specifications without notice for product development and improvement.

Planning for installation

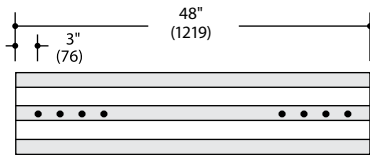
Suspension assemblies

Provided with 3/32" diameter field-adjustable aircraft cables (FAI/ACC) in 51" lengths (4' nominal). Lengths of 87" and 219" are available upon request. Fixed length cable assemblies (with 1/4 - 20 stud adjustment for leveling purposes) are also available as an option in nominal lengths of 9", 12", 18", 24" and 36". Refer to Aircraft Cables sheet for further details.

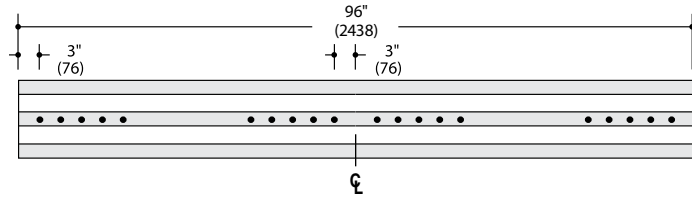
Stem lengths

P6S stems are available in five fixed lengths: 9", 12", 18", 24", and 36". Stems with 0-45° swivel joints are also available as Sloped Ceiling (SC/P6) and Earthquake (EQ/P6) assemblies. Refer to Stems sheet for further details.

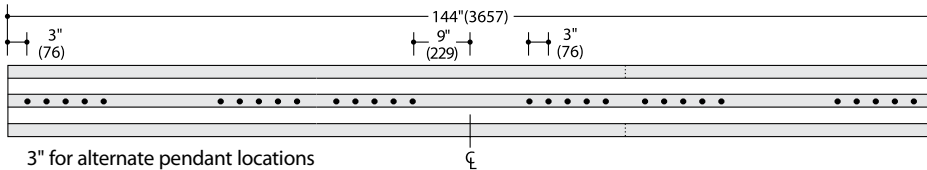
4' Fixture



8' Fixture

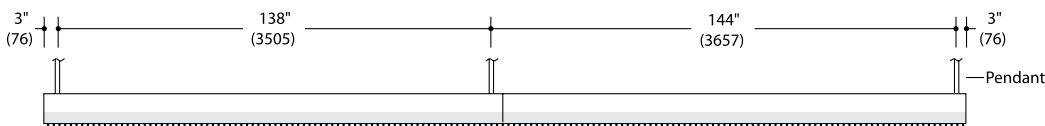


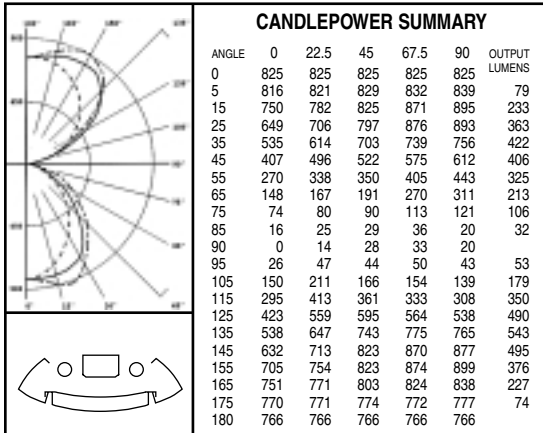
12' Fixture



Fixture Lengths: 4', 8', 12'
• Indicates .875" knockout locations.

Row mounting: example for a 24' row; with two 12' fixtures and 3 suspension points.



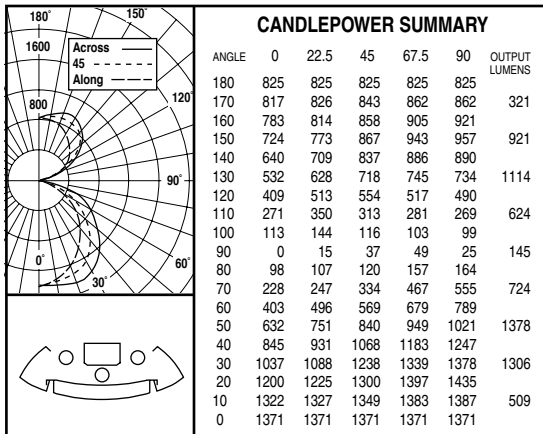


		P-ID-9724T8-BW 85.6 % Efficiency																	
		ITL Certified Test Report #ITL46907																	
RCC		80				70				50			30			10		0	
RW		70	50	30	10	70	50	30	10	50	30	10	50	30	10	50	30	10	0
RCR	0	.90	.90	.90	.90	.83	.83	.83	.83	.68	.68	.68	.55	.55	.55	.43	.43	.43	.38
	1	.83	.79	.76	.73	.76	.73	.70	.67	.60	.58	.57	.49	.48	.46	.39	.38	.37	.32
	2	.76	.69	.64	.60	.69	.64	.59	.56	.53	.50	.47	.43	.41	.39	.34	.33	.31	.27
	3	.69	.61	.55	.50	.63	.56	.51	.47	.47	.43	.40	.38	.36	.33	.30	.29	.27	.23
	4	.63	.54	.48	.43	.58	.50	.44	.40	.42	.37	.34	.34	.31	.29	.27	.25	.23	.20
	5	.58	.48	.41	.36	.53	.45	.39	.34	.37	.33	.29	.31	.27	.25	.25	.22	.20	.18
	6	.53	.43	.37	.32	.49	.40	.34	.30	.34	.29	.26	.28	.24	.22	.22	.20	.18	.15
	7	.49	.39	.32	.28	.45	.36	.30	.26	.31	.26	.23	.25	.22	.19	.20	.18	.16	.14
	8	.46	.35	.29	.24	.42	.33	.27	.23	.28	.23	.20	.23	.20	.17	.19	.16	.14	.12
	9	.43	.32	.26	.22	.39	.30	.24	.20	.26	.21	.18	.21	.18	.15	.17	.15	.13	.11
	10	.40	.30	.24	.20	.36	.28	.22	.18	.23	.19	.16	.20	.16	.14	.16	.14	.12	.10

Floor Cavity Reflectance 20

ZONAL LUMEN SUMMARY			
ZONE	LUMENS	% LAMP	% LUMINAIRE
0-30°	676	11.6	13.6
0-40°	1097	18.9	22.1
0-60°	1828	31.5	36.8
0-90°	2179	37.6	43.9
90-120°	582	10.0	11.7
90-130°	1072	18.5	21.6
90-150°	2110	36.4	42.5
90-180°	2786	48.0	56.1
0-180°	4965	85.6	100.0

LUMINANCE SUMMARY (fL)			
ANGLE	0°	45°	90°
45°	2283	2929	3434
55°	1867	2421	3064
65°	1389	1793	2320
75°	1134	1379	1855
85°	728	1169	659



		P-ID-9734T8-BW-ELB 80.8 % Efficiency																	
		Litecontrol Certified Test Report #24231300																	
RCC		80				70				50			30			10		0	
RW		70	50	30	10	70	50	30	10	50	30	10	50	30	10	50	30	10	0
RCR	0	.88	.88	.88	.88	.82	.82	.82	.82	.70	.70	.70	.60	.60	.60	.50	.50	.50	.46
	1	.81	.77	.74	.71	.75	.72	.69	.67	.62	.60	.58	.53	.52	.51	.45	.44	.43	.39
	2	.73	.68	.63	.59	.68	.63	.59	.55	.55	.52	.49	.47	.45	.43	.40	.38	.37	.33
	3	.67	.60	.54	.49	.62	.56	.51	.47	.49	.45	.42	.42	.39	.36	.36	.34	.32	.29
	4	.62	.53	.47	.42	.57	.50	.44	.40	.43	.39	.35	.37	.34	.31	.32	.29	.27	.25
	5	.56	.47	.40	.35	.52	.44	.38	.34	.38	.34	.30	.33	.30	.27	.28	.26	.23	.21
	6	.52	.42	.35	.31	.48	.39	.33	.29	.34	.30	.26	.30	.26	.23	.26	.23	.20	.18
	7	.48	.38	.31	.27	.44	.35	.29	.25	.31	.26	.23	.27	.23	.20	.23	.20	.18	.16
	8	.44	.34	.27	.23	.41	.32	.26	.22	.28	.23	.20	.24	.20	.17	.21	.18	.15	.14
	9	.40	.30	.24	.20	.38	.28	.23	.19	.25	.20	.17	.22	.18	.15	.19	.16	.13	.12
	10	.37	.28	.21	.17	.35	.26	.20	.17	.23	.18	.15	.20	.16	.13	.17	.14	.12	.10

Floor Cavity Reflectance 20

ZONAL LUMEN SUMMARY			
ZONE	LUMENS	% LAMP	% LUMINAIRE
180-90°	3044	34.99	43.29
90-0°	3987	45.83	56.71
180-0°	7031	80.83	100.00

LUMINANCE SUMMARY (fL)			
ANGLE	0°	45°	90°
45°	1240	1607	1927
55°	1072	1464	1816
65°	822	1209	1981
75°	737	998	1631
85°	595	840	733