

**INSTALLATION
INSTRUCTIONS**

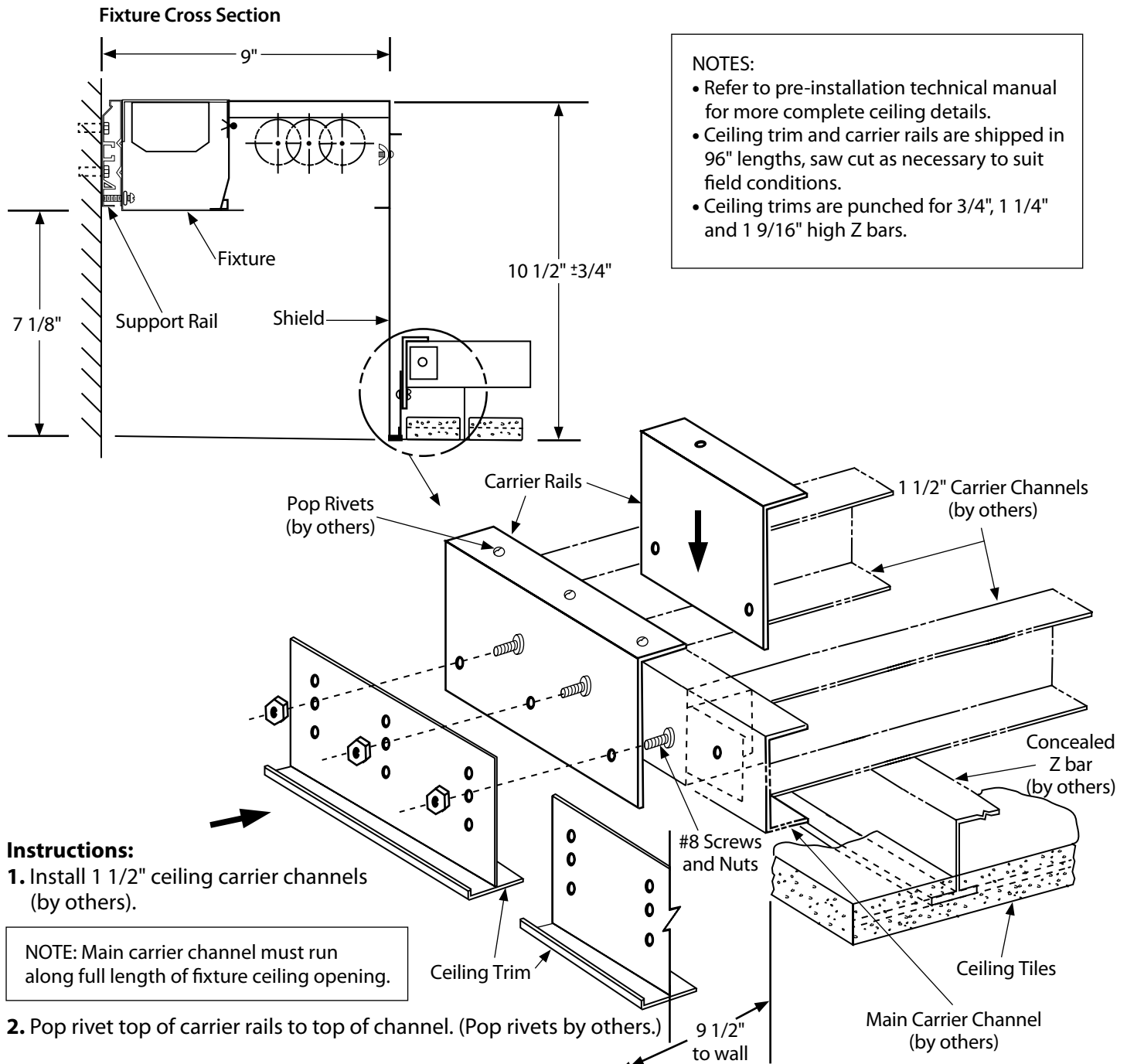
P/C 510165 2000

Fixture Type

Wall/Slot 85N

**Concealed Z bar
Ceiling Trim**

Do not modify or alter this product in any way, or install in any fashion which is contrary to the instructions contained herein.
If you have any questions regarding this product or the installation of it, please call Litecontrol Engineering at 781 294 0100.



NOTES:

- Refer to pre-installation technical manual for more complete ceiling details.
- Ceiling trim and carrier rails are shipped in 96" lengths, saw cut as necessary to suit field conditions.
- Ceiling trims are punched for 3/4", 1 1/4" and 1 9/16" high Z bars.

Instructions:

1. Install 1 1/2" ceiling carrier channels (by others).

NOTE: Main carrier channel must run along full length of fixture ceiling opening.

- 2.** Pop rivet top of carrier rails to top of channel. (Pop rivets by others.)
- 3. a.** Attach ceiling trims to carrier rails with #8 screws and nuts.
b. Bolt thru top set of holes in ceiling trim for 1 9/16" high Z bars.
c. Bolt thru middle set of holes in ceiling trim for 1 1/4" high Z bars.
d. Bolt thru bottom set of holes in ceiling trim for 3/4" high Z bars.

4. Mitre cut and butt ceiling trims at corners.