

INSTALLATION
INSTRUCTIONS

FIXTURE TYPE _____

P-I-9800, P-S/I-9800
P-I-98PF00 FIXTURE

P/C 510354-6000

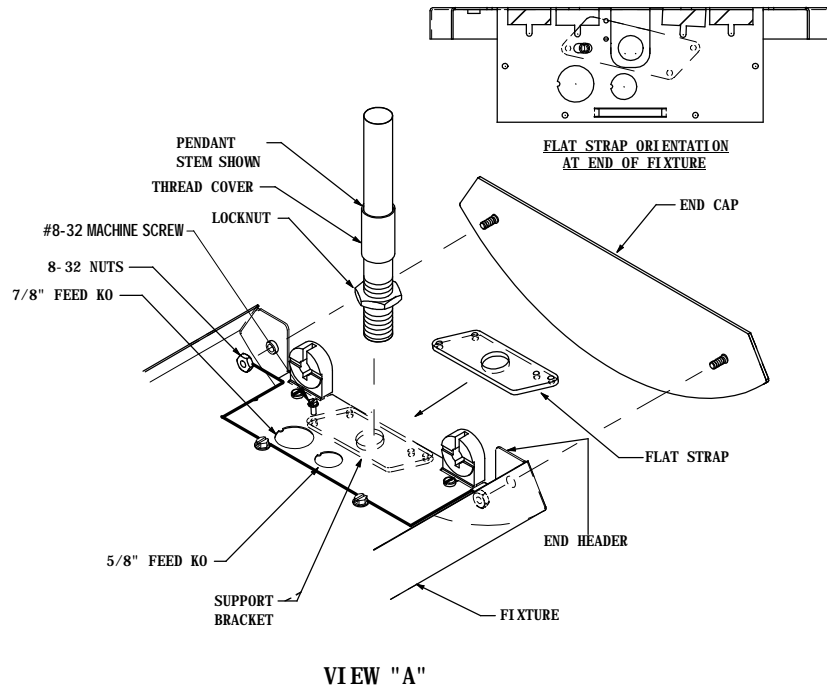
DATE: 12-11-08

PG. 1 OF 2

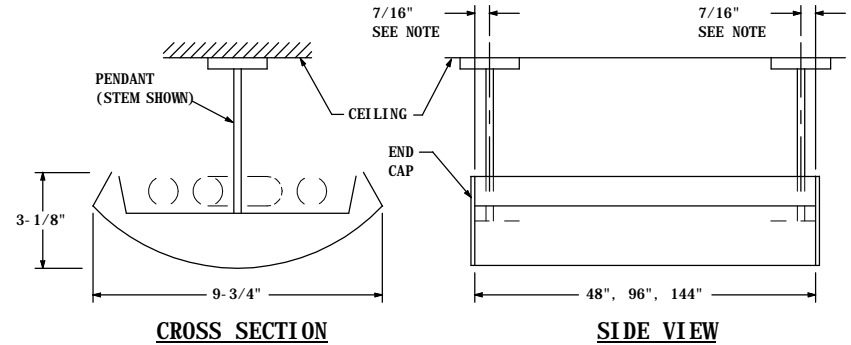
DO NOT MODIFY OR ALTER THIS PRODUCT IN ANY WAY, OR INSTALL IN ANY FASHION WHICH IS CONTRARY TO THE INSTRUCTIONS CONTAINED HEREIN.
IF YOU HAVE ANY QUESTIONS REGARDING THIS PRODUCT OR THE INSTALLATION OF IT, PLEASE CALL LITECONTROL ENGINEERING AT 781-294-0100.

General Notes: Read Instructions completely before starting.

- A. Reflector types and lamp quantity may vary within this fixture family but the general installation is the same for all 9800 series fixtures.
- B. Leaving foam wrapping on fixtures until mounting has been completed will help protect finish from damage.
- C. Fixtures are supplied with factory installed branch circuit wiring. Refer to supplemental instruction sheet for making connections.



VIEW "A"



CROSS SECTION

SIDE VIEW

NOTE: For Stem locations, use dimensions shown above.
For Aircraft cable locations, we recommend that hanging points be at 48", 96" or 144" increments.
function and appearance of installation.

INSTRUCTIONS:

1. Peel back foam wrapping material from both ends of fixture.
2. MOUNTING INDIVIDUAL FIXTURES:
 - A) Locate pendants in ceiling, along a straight line as shown in Side View above. Refer to Pendant Instruction sheet shipped separately.
 - B) Slide Flat Strap under Support Bracket at both ends of fixture as shown in View "A". attach flat strap with #8-32 machine screw to support bracket.
 - C) If aircraft cables are used to hang fixture, remove a 5/8" or 7/8" KO in support bracket at one end of fixture to bring in wire feed. (5/8" ko is used most of the time for 1-lamp or 3-lamp fixtures or when factory installed emergency lamp and switch is mounted in 5/8" ko). Feed may be run inside stems when they are used.
 - D) Slide a Thread Cover onto stems and thread a locknut onto stem or aircraft cable stud. Thread pendants into Flat Strap.
3. Lift fixture and mount pendants to ceiling. Level fixture up or down by threading stems or cable studs into Flat Straps. Tighten locknuts after fixture is level.
For stems only, slide Thread Covers down and rest on locknuts.
4. Run electrical feed cord (shipped separately) thru stem or into 5/8" KO and out thru cutout in end header. Make connections with branch circuit wires and then push wiring back into fixture. At opposite end of fixture, cap unused wires and push wiring back into fixture.

and securing with (2) 8-32 hex nuts. Make sure end caps are flush with ends of fixture before tightening nuts.

GO TO STEP 8 on page 2.

INSTALLATION
INSTRUCTIONS

FIXTURE TYPE _____

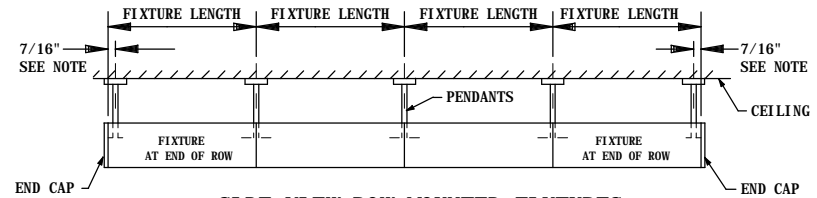
P-I-9800, P-S/I-9800
P-I-98PF00 FIXTURE

P/C 510354-6000

DATE: 12-11-08

PG. 2 OF 2

DO NOT MODIFY OR ALTER THIS PRODUCT IN ANY WAY, OR INSTALL IN ANY FASHION WHICH IS CONTRARY TO THE INSTRUCTIONS CONTAINED HEREIN.
IF YOU HAVE ANY QUESTIONS REGARDING THIS PRODUCT OR THE INSTALLATION OF IT, PLEASE CALL LITECONTROL ENGINEERING AT 781-294-0100.



SIDE VIEW-ROW MOUNTED FIXTURES

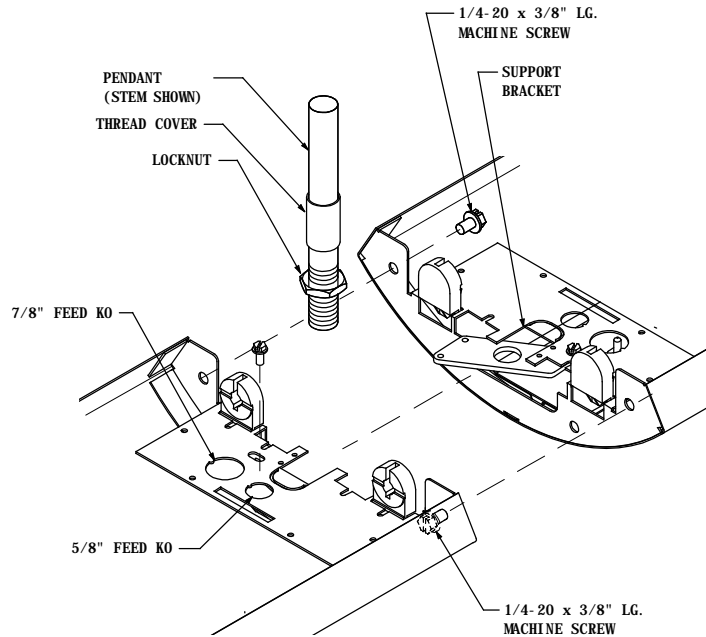
NOTE: For Stem locations, use dimensions shown above.
For Aircraft cable locations, we recommend that hanging points be at 48", 96" or 144" increments.

function and appearance of installation.

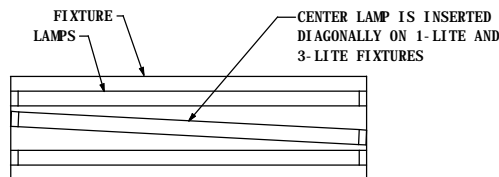
INSTRUCTIONS con't:

6. MOUNTING ROWS OF FIXTURES:

- A) Locate pendants in ceiling, along a straight line as shown in Side View above. Refer to Pendant Instruction sheet shipped separately.
 - B) Remove feed KO in support bracket per step 2C.
 - C) Starting with the fixture at one end of row, slide a flat strap under Support Bracket nearest End Cap and extend out end. Secure this strap in place with #8-32 machine screws. At opposite end of this fixture, slide another Flat strap under support bracket so half extends out end.
 - D) Slide on a Thread cover (stems only) and attach locknut onto (2) pendants, thread pendants into flat straps.
 - E) Lift fixture up and mount pendants to ceiling. Level fixture.
 - F) At the far end of the 2nd fixture in row, attach another flat strap with mach screw, thread cover, locknut and pendant to support bracket. Lift this fixture up and mount pendant to ceiling while sliding open end onto flat strap from first fixture at row joint. Refer to View "B".
At row joint, make branch circuit wiring connections between fixtures and push wiring back into cutout in end header.
 - G) Loosely bolt fixtures together thru holes in end headers with 1/4-20 X 3/8" long screws from polybag kit shipped with fixture.
 - H) Level fixtures up or down by threading stems or cable studs into flat straps.
 - J) Repeat steps F thru H for each additional fixture in row. After row is hung, leveled and wired, tighten all 1/4-20 row mounting screws.
 - K) At feed end of row, make wiring connections per step 4 on page 1.
7. Mount one End Cap at each end of row per step 5 on page 1.
 8. Raise and secure all pendant canopies.
Remove backing from adhesive backed covers and press onto each support bracket, covering the open slot as shown in View "B".
 9. Clean exterior surfaces of fixture with a window cleaner.
Install lamps (by others) by inserting pins into socket and then rotating lamp 90 degrees.
Refer to view showing diagonal center lamp position on 1 and 3-Lamp fixtures.



VIEW "B" - ROW JOINT ASSEMBLY



TOP VIEW - LAMP POSITIONS

LITECONTROL

100 HAWKS AVENUE - HANSON MA 02341. (781-294-0100) litecontrol.com