

INSTALLATION
INSTRUCTIONS

FIXTURE TYPE _____

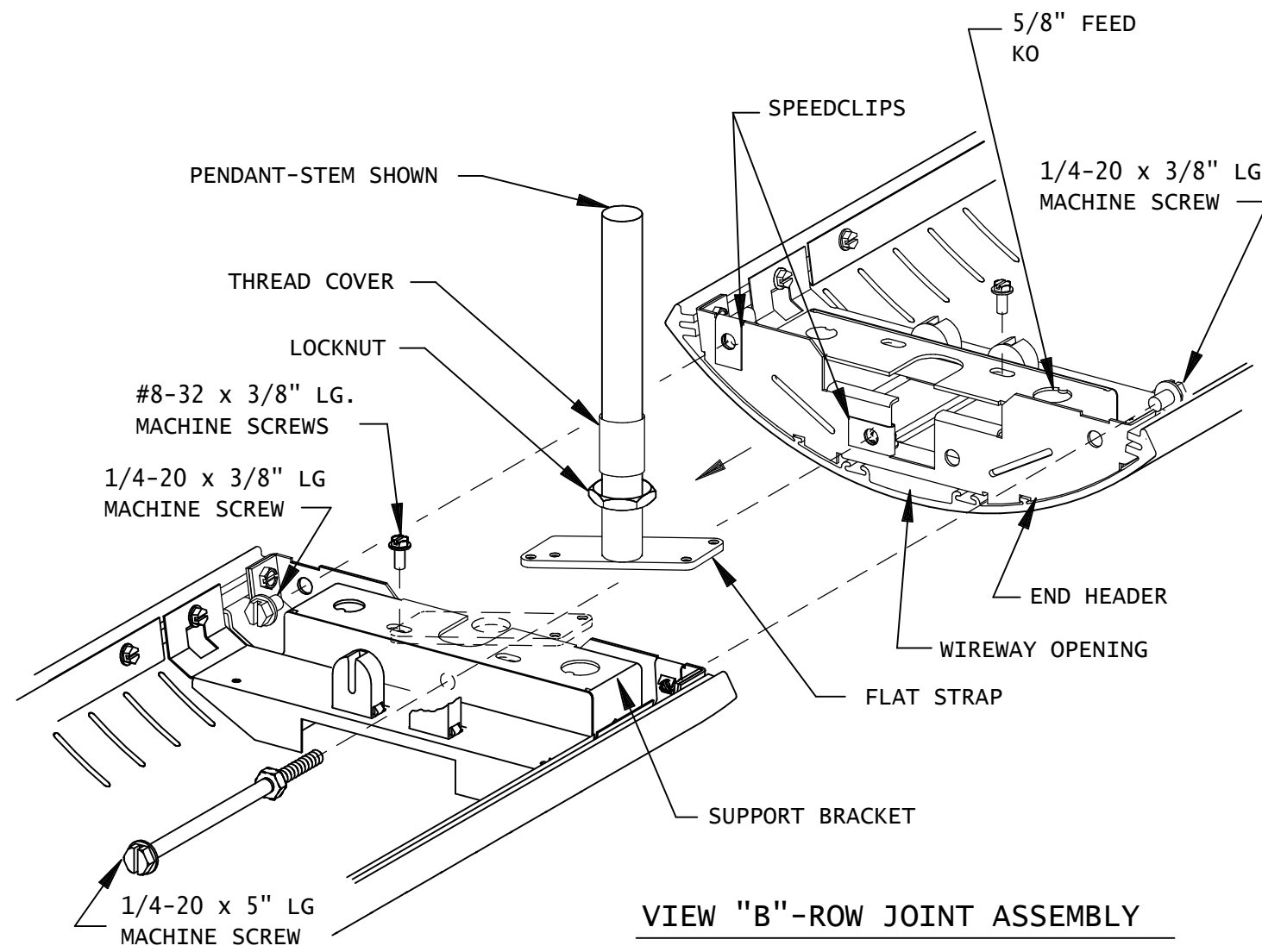
P-S/I-5400 T5
FIXTURE ASSEMBLY

P/c 510370-2000

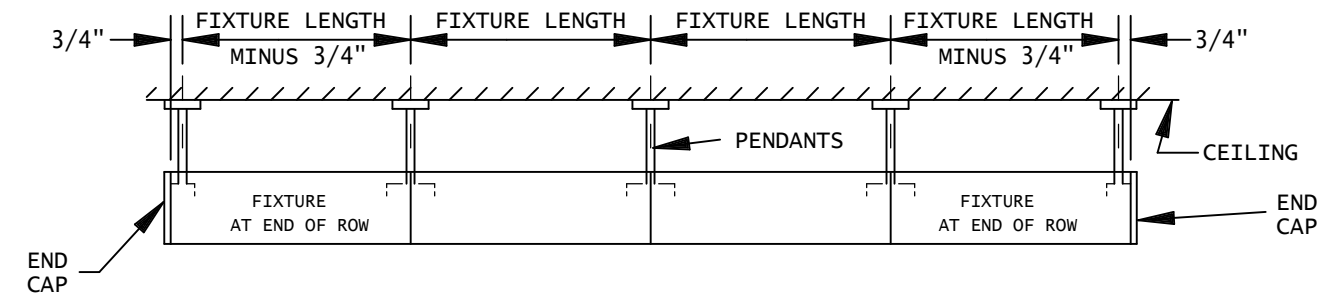
DATE: 4-9-03

PG. 2 OF 2

DO NOT MODIFY OR ALTER THIS PRODUCT IN ANY WAY, OR INSTALL IN ANY FASHION WHICH IS CONTRARY TO THE INSTRUCTIONS CONTAINED HEREIN. IF YOU HAVE ANY QUESTIONS REGARDING THIS PRODUCT OR THE INSTALLATION OF IT, PLEASE CALL LITECONTROL ENGINEERING AT 781-294-0100.



VIEW "B"-ROW JOINT ASSEMBLY



SIDE VIEW-ROW MOUNTED FIXTURES

INSTRUCTIONS con't:

3. MOUNTING ROWS OF FIXTURES:

- A) Locate pendants in ceiling, along a straight line as shown in Side View above. Refer to Pendant Instruction sheet shipped separately.
- B) Starting with the fixture at one end of row, attach a Thread Cover, Locknut, Flat Strap and a pendant underneath the Support Bracket per step 2B. Mount an End Cap to both end of row fixtures.
- C) Remove a 5/8" KO in support bracket for wire feed if aircraft cables are being used to hang fixtures. Feed may be run inside stems when they are used.
- D) At opposite end of this fixture, loosely mount a Flat Strap underneath the support bracket with (1) #8-32 x 3/8" long machine screw. (See View "B") Thread a Locknut onto pendant and thread pendant into flat strap. NOTE: Position Flat Strap so that it projects out from end of fixture.
- E) Lift fixture up and mount pendants to ceiling.
- F) At the far end of the 2nd fixture in row, mount a Thread Cover, Flat Strap, locknut and pendant to its support bracket per step 3D above. Lift open end of this fixture onto the Flat strap of 1st fixture and attach pendant end to ceiling. Grasp pendant at row joint and rotate Flat Strap until diagonal mounting hole aligns underneath the Support Bracket slot of 2nd fixture. Secure with (1) #8-32 x 3/8" long machine screw.
- G) Remove 1/4-20 screws from polybag kit shipped with fixture. Loosely bolt both fixtures together thru the holes in end headers into the speed clips: (1) 1/4-20 x 5" long screw is used in one of the lower holes and (2) 1/4-20 x 3/8" long machine screws are used in the upper set of holes.
- H) Level fixtures up or down by threading stems or cable studs into flat straps. Level fixtures horizontally by sliding flat straps from side to side while lifting up end of fixture.
- J) Repeat steps F and G for each additional fixture in row. After row is hung and leveled, tighten all row mounting bolts and flat strap screws.

4. Wire feed may be brought into abutting fixtures thru wireway opening in End Headers. Make wiring connections.
5. Raise and secure all pendant canopies. Replace reflectors.
6. Clean exterior surfaces of fixture with a window cleaner and install lamps (by others).