

**INSTALLATION
INSTRUCTIONS**

PART
NO. 510248-2000

FIXTURE TYPE _____

**P-ID-9000
BAFFLE ASSY**

PG. 1
OF 1

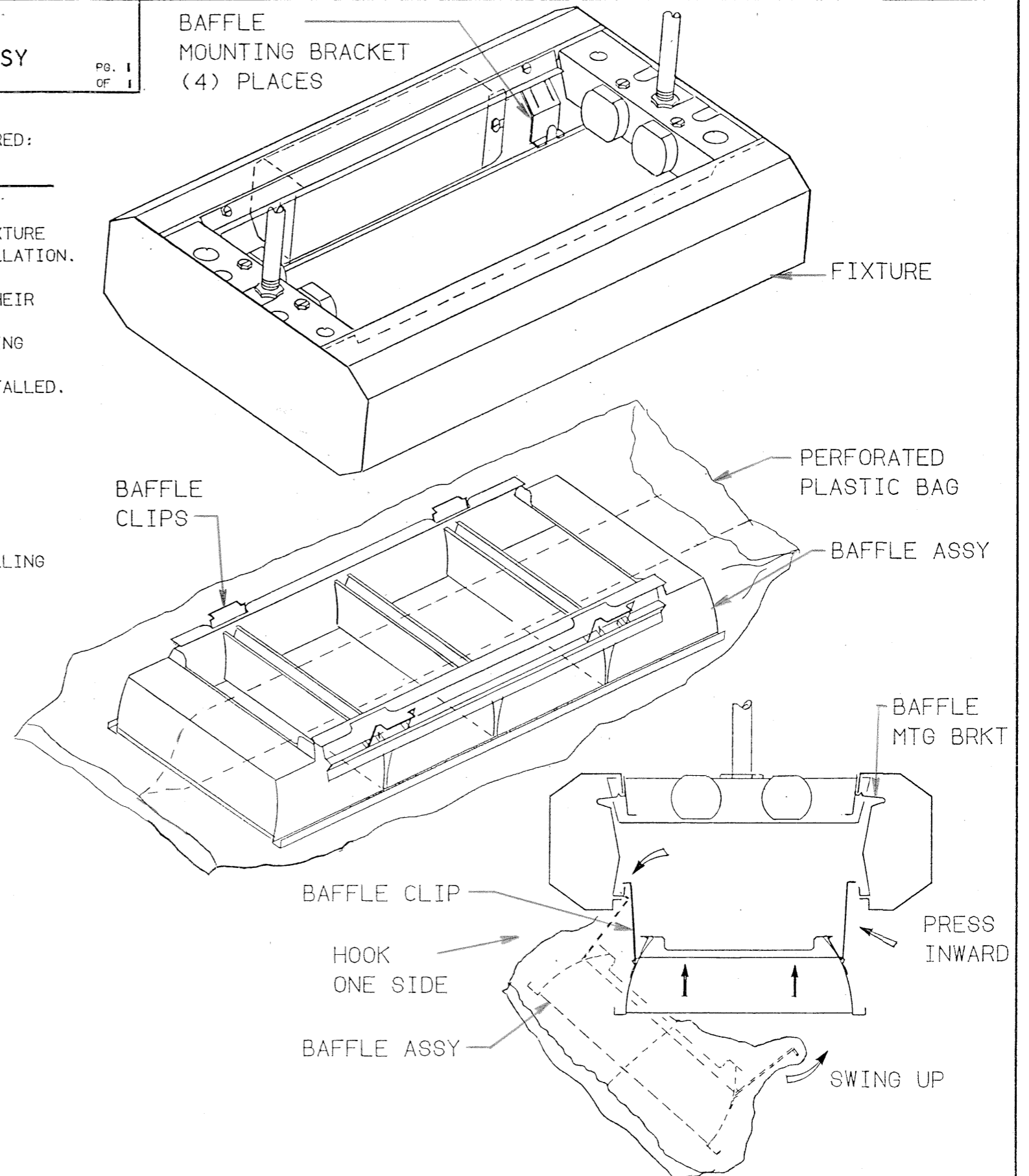
BAFFLE
MOUNTING BRACKET
(4) PLACES

GENERAL NOTE:

BAFFLE ASSEMBLIES ARE INSTALLED AFTER FIXTURES HAVE BEEN MOUNTED AND WIRED:
REFER TO INSTRUCTION SHEET NO. 510249.

INSTRUCTIONS:

1. REMOVE BAFFLE FROM CARTON, KEEPING PLASTIC BAG OVER BAFFLE UNTIL FIXTURE IS READY FOR LAMPING. THIS WILL HELP BAFFLE STAY CLEAN DURING INSTALLATION.
2. LIFT BAFFLE, WITH BAG INTO FIXTURE AND HOOK THE BAFFLE CLIPS ONTO THEIR MOUNTING BRACKETS. SWING THE OTHER SIDE UP AND HOOK CLIPS ONTO THEIR BRACKETS BY PRESSING CLIPS INWARD. BAFFLE MAY BE KEPT IN THIS POSITION UNTIL LAMPS (BY OTHERS) ARE INSTALLED.
3. JUST PRIOR TO INSTALLING LAMPS: GRASP BOTH SIDES OF PLASTIC BAG AND SEPARATE ALONG PERFORATIONS. REMOVE TOP AND ANY TORN PIECES OF PLASTIC THAT MAY HAVE BEEN CAUGHT ON BAFFLE SIDES. KEEPING THE LOWER PORTION OF BAG BETWEEN YOUR HANDS AND BAFFLE, PUSH BAFFLE UPWARD UNTIL IT SEATS IN FIXTURE.
4. FUTURE BAFFLE CLEANING MAY BE DONE BY GENTLY GRASPING BLADES AND PULLING BAFFLE DOWNWARD UNTIL CLIPS BOTTOM OUT AT BRACKETS. CLEAN BAFFLE PER ATTACHED CLEANING LABEL.



LITECONTROL

100 HAWKS AVENUE - PO BOX 100 - HANSON MA 02341, 781-294-0100

FORM B520140-1