

INSTALLATION INSTRUCTIONS

**W-AI-3414T5HO-EF
W-ASD-3414T5HO-EF
W-AID-3414T5HO-EF**

P/C 510438-0000

FIXTURE TYPE _____

DATE: 11-18-02

PG. 1 OF 2

DO NOT MODIFY OR ALTER THIS PRODUCT IN ANY WAY, OR INSTALL IN ANY FASHION WHICH IS CONTRARY TO THE INSTRUCTIONS CONTAINED HEREIN. IF YOU HAVE ANY QUESTIONS REGARDING THIS PRODUCT OR THE INSTALLATION OF IT, PLEASE CALL LITECONTROL ENGINEERING AT 781-294-0100.

GENERAL NOTES:

1. End Caps and Fascia's are shipped separately. Refer to the instruction sheets that are shipped with these parts.
2. Fascia's may be rotated into one of (3) positions as shown in End Views.
3. 2" x 4" Outlet Box with Cover, No. 10 Fixture mounting screws, washers and wall anchors are supplied by installer.

INSTRUCTIONS:

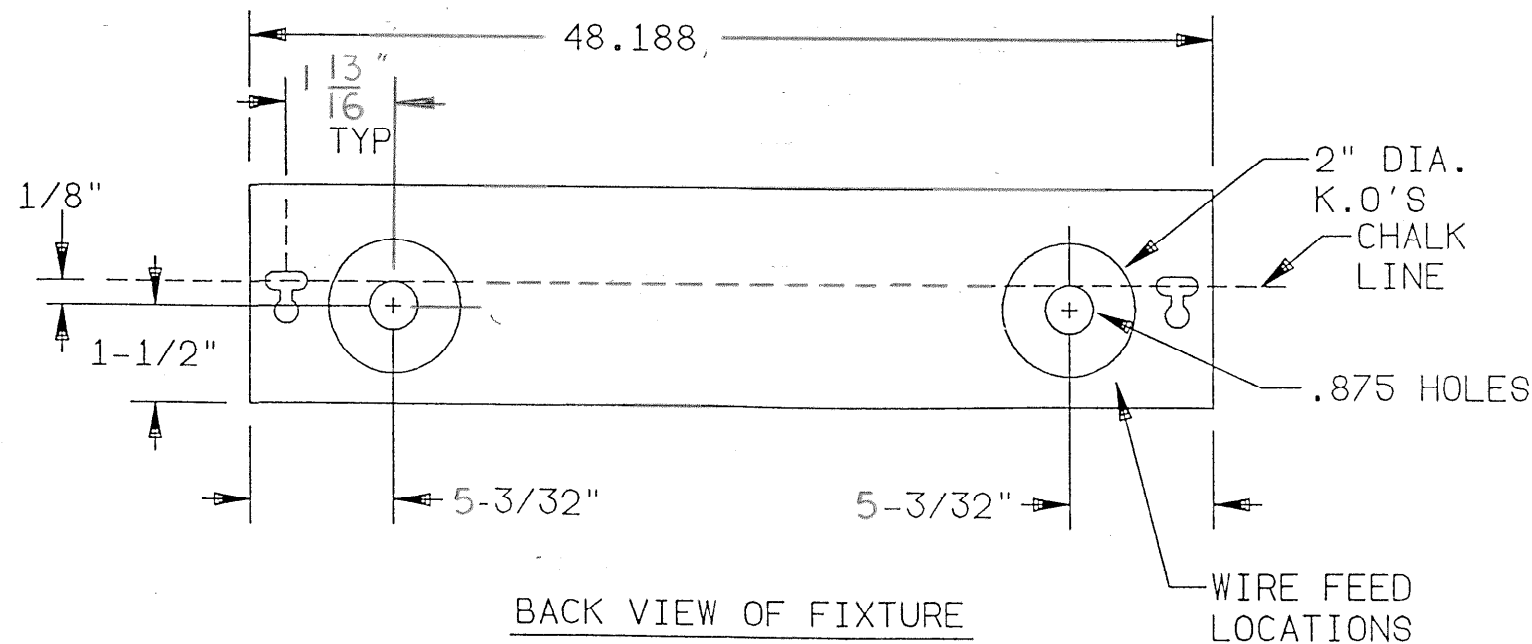
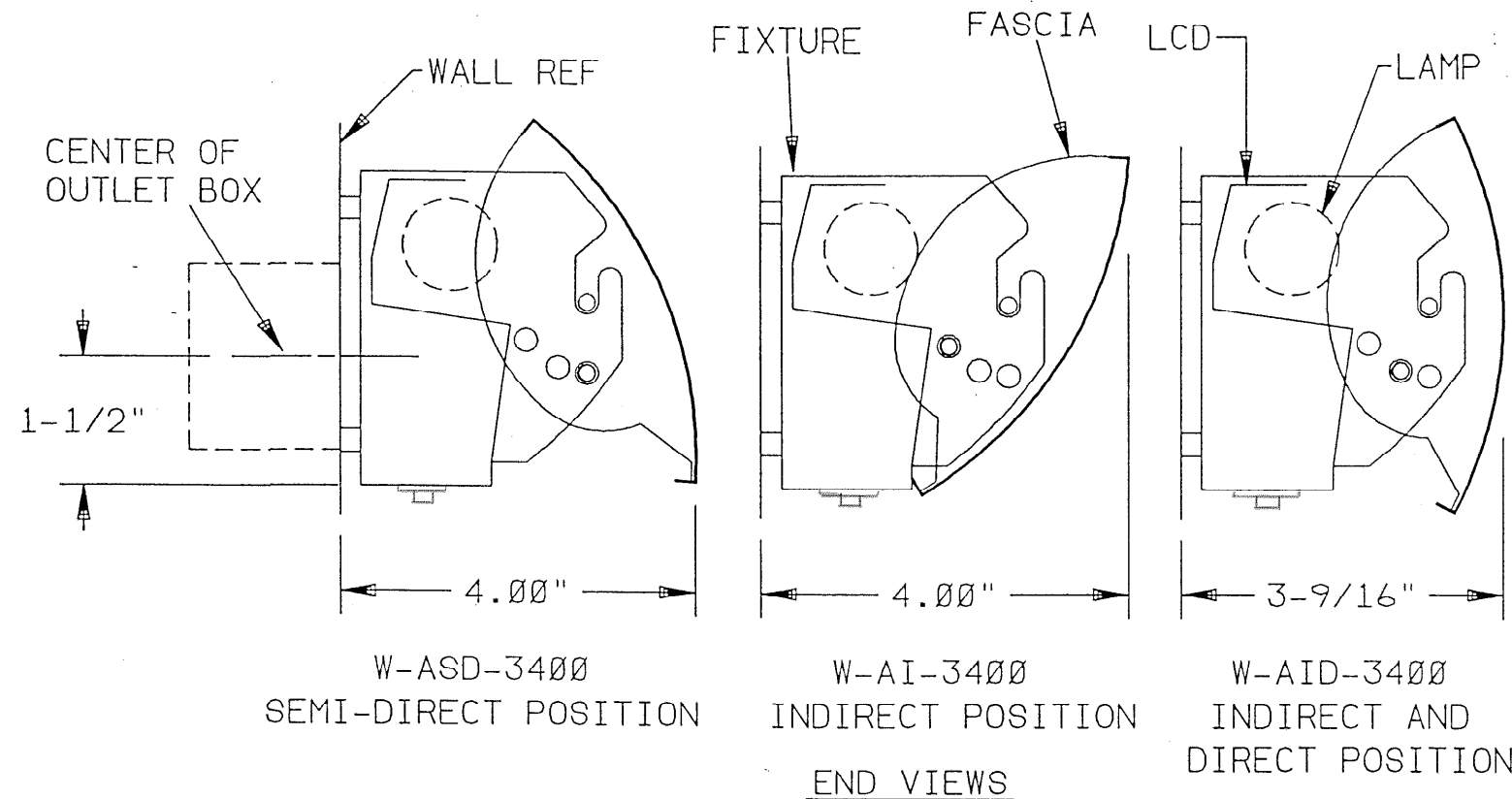
1. Chalk a level line along mounting wall 1/8" above center of outlet box.
2. Remove foam wrapping from fixture and lift off ballast cover by loosening (2) sheetmetal screws. Note: LCD is shipped unattached.
3. Fixture is supplied with (2) 7/8" holes and (2) 2" diameter knockouts for bringing wire feed into back of housing. Knockout may be removed for access to outlet box per applicable codes.

4. MOUNTING INDIVIDUAL FIXTURES:

- A) Align wire feed hole in back of housing with center of outlet box and using T-Slots as a template, locate (2) mounting positions, (one at each end of fixture) on chalk line. See Back View.
- NOTE: Fixtures have Rubber bumpers installed inline with T-slots in back of housing and should be installed at each mounting screw location. Additional bumpers have been shipped in polybag kit.
- B) Press (2) bumpers into holes in back of housing at each mounting screw location (if required). Bring feed into fixture wireway and using No. 10 screws with washers, mount housing to wall. Level housing before tightening screws. Do not deform housing when tightening screws. See views on page 2.
 - C) Locate an additional mounting screw in one of the unused bumper holes to prevent fixture from being dislodged after installation.
 - D) Make wiring connections and replace ballast cover(s).

5. MOUNTING ROWS OF FIXTURES:

- A) Locate the first fixture in row per steps 4A and 4B above.
- B) Place the next fixture in row up against end of the first fixture and mount this fixture per steps 4A & 4B. Level this fixture so that the end headers at joint are aligned with each other. Bolt end headers together thru the keyed end of the 5/8" feed thru hole with (1) #10-24 x 1/2" long machine screw and nut found in polybag. See view on page 2. Repeat this step for each additional fixture in row.
- C) Make wiring connections in fixture wireway. Feed maybe run into adjacent fixtures thru 5/8" keyholes in end headers.
- D) In each housing in row, locate an additional mounting screw in one of the unused bumper holes to prevent fixtures from being dislodged.
- E) Replace all ballast covers.



LITECONTROL

100 HAWKS AVENUE - HANSON MA 02341, (781-294-0100)

FILE COPY

INSTALLATION
INSTRUCTIONS

FIXTURE TYPE _____

W-AI-3414T5HO-EF
W-ASD-3414T5HO-EF
W-AID-3414T5HO-EF

P/C 510438-0000

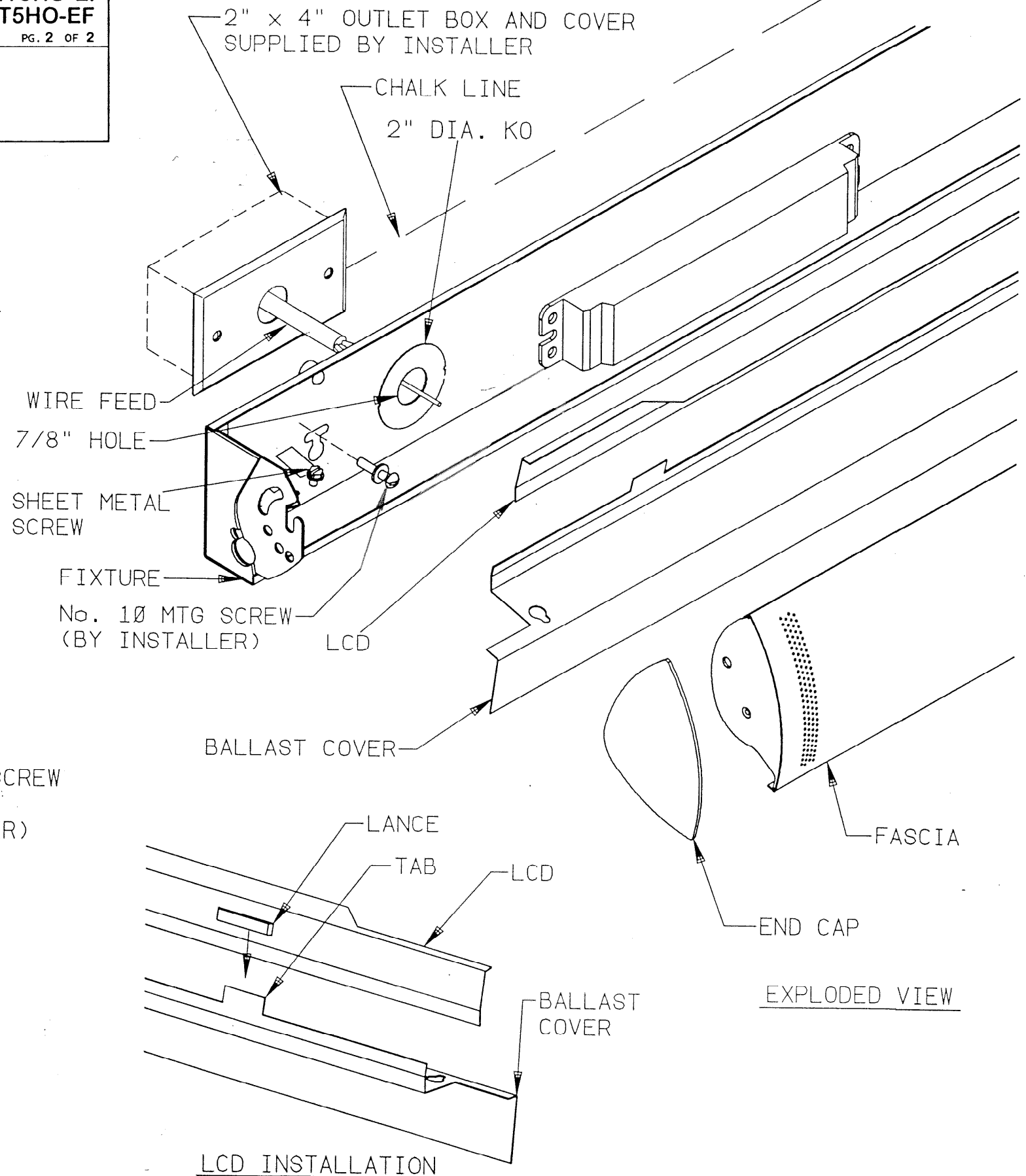
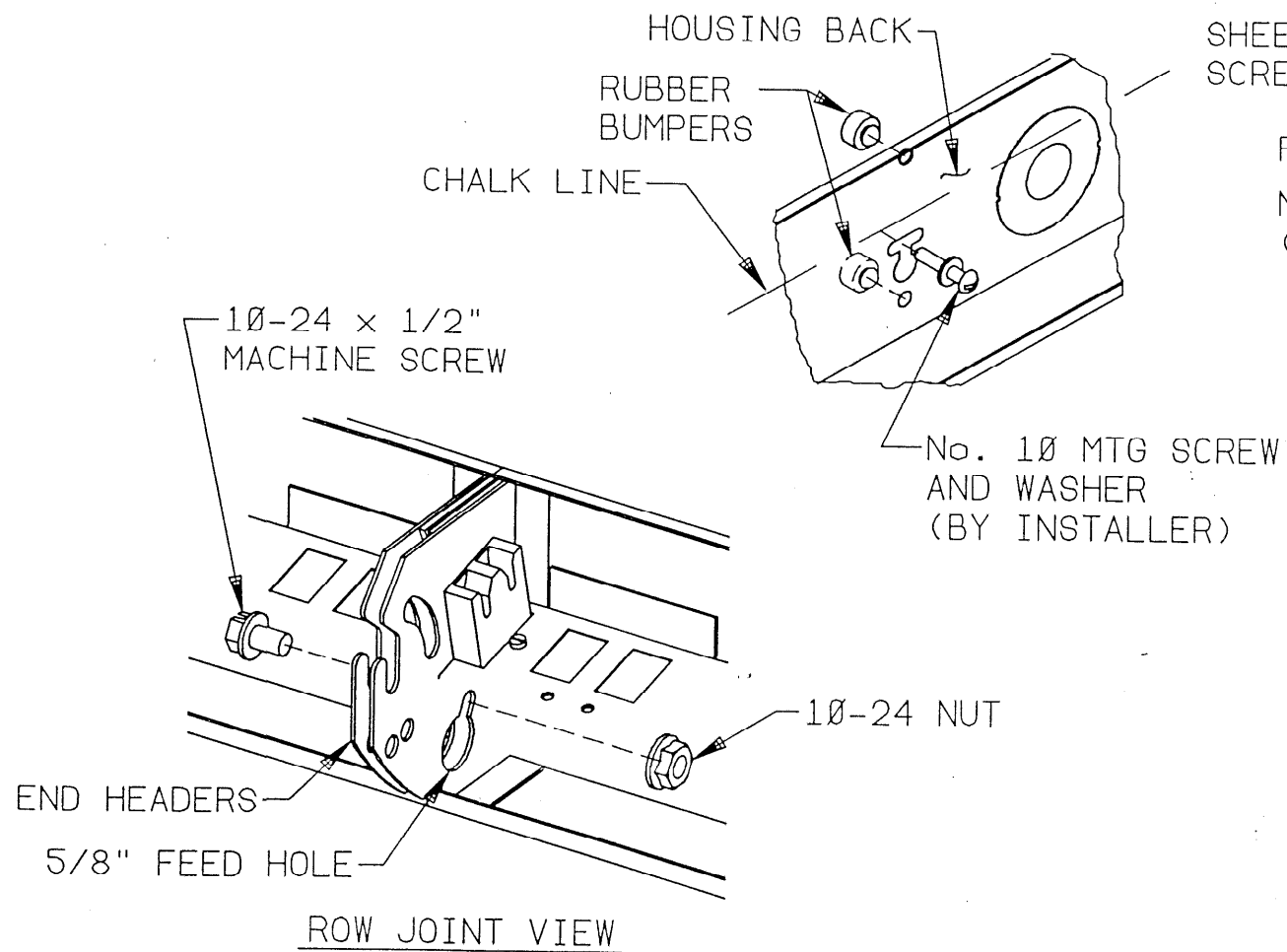
DATE: 11-18-02

PG. 2 OF 2

DO NOT MODIFY OR ALTER THIS PRODUCT IN ANY WAY, OR INSTALL IN ANY FASHION WHICH IS CONTRARY TO THE INSTRUCTIONS CONTAINED HEREIN. IF YOU HAVE ANY QUESTIONS REGARDING THIS PRODUCT OR THE INSTALLATION OF IT, PLEASE CALL LITECONTROL ENGINEERING AT 781-294-0100.

INSTRUCTIONS con't:

6. Install lamps (by others). NOTE: T5 Lamps are inserted into sockets then are rotated 90 degrees to activate.
7. Slide lances on LCD fully into tabs on ballast covers: See view below.
8. Mount Fascia's to fixtures per instruction sheet 510382.
CAUTION POSITION FASCIA'S AS SHOWN PER CATALOG NUMBER.
9. Attach an End Cap to both ends of an individually mounted fixture or at each end of a row of fixtures per instruction sheet 510383.



LITECONTROL

100 HAWKS AVENUE - HANSON MA 02341, (781-294-0100)

FILE COPY