

INSTALLATION  
INSTRUCTIONS

FIXTURE TYPE \_\_\_\_\_

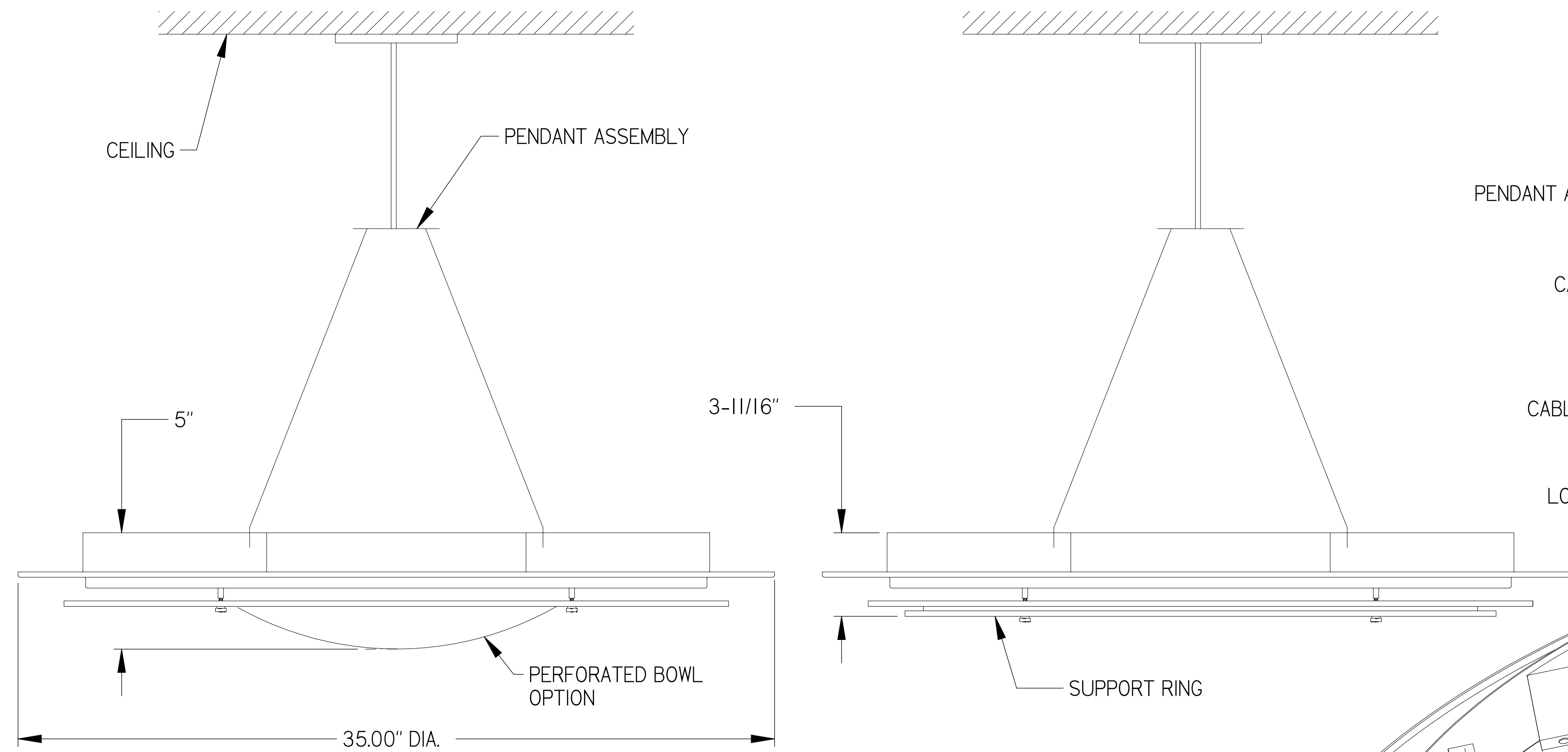
P-ID-3600  
FIXTURE ASSEMBLY

P/C 510432-0000

DATE: 03/12/02

PG. 1 OF 1

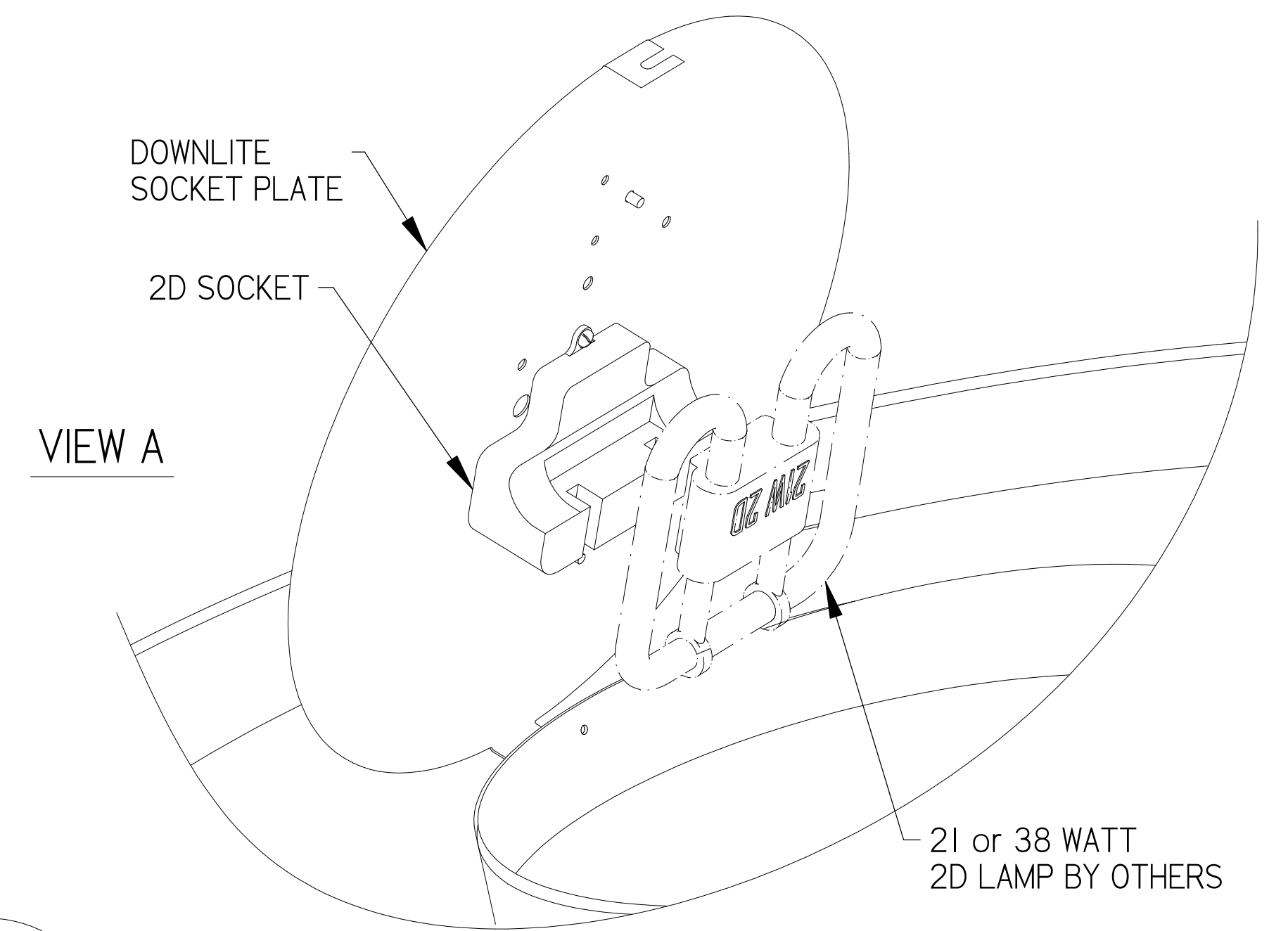
DO NOT MODIFY OR ALTER THIS PRODUCT IN ANY WAY, OR INSTALL IN ANY FASHION WHICH IS CONTRARY TO THE INSTRUCTIONS CONTAINED HEREIN.  
IF YOU HAVE ANY QUESTIONS REGARDING THIS PRODUCT OR THE INSTALLATION OF IT, PLEASE CALL LITECONTROL ENGINEERING AT 781-294-0100.



ELEVATION VIEWS

INSTRUCTIONS:

1. INSTALL PENDANT ASSEMBLY (SHIPPED SEPARATELY) PER INSTRUCTION SHEET No. 510358.
2. LOOSEN ACCESS COVER SHEET METAL SCREWS AND REMOVE COVER. REMOVE THE 7/8" KNOCKOUT IN COVER AS SHOWN.
3. LOOSEN THE (2) SHEET METAL SCREWS HOLDING THE DOWNLITE SOCKET PLATE. ROTATE AND LIFT OFF SOCKET PLATE. INSERT A 21 OR 38 WATT 2D LAMP BY OTHERS INTO SOCKET (SEE VIEW "A") REPLACE SOCKET PLATE.  
NOTE: RELAMPING MAY ALSO BE DONE BY REMOVING THE (3) THUMB SCREWS AND LOWERING SUPPORT RINGS TO EXPOSE THE 2D SOCKET.
4. LIFT FIXTURE UP AND THREAD THE (3) CABLE STUDS INTO HOUSING AS SHOWN IN VIEW. LEVEL FIXTURE BY THREADING STUDS IN OR OUT OF MOUNTING HOLES AND THEN TIGHTEN LOCKNUTS.
5. POSITION FEED CORD AGAINST ADJACENT CABLE AND TIE CORD TO CABLE WITH NYLON TIE FASTENERS (SHIPPED WITH PENDANT ASSY)
6. ATTACH A STRAIN RELIEF BUSHING (SHIPPED WITH PENDANT ASSY) TO LOWER END OF FEED CORD AND SNAP BUSHING INTO 7/8" K.O. ACCESS COVER AS SHOWN.
7. MAKE WIRING CONNECTIONS AND THEN TUCK WIRES BACK UNDER ACCESS COVER AND TIGHTEN SCREWS.
8. INSTALL LAMPS (BY OTHERS) BY INSERTING LAMP BASE INTO SOCKET WHILE SWINGING LAMP DOWNWARD INTO LAMP CLIP.
9. CLEAN LAMP EXTERIOR WITH GENERAL WINDOW CLEANER.



VIEW A

