

**INSTALLATION
INSTRUCTIONS**

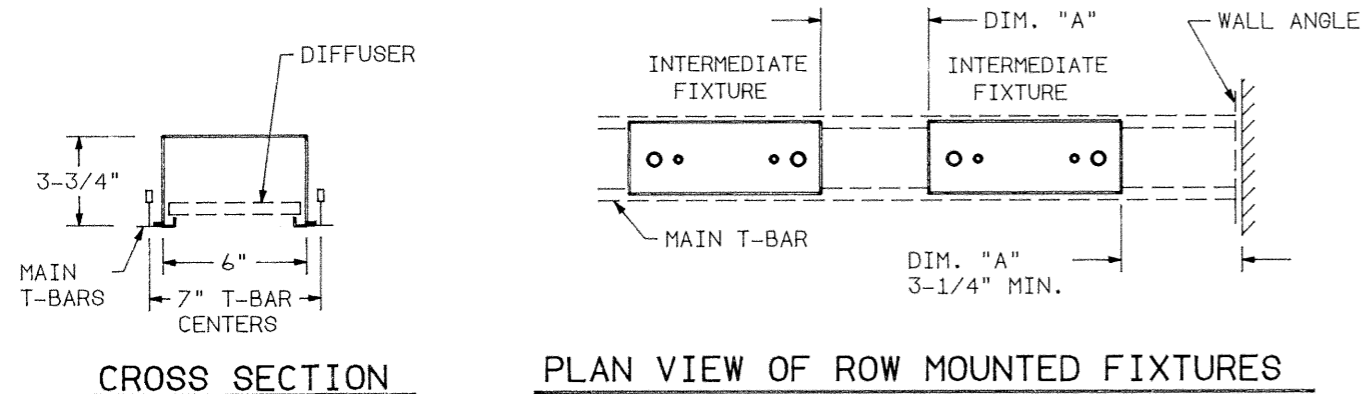
SECTION TYPE _____

**LG-D-66N00-FS
FIELD TRIMMED
FILLER SECTION**

PG. 1
OF 2

PART
NO. **510136-3000**

DO NOT MODIFY OR ALTER THIS PRODUCT IN ANY WAY, OR INSTALL IN ANY FASHION WHICH IS CONTRARY TO THE INSTRUCTIONS CONTAINED HEREIN.
IF YOU HAVE ANY QUESTIONS REGARDING THIS PRODUCT OR THE INSTALLATION OF IT, PLEASE CALL LITECONTROL ENGINEERING AT 781-294-0100



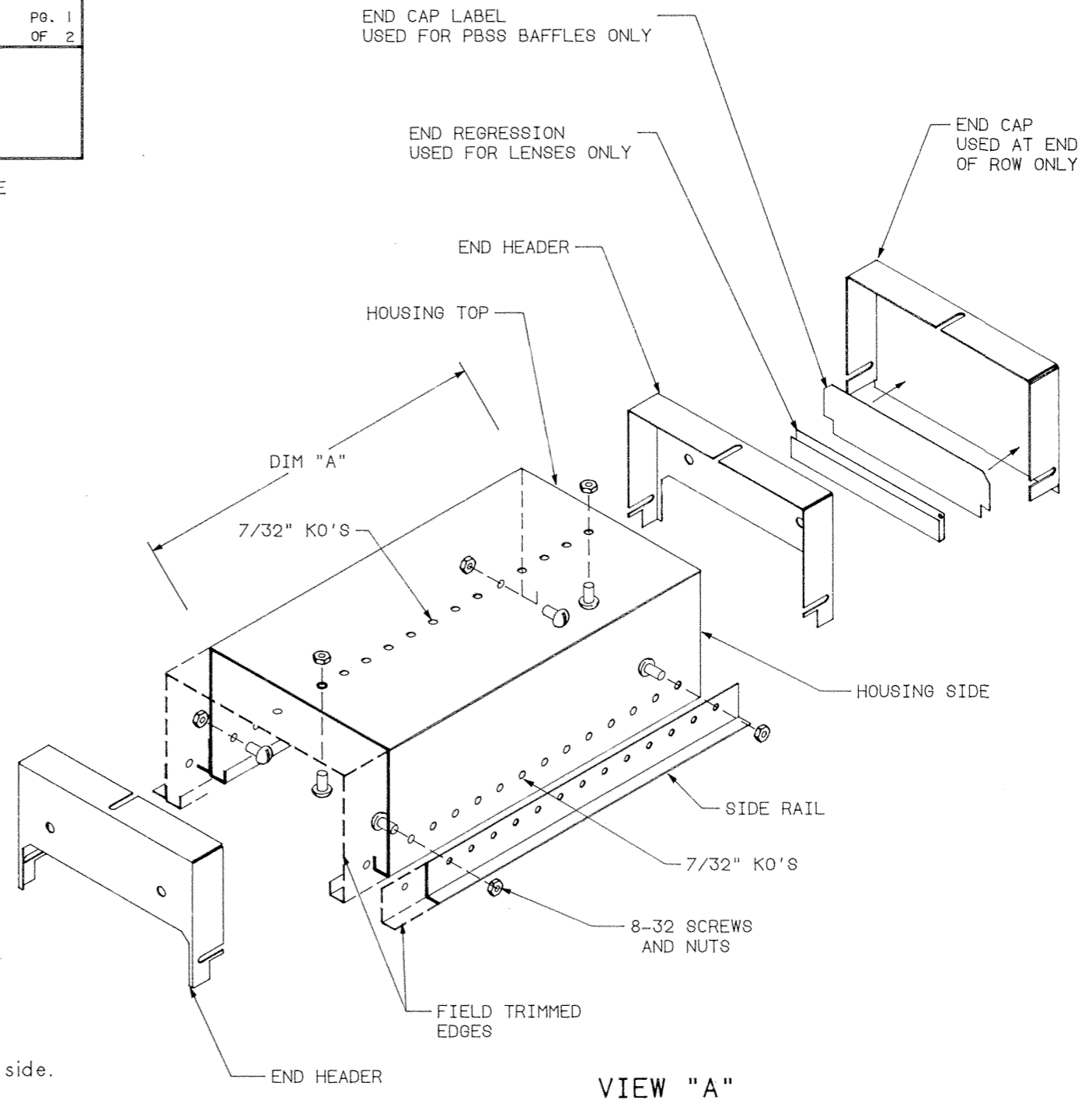
GENERAL NOTES: (READ SHEETS COMPLETELY BEFORE STARTING)

- A) Filler sections are used at ends of rows or between two intermediate fixtures for continuous row appearance. Maximum length of filler section is 12".
- B) Filler sections have no wireway and electrical connections cannot be made or run in them.
- C) Filler sections are factory assembled and will require disassembly for field trimming. Diffusers and hardware kits are shipped with filler section.

INSTRUCTIONS:

1. Measure Dimension "A" between end of fixture and wall or between two fixtures as shown in Plan View above.
2. Starting at one end of Filler Section, mark distance from Dim. "A" on all sides and then disassemble section by removing (6) 8-32 screws and nuts. See View "A".
3. Sawcut housing top, sides and rails to length and remove all burrs.
NOTE: Be careful not to scratch paint off surfaces.
4. Remove the 7/32" ko's nearest the trimmed edge in the housing top and each side.
5. Re-assemble Filler Section using the knockouts removed in step 4 to mount the 8-32 screws and nuts.

- NOTE: If filler section is used between (2) fixtures, do not re-attach End Cap.
- 6A. When a Filler Section is used at the end of a row and is supplied with parabolic baffles (PBSS), attach an End Cap Label to End Cap by peeling off paper backing and using the cutout in the End Header as a guide, firmly press label onto End Cap.



**INSTALLATION
INSTRUCTIONS**

PART NO. **510136-3000**

SECTION TYPE _____

**LG-D-66N00-FS
FIELD TRIMMED
FILLER SECTION**

PG. 2
OF 2

DO NOT MODIFY OR ALTER THIS PRODUCT IN ANY WAY, OR INSTALL IN ANY FASHION WHICH IS CONTRARY TO THE INSTRUCTIONS CONTAINED HEREIN.
IF YOU HAVE ANY QUESTIONS REGARDING THIS PRODUCT OR THE INSTALLATION OF IT, PLEASE CALL LITECONTROL ENGINEERING AT 781-294-0100

6B. When a Filler section is used at the end of a row and is supplied with a lense diffuser, attach an End Regression to End Cap by peeling off paper backing and locate bottom surface of regression flush with bottom edge of housing sides; firmly press regression onto end cap.

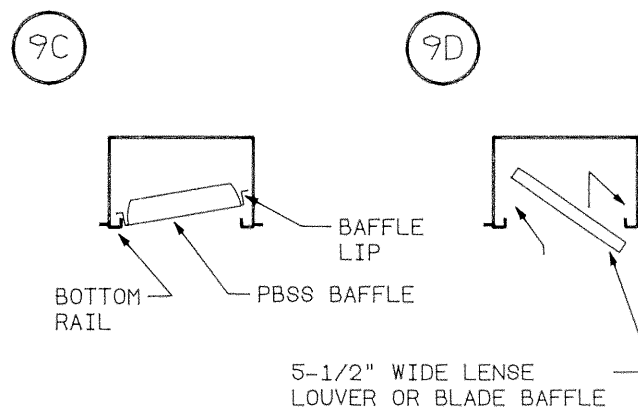
7. MOUNTING FILLER SECTION:

- A) Lift Filler Section into ceiling opening and abutt the Intermediate fixture(s). Loosely bolt Filler Section to fixture at row joint with (2) 1/4-20 x 3/8" long machine screws and nuts thru lower holes in end headers; See View "B".
- B) Press a Spline (found in polybag) into each bottom rail at row joint for alignment.
- C) Level each fixture and align seams at row joint before tightening all screws.
- D) Install Wireway Cap studs into upper holes in fixture end header and secure with (2) 8-32 hex nuts. Wire feed conduit may be fed thru 7/8" hole in Cap, otherwise use plug button to cover hole.

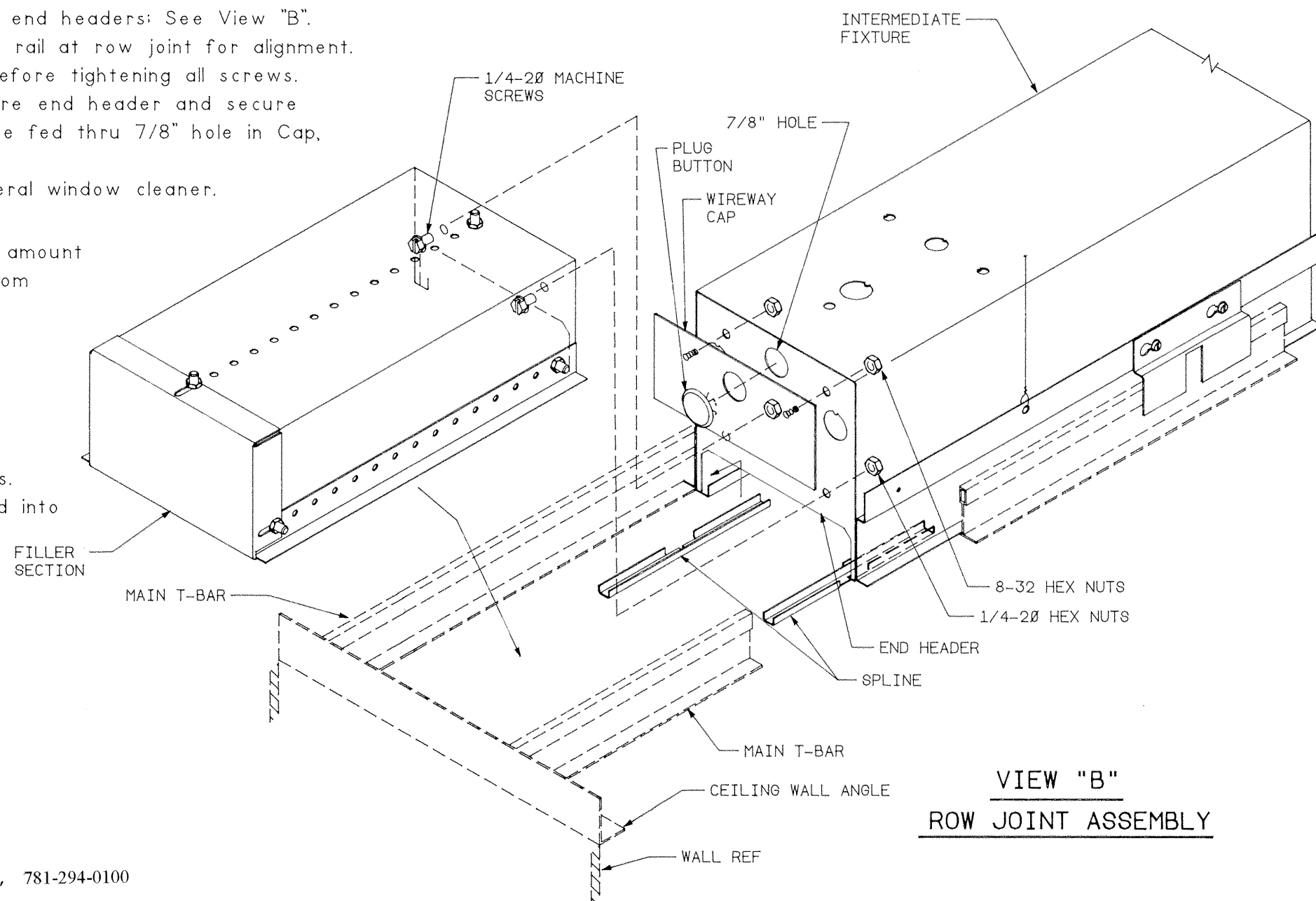
8. Clean exterior surfaces of filler section with a general window cleaner.

9. DIFFUSER INSTALLATION:

- A) Diffusers are field trimmed from one end and the amount to be cut off is equal to the amount removed from trimmed filler section.
- B) Center Dividers are used at the row joint ONLY when Plastic lenses or Louvers are used. Refer to fixture instruction sheet 510137.
- C) PARABOLIC BAFFLES (PBSS or PBSG) are shifted into filler section and lowered into place by pulling down on baffle until lip sits on bottom rails.
- D) LENSES, LOUVERS AND BLADE BAFFLES are shifted into filler section and rest on top of bottom rails.



DIFFUSER INSTALLATION



**VIEW "B"
ROW JOINT ASSEMBLY**