

**INSTALLATION
INSTRUCTIONS**

CORNER TYPE _____

**CORNER BOXES
66N00 & 86N00**

PART
NO. **51010-3000**

PG. 1
OF 2

DO NOT MODIFY OR ALTER THIS PRODUCT IN ANY WAY, OR INSTALL IN ANY FASHION WHICH IS CONTRARY TO THE INSTRUCTIONS CONTAINED HEREIN.
IF YOU HAVE ANY QUESTIONS REGARDING THIS PRODUCT OR THE INSTALLATION OF IT, PLEASE CALL LITECONTROL ENGINEERING AT 781-294-0100

GENERAL NOTES: (READ SHEETS COMPLETELY BEFORE STARTING)

- A) Litecontrol recommends that (1) abutting fixture be mounted to a Corner Box before lifting up to ceiling.
- B) Installation is similar for all types of Corner Boxes.

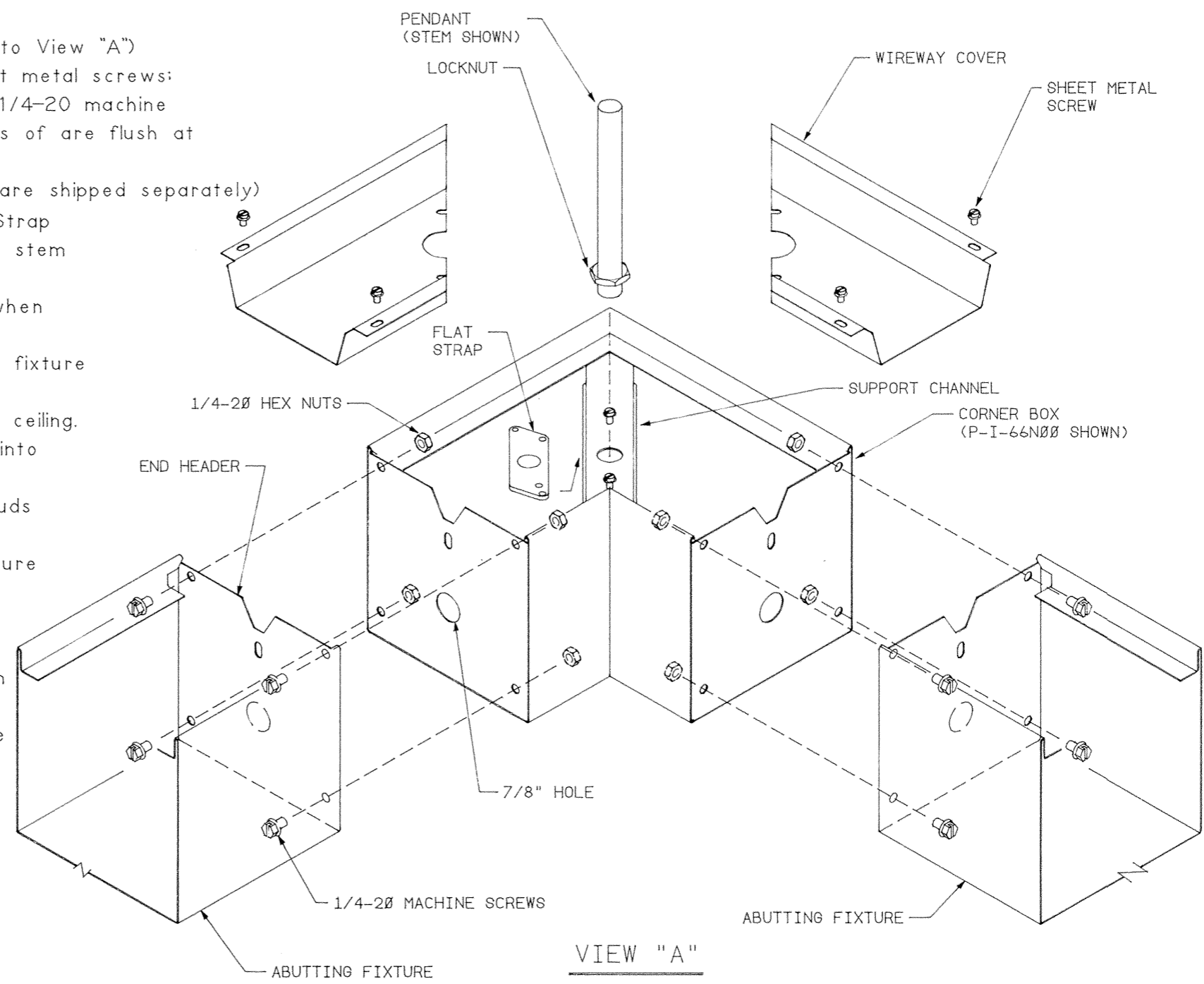
INSTRUCTIONS for P-I, W-I & W-AI-66N/86N CORNERS: (Refer to View "A")

- 1. Lift out Wireway Covers from Corner Box by removing sheet metal screws;
- 2. Attach Corner box to one of the abutting fixtures with (4) 1/4-20 machine screws and Hex Nuts thru end headers. Make sure all sides of are flush at joint before tightening screws.
- 3. **FOR PENDANT MOUNTED CORNERS (P-I-66N/86N):** (pendants are shipped separately)

- A) Thread a locknut onto stem or cable stud; position a Flat Strap underneath the center hole in support channel and thread stem into flat strap.
Refer to View "A" on Cable instruction sheet No. 510227 when aircraft cables are used.
- B) Mount another pendant to the opposite end of the abutting fixture per its installation instructions.
- C) Lift fixture/corner box assembly up and mount pendants to ceiling. Wire feed may be brought thru 7/8" holes in end headers into fixture wireway.
- D) Level assembly up or down by threading stems or cable studs into Flat Straps. Tighten all locknuts after leveling.
- E) Mount a pendant to the far end of the other adjacent fixture in pattern. Lift fixture up and attach non-pendant end of fixture to open end of corner box per step 2.

4. FOR WALL MOUNTED CORNERS (W-I & W-AI-66N00).

- Corner boxes have been factory cut to fit opening between (2) adjacent fixtures.
- Insert corner into opening and loosely bolt thru each fixture end header with (4) 1/4-20 machine screws and hex nuts.
- Align all seams before tightening screws.
- 5. Wire feed may be brought thru 7/8" holes in headers.
- 6. Replace Wireway covers and clean exterior surfaces with a general window cleaner.



INSTALLATION INSTRUCTIONS

CORNER TYPE _____

CORNER BOXES 66N00 & 86N00

PART NO. 510110-3000

PG. 2 OF 2

INSTRUCTIONS for P-D, P-ID & P-S/D-66N/86N CORNERS: (Refer to View "B")

7. Take out Wireway Covers from bottom of Corner Box by removing sheet metal screws;
8. Attach Corner box to one of the abutting fixtures with (4) 1/4-20 machine screws and Hex Nuts thru end headers. Press a Spline into each bottom rail and align seams at joint before tightening screws.
- 9.A) Thread a locknut onto stem or cable stud; position a Flat Strap underneath the center hole in top of corner and thread stem into flat strap. Refer to View "A" on Instruction sheet No. 510227 when cables are used.
- B) Mount another pendant to the opposite end of the abutting fixture per its installation instructions.
- C) Lift fixture/corner box assembly up and mount pendants to ceiling. Wire feed may be brought thru 7/8" holes in end headers into fixture wireway.
- D) Level assembly up or down by threading stems or cable studs into Flat Straps. Tighten all locknuts after leveling.
- E) Mount a pendant to the far end of the other adjacent fixture in pattern. Lift fixture up and attach non-pendant end of fixture to open end of corner box per Step 8.

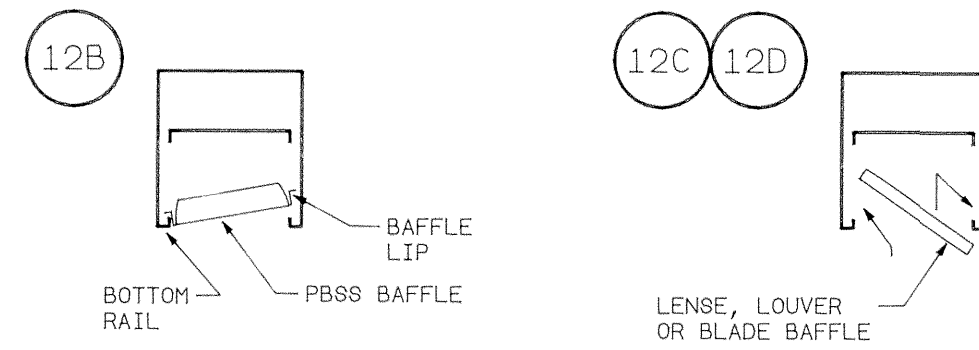
10. FOR WALL MOUNTED CORNERS (W-D, W-ID & W-AID-66N00):

Corner boxes have been factory cut to fit opening between two adjacent fixtures. Insert corner into opening and loosely bolt thru each fixture end header with (4) 1/4-20 machine screws and hex nuts. Press a Spline into each bottom rail at both row joints and align all seams before tightening screws.

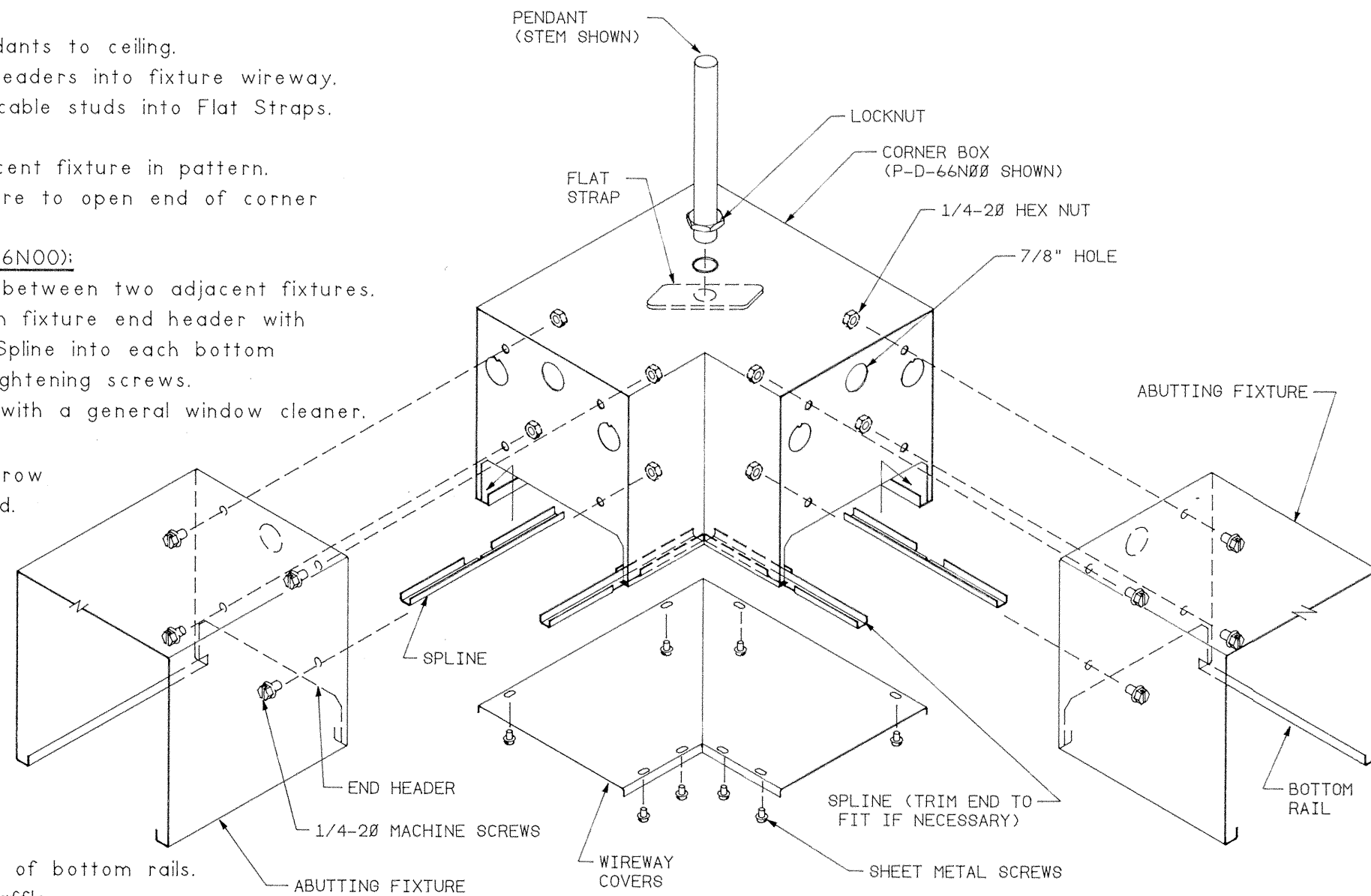
11. Replace Wireway covers and clean exterior surfaces with a general window cleaner.

12. DIFFUSER INSTALLATION:

- A) Center Dividers (found in polybag) are used at each row joint ONLY when Plastic lenses or Louvers are used. Refer to fixture instruction sheets.
- B) PARABOLIC BAFFLES (PBSS or PBSG) are supplied in (3) pieces consisting of a mitred corner baffle and (2) straight leg baffles. Shift mitred baffle into opening first and lower into place by pulling down on baffle until lip sits on bottom rails. Shift each leg baffle into opening and abutt the mitred baffle.
- C) BLADE BAFFLES (BW, BB, BA, BZ) are supplied in (3) pieces consisting of a mitred corner baffle and (2) straight leg baffles. Shift mitred baffle into opening first and rest on top of bottom rails. Shift each leg baffle into opening and abutt mitred baffle.
- D) LENSES and LOUVERS are supplied in (2) mitred halves. Shift into opening and rest on top edge of bottom rails. Lenses are installed with smooth side up.



DIFFUSER INSTALLATION



VIEW "B"