

**INSTALLATION INSTRUCTIONS**

**P-ID-7700  
FIXTURE**

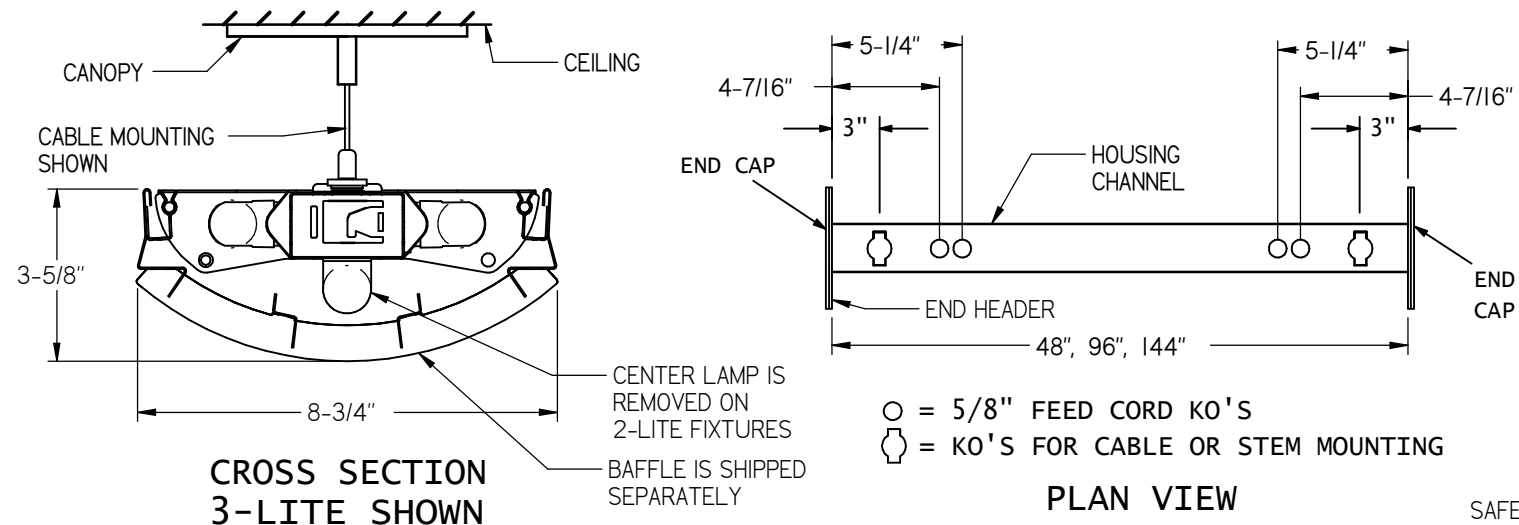
FIXTURE TYPE \_\_\_\_\_

P/C **510543-1000**

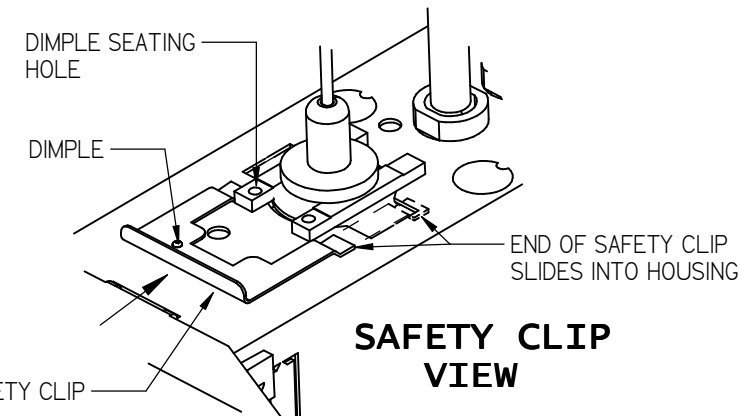
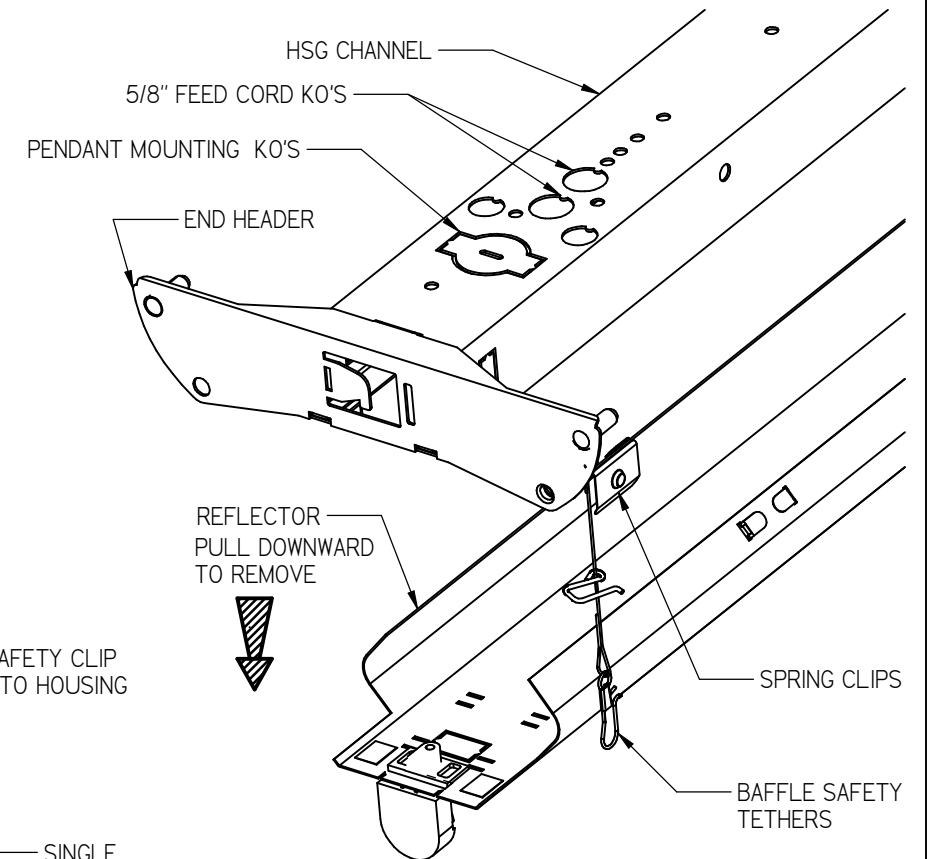
DATE: 5-27-08

PG. 1 OF 3

DO NOT MODIFY OR ALTER THIS PRODUCT IN ANY WAY, OR INSTALL IN ANY FASHION WHICH IS CONTRARY TO THE INSTRUCTIONS CONTAINED HEREIN. IF YOU HAVE ANY QUESTIONS REGARDING THIS PRODUCT OR THE INSTALLATION OF IT, PLEASE CALL LITECONTROL ENGINEERING AT 781-294-0100.



**VIEW A →  
REFLECTOR REMOVAL AT FEED LOCATIONS**



**GENERAL NOTES: (READ SHEETS COMPLETELY BEFORE STARTING)**

1. Leave protective wrapping material on fixture until they are mounted: This will protect finish from damage.
2. Fixtures are supplied with factory installed branch circuit wiring. Refer to supplemental instruction sheet for making connections.
3. Fixtures are mounted with Litecontrol cable assemblies or stems and maybe used in combination with each other. Approximate installed weight of fixture is 4 lbs per foot of length.
4. 144" length housing channels have been pre-stressed and crowned along the length to compensate for the weight of the baffles when installed.

**INSTRUCTIONS:**

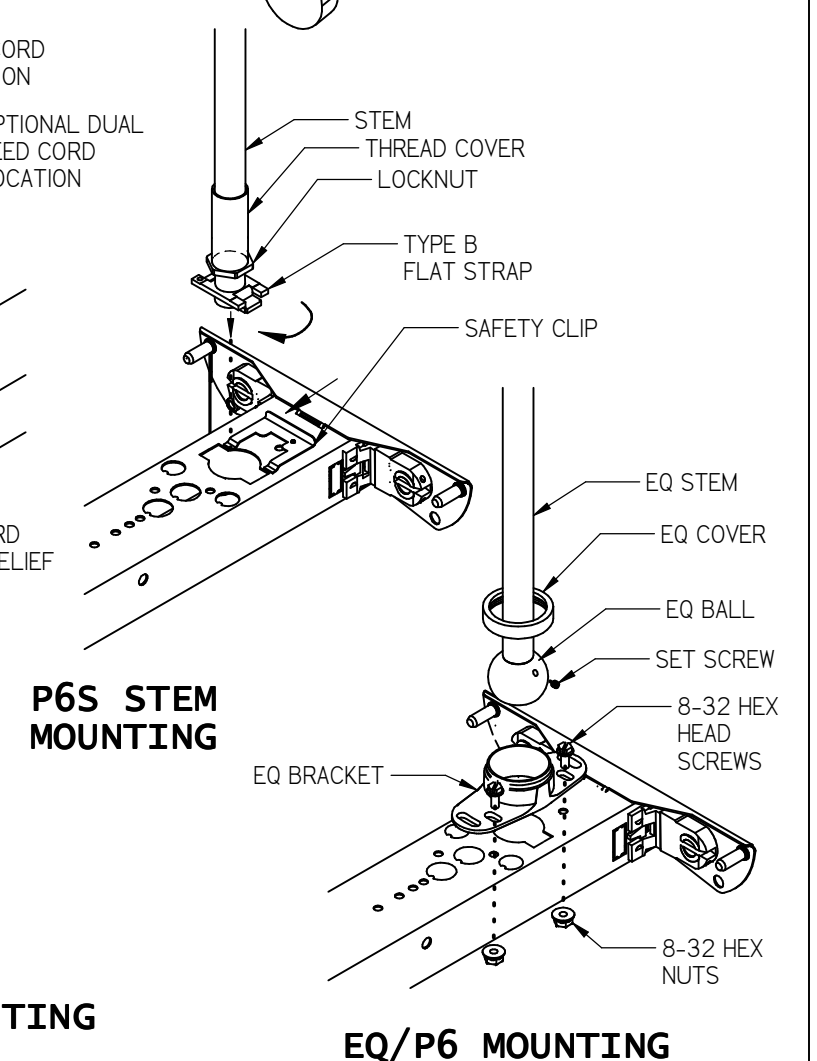
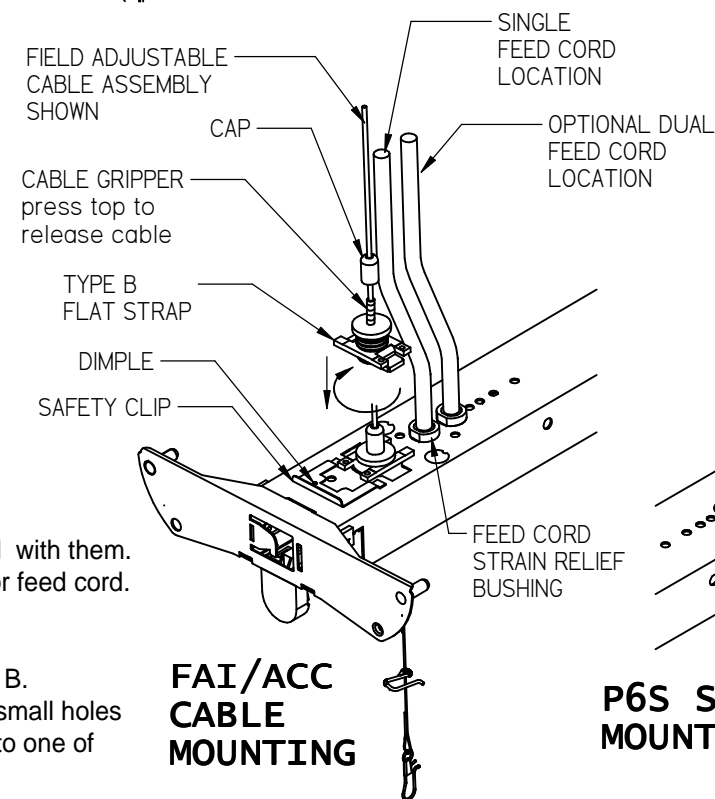
**1. AT FEED LOCATIONS ONLY:**

Remove Reflector from Housing Channel by grasping sides of Reflector and pulling downward. Note: Reflectors for 2-lite fixtures can be completely removed from housing. 3-lite fixtures will have attached socket wiring and can be left hanging down from housing. See View "A".

**2. MOUNTING INDIVIDUAL FIXTURES:**

- A) Using the dimensions shown in the Plan View above, locate and mount pendants (cables or stems) to ceiling per Installation instructions shipped with them.
- B) Remove pendant knockouts at both ends of housing channel as shown in View A. If fixture is hung with cable, also remove one 5/8" knockout for feed cord. Remove 2nd knockout if dual feed is required at the same end. NOTE: Optional dual feed Canopy will be required. Stem mounting does not require the removal of the 5/8" KO's. Electrical feed may be brought thru the stems.
- C) **FOR CABLE OR STEM ATTACHMENT AT FIXTURE:** Thread a "Type B" Flat strap on to the bottom of a Cable Gripper or Stem. Refer to View B. Lift housing channel up and insert Flat Strap thru pendant knockouts in housing. Rotate Flat Strap 90 degrees to engage, making sure that the small holes in the Flat Strap face towards end of housing. Slide Safety Clips between top of housing and Flat Strap making sure that dimple in clip seats into one of the small holes in the Flat Strap. Use locking pliers to force dimple into hole in safety clip.  
**FOR EQ/P6 STEM ATTACHMENT AT FIXTURE:** Reflectors will be have to be removed for access to mounting EQ brackets. Refer to View B. Mount EQ brackets to top of housing with (2) 8-32 hex head screws and nuts as shown. Lift housing up and insert EQ ball into bracket and thread EQ covers onto Brackets.
- D) Level fixture by sliding cables up or down in grippers or threading stems into flat straps. Secure cable in place with gripper caps or stem with locknuts.

3. Attach feed cord (when cable mounting is used) with strain relief bushing, thru 5/8" knockouts as shown  
 Make electrical connections in fixture wireway and replace Reflector by pushing it up over housing sides until spring clips engage holes in housing sides.  
 NOTE: Fixtures with a Daylight Sensor option require field attachment of Sensor Mounting Box to Reflector before re-attachment, See View "C" on page 2.



**VIEW B  
PENDANT MOUNTING**

**INSTALLATION INSTRUCTIONS**

**P-ID-7700  
FIXTURE**

FIXTURE TYPE \_\_\_\_\_

P/C **510543-1000**

DATE: 5-27-08

PG. 2 OF 3

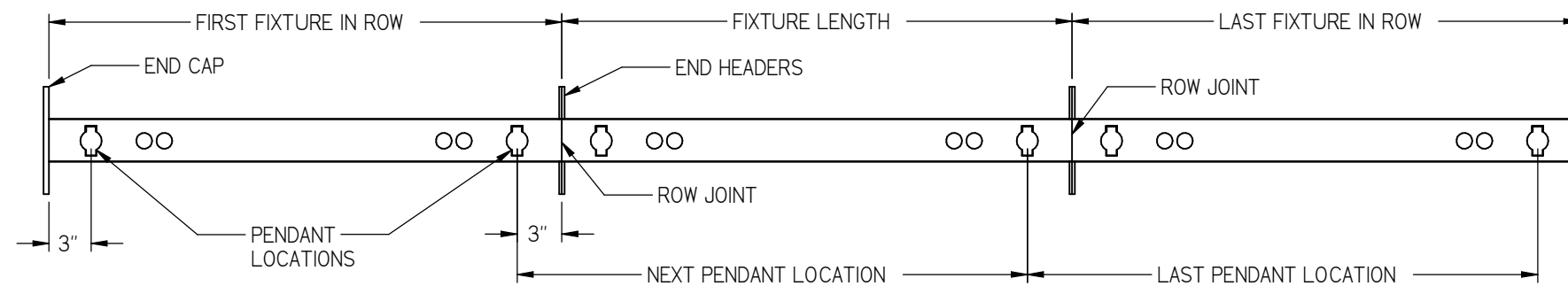
DO NOT MODIFY OR ALTER THIS PRODUCT IN ANY WAY, OR INSTALL IN ANY FASHION WHICH IS CONTRARY TO THE INSTRUCTIONS CONTAINED HEREIN. IF YOU HAVE ANY QUESTIONS REGARDING THIS PRODUCT OR THE INSTALLATION OF IT, PLEASE CALL LITECONTROL ENGINEERING AT 781-294-0100.

**3A. DAYLIGHT SENSOR BOX MOUNTING.**

Fixtures with Daylight Sensors are factory wired to fixture and require field attachment of Sensor Box to Reflector. See View C. Insert the 4 tabs on bottom of Sensor Box thru the rear set of slots in the Reflector and finger bend tabs over flush with inside surface of reflector. Carefully replace Reflector while coiling sensor wires back into fixture wireway.

4. Mount End Caps (shipped separately) to both ends of fixture with (2) 8-32 nuts as shown. See View D.

**GO TO STEP 7**



**PLAN VIEW FOR ROW MOUNTED FIXTURES**

**5. MOUNTING ROWS OF FIXTURES:**

NOTE: Fixtures are installed connected to each other at row joint per steps below.

- A) Refer to Plan View above and on page 1 for locations of ko's that require removal for each fixture in row. Non-feed Cable locations or Stem mounted fixtures do not require removal of 5/8" KO's. Locate and Mount cables or stems to ceiling per instructions shipped with them and Plan view Above.
- B) Starting with the first fixture in row, Attach cables or stems to fixture per step 2 on page 1 and level fixture.
- C) At row joint end of the first fixture, bend End Header Tab outward as shown in View E on page 3.
- D) On the next fixture hung in row, bend end header tab outwards toward row joint. Lift fixture up and attach one end to pendant while inserting the end header tab into the mating slot opening of the first fixture. The hook end of tab can rest in mating slot while the branch circuit wiring connections are made between the two fixtures. After connections are complete, push wiring back thru opening and into fixture wireway.
- E) Slide fixture up against the first fixture at row joint and secure with (2) 1/4-20 x 3/8" long machine screws and nuts. Make sure fixtures are level before tightening screws.

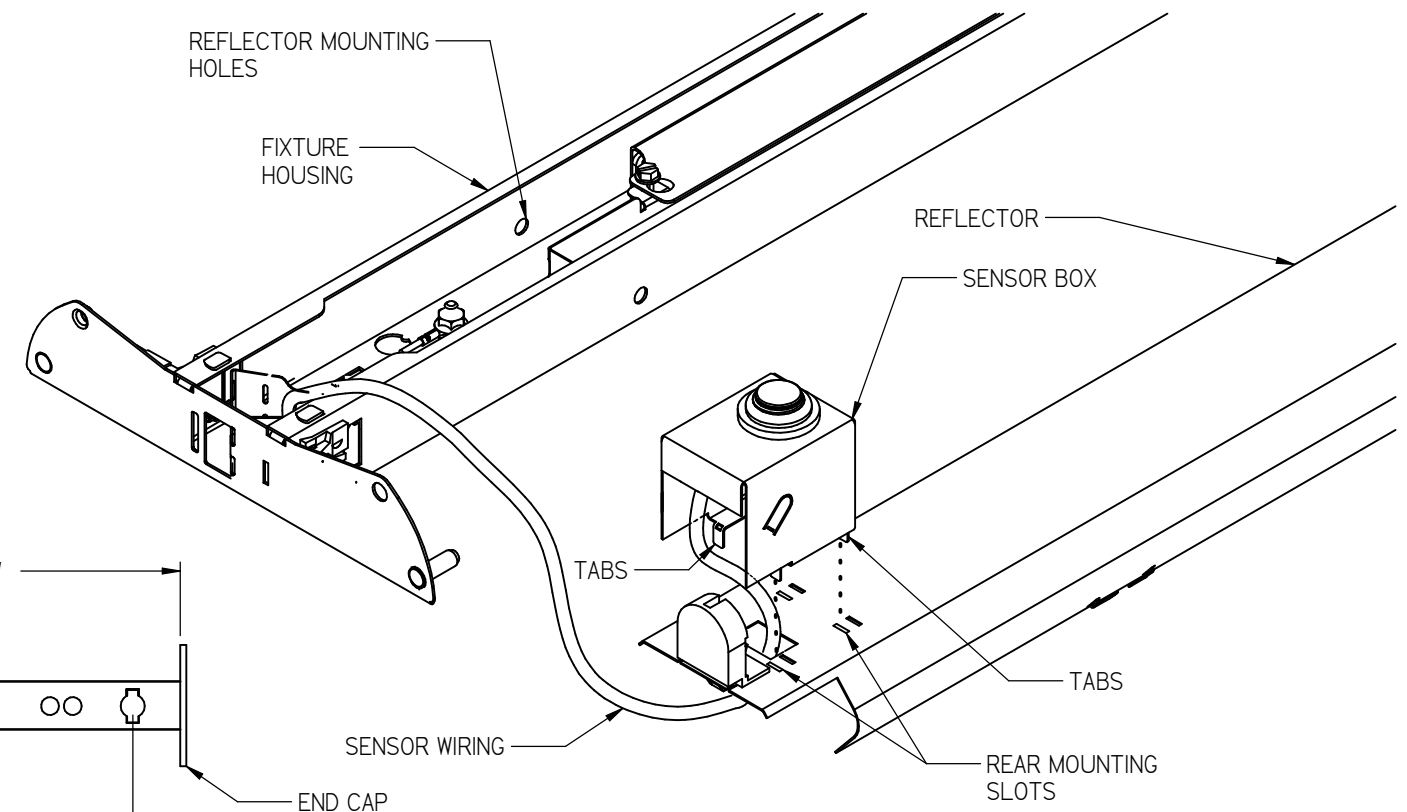
Repeat these steps for each additional fixture in row.

6. Attach End Caps to both ends of row as shown in View D.

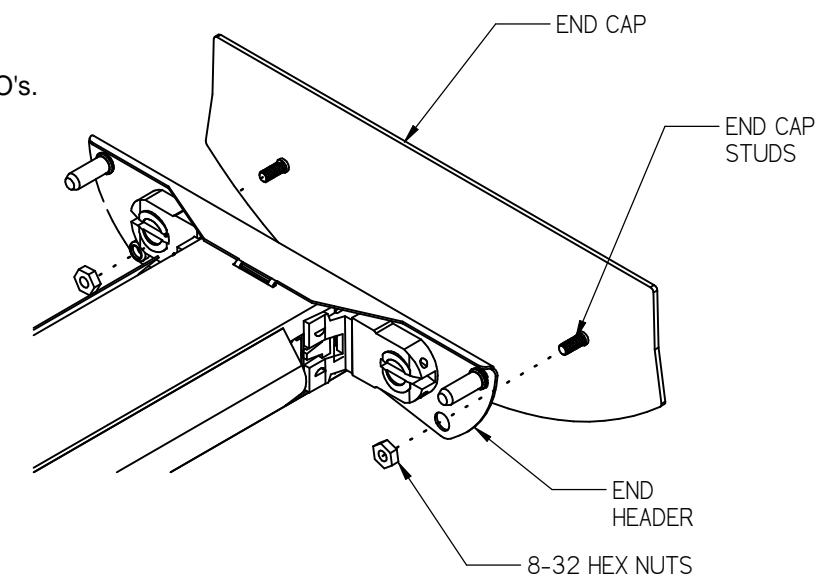
**7. LAMP INSTALLATION:**

Insert lamp pins into sockets and rotate lamps 90 degrees to lock into position.

NOTE: for lamp replacement, outboard lamps maybe removed from fixture without removing baffle, center lamp can be accessed by pulling downward on baffle until it disengages from studs. It is not necessary to remove tethers, baffle will drop approximately 6" downward and allow access to center lamp.



**VIEW C  
SENSOR BOX MOUNTING**



**VIEW D  
END CAP ATTACHMENT**

**INSTALLATION INSTRUCTIONS**

**P-ID-7700  
FIXTURE**

FIXTURE TYPE \_\_\_\_\_

P/C **510543-1000**

DATE: 5-27-08

PG. 3 OF 3

DO NOT MODIFY OR ALTER THIS PRODUCT IN ANY WAY, OR INSTALL IN ANY FASHION WHICH IS CONTRARY TO THE INSTRUCTIONS CONTAINED HEREIN. IF YOU HAVE ANY QUESTIONS REGARDING THIS PRODUCT OR THE INSTALLATION OF IT, PLEASE CALL LITECONTROL ENGINEERING AT 781-294-0100.

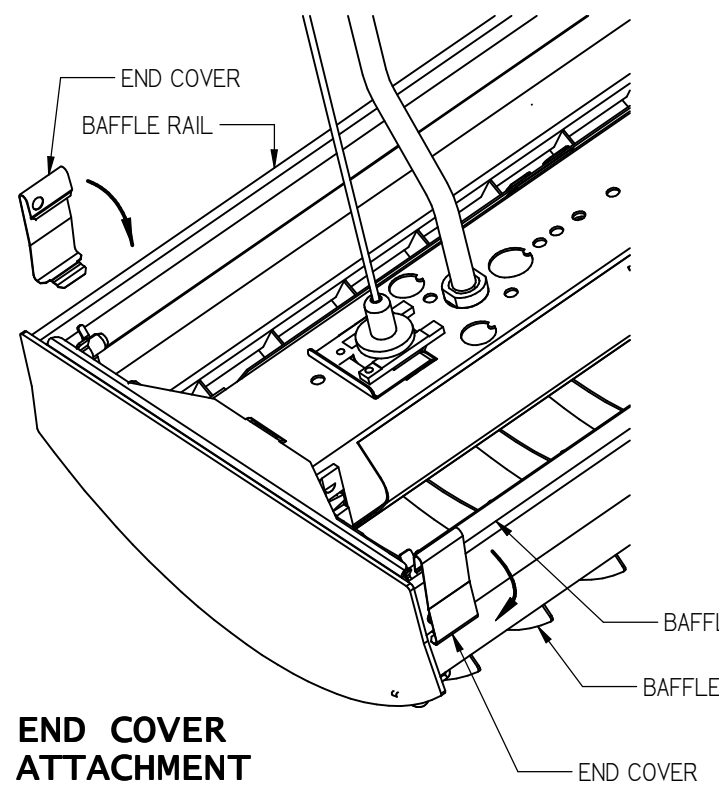
**8. BAFFLE INSTALLATION:** See Views Below.

NOTE: Baffles are shipped separately in 48" lengths.

Litecontrol recommends that for the 144" length fixtures, the center baffle be installed first.

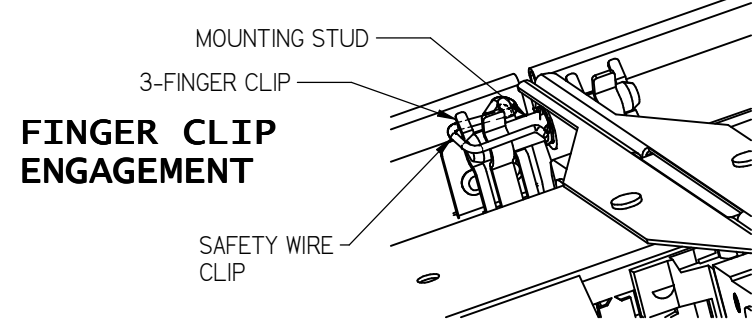
Fixtures with sensor box are supplied with a different baffle that is notched at one end to go over sensor box after installation.

- A) Fixtures are supplied with safety tethers with safety wire clips attached to fixture headers. Open clasp at ends of each Tether and hook clasp thru hole in the 3-finger clips attached to baffle, make sure that tether wires wrap underneath finger clips. Close clasps.
- B) Lift baffle upward and push finger clips on one side of baffle onto studs, swing baffle upward until clips snap onto opposite studs. Slide safety wire clips into 3-finger clip.
- C) Baffles and End Caps are supplied with Splines and End Covers:  
End Covers are positioned next to End Caps, Splines are used to attach baffles abutting each other. To install End Covers, hook top of cover over top edge of baffle rails and snap lower end of cover onto bottom edge of baffle rail. Position End Covers so that they cover rivet heads and are slid up against End Caps. Repeat at opposite end of fixture or row. To install Splines, hook Spline over top edge baffle rails between both baffles and snap lower end of spline onto bottom edges of baffle rails. Position splines so that they cover the 2 rivet heads on both baffles. Repeat at each abutting baffle.

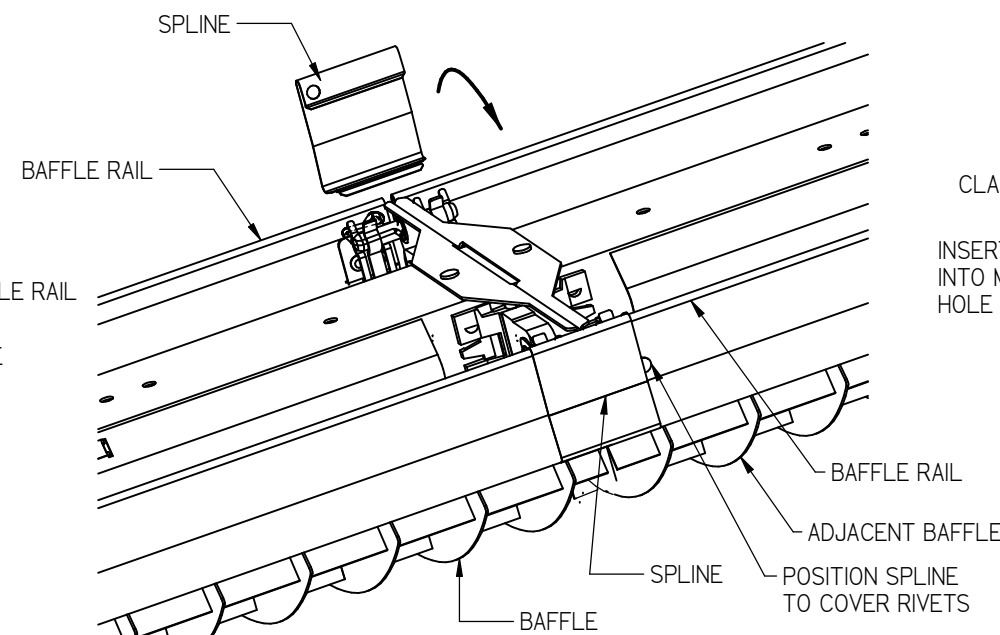


**END COVER ATTACHMENT**

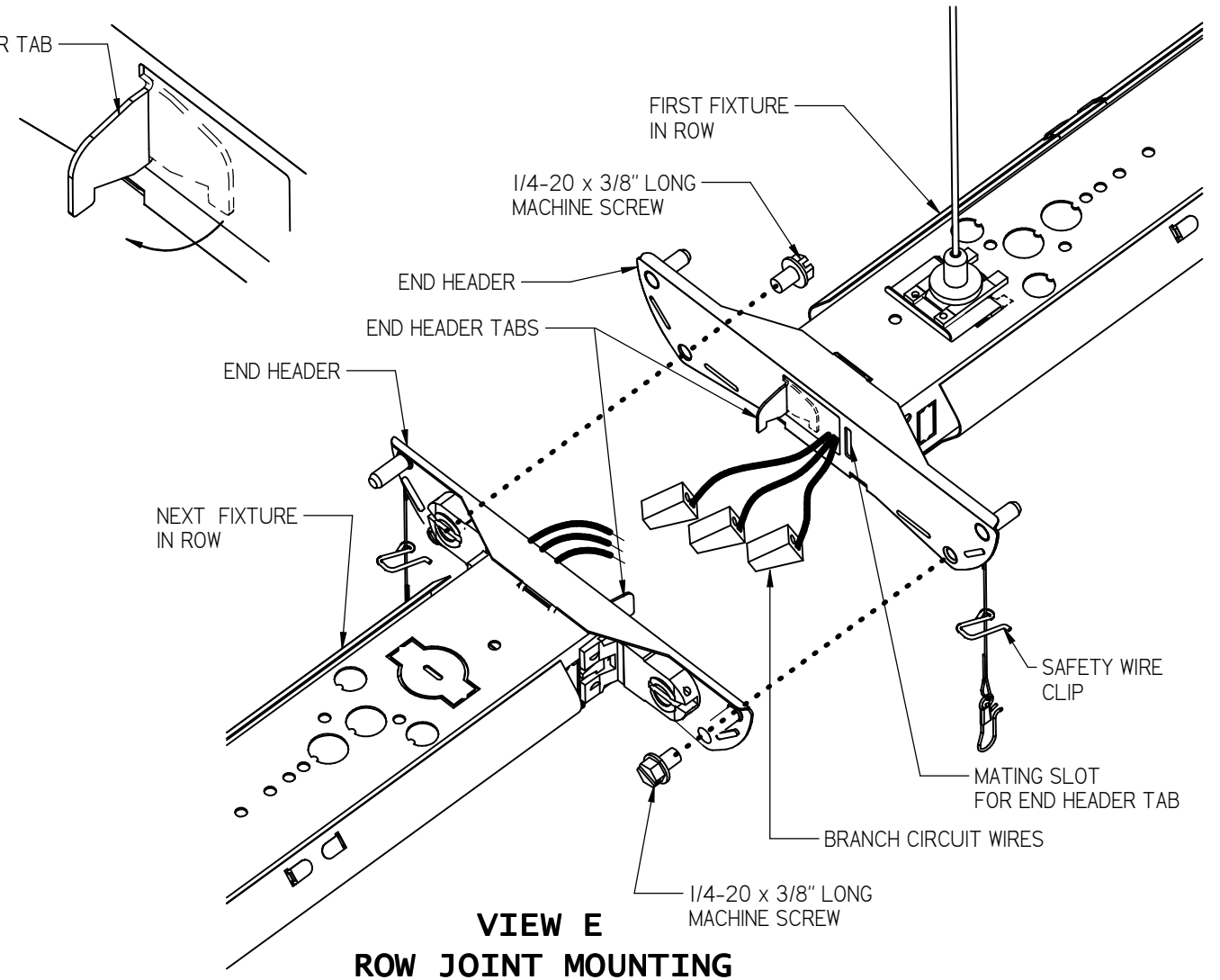
**VIEW F  
BAFFLE INSTALLATION**



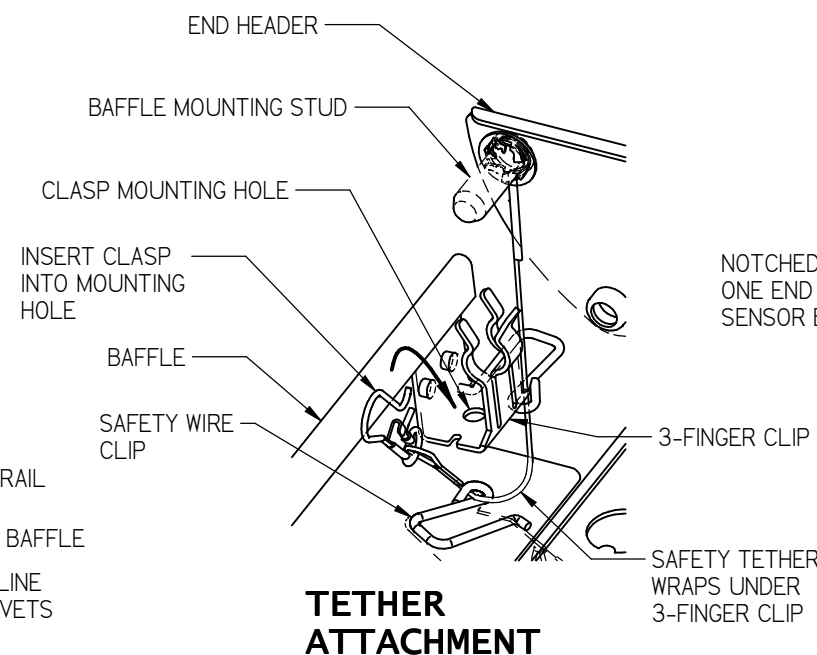
**FINGER CLIP ENGAGEMENT**



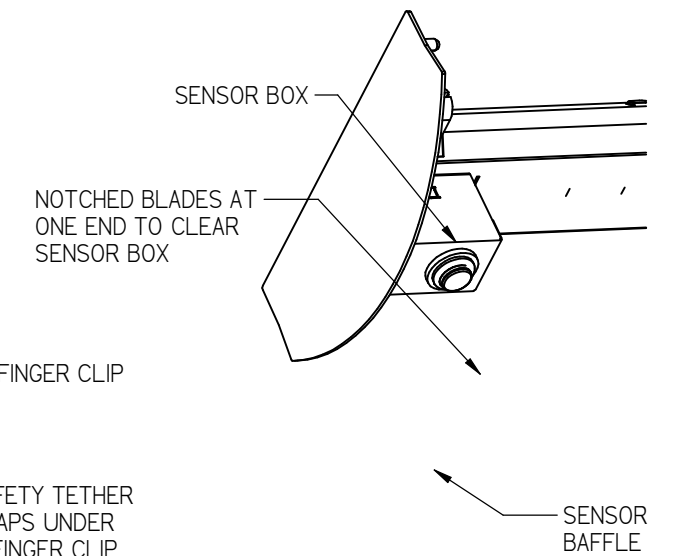
**SPLINE ATTACHMENT**



**VIEW E  
ROW JOINT MOUNTING**



**TETHER ATTACHMENT**



**SENSOR BAFFLE**