

**INSTALLATION INSTRUCTIONS**

**FIXTURE TYPE** \_\_\_\_\_

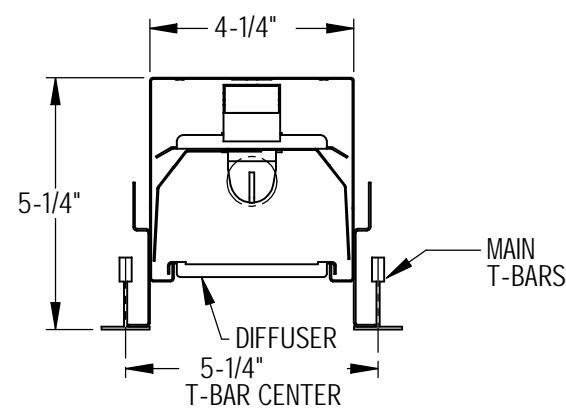
**LGD-4500 FIXTURE**

P/C **510463-1000**

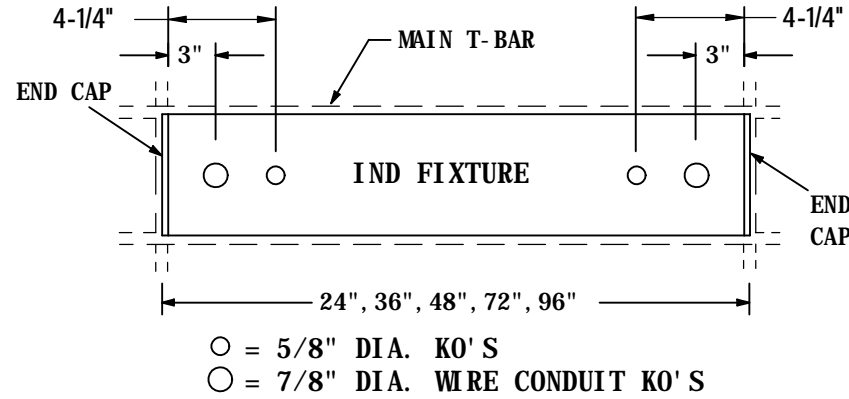
DATE: 10-28-08

PG. 1 OF 2

**DO NOT MODIFY OR ALTER THIS PRODUCT IN ANY WAY, OR INSTALL IN ANY FASHION WHICH IS CONTRARY TO THE INSTRUCTIONS CONTAINED HEREIN. IF YOU HAVE ANY QUESTIONS REGARDING THIS PRODUCT OR THE INSTALLATION OF IT, PLEASE CALL LITECONTROL ENGINEERING AT 781-294-0100.**

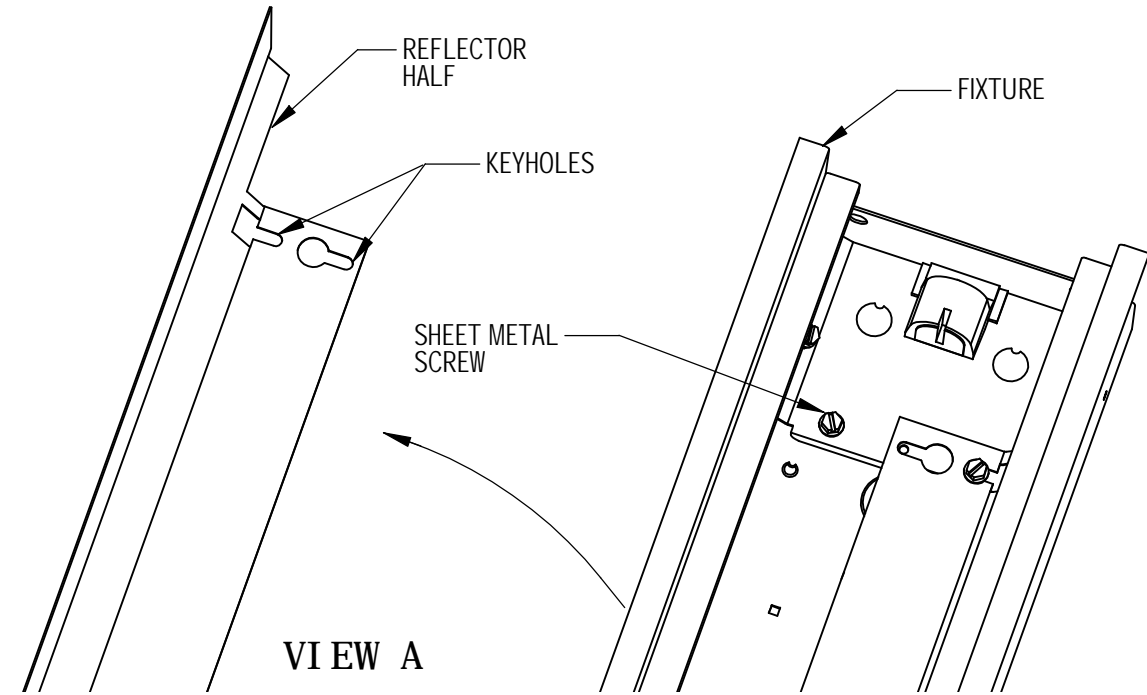


**CROSS SECTION**



**PLAN VIEW**

○ = 5/8" DIA. KO'S  
○ = 7/8" DIA. WIRE CONDUIT KO'S



**VIEW A**

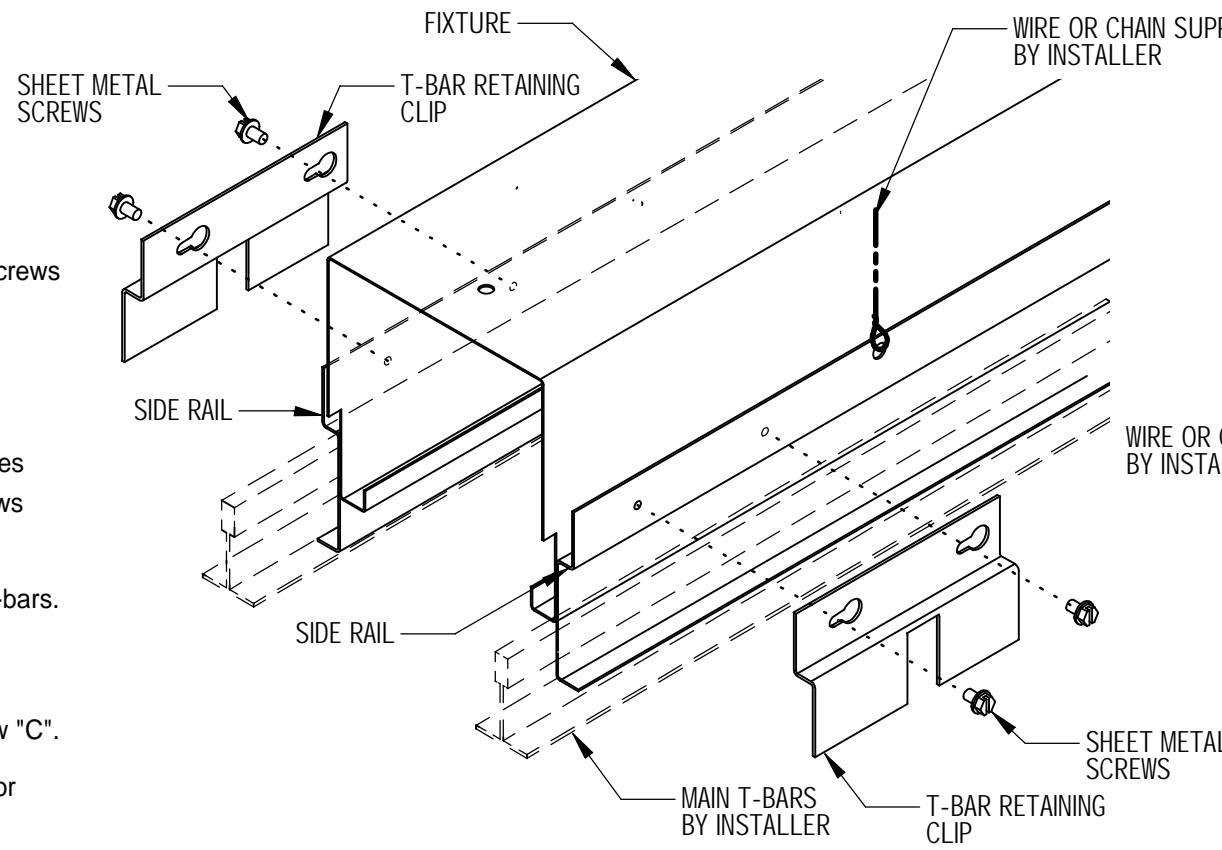
**GENERAL NOTES: (READ SHEETS COMPLETELY BEFORE STARTING)**

1. Leave protective wrapping material on fixture until fixtures are mounted: This will protect finish from damage.
2. Fixtures are supplied with factory installed branch circuit wiring. Refer to supplemental instruction sheet for making connections.
3. All ceiling T-bars must be installed before fixtures are mounted in ceiling.

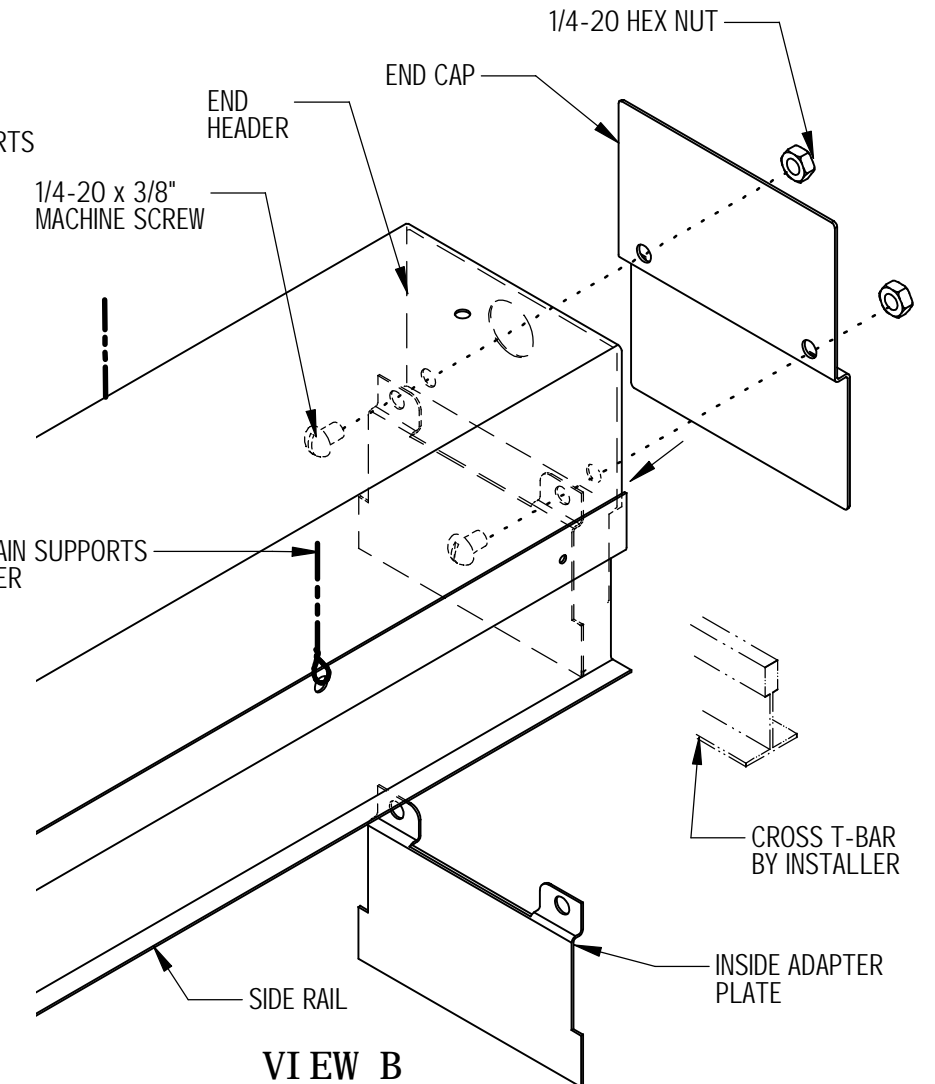
**INSTRUCTIONS:**

1. Remove Reflector Halves from fixture by loosening (2 or 4) sheet metal screws and shifting them out thru keyholes. See View "A".
2. **MOUNTING INDIVIDUAL (IND) FIXTURES:**
  - A) Remove a 5/8" KO. or a 7/8" KO. at wire feed location in top of fixture as shown in Plan View above.
  - B) Align an Inside Adaptor Plate (shipped separately) with End Header holes and holes in End Cap; secure with (2) 1/4-20 x 3/8" long machine screws and hex nuts. See View "B". Repeat at opposite end of fixture.
  - C) Lift fixture up into ceiling plenum and seat fixture Side Rails onto main T-bars. Attach T-bar Retaining Clips (shipped separately) to each Side Rail with (2) sheet metal screws. (2) clips are required for 24", 36" & 48" length fixtures and (6) clips are required for 72" & 96" length fixtures. See View "C".
  - D) 1/4" holes have been provided in the side rails for supplementary chain or wire support as may be required by local codes. Installed weight of fixture is approximately 5 lbs per ft of fixture length.
  - E) Bring wire feed thru KO and make connections in fixture wireway.

GO TO STEP 5 ON PAGE 2



**VIEW C**



**VIEW B**

INSTALLATION INSTRUCTIONS

LGD-4500 FIXTURE

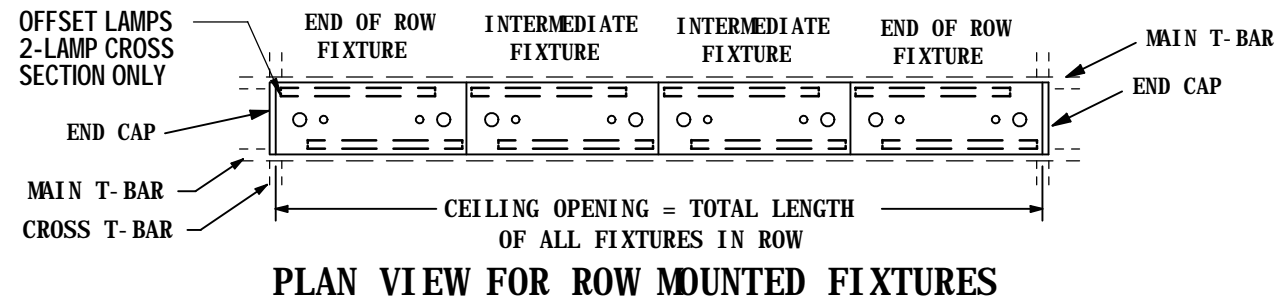
FIXTURE TYPE \_\_\_\_\_

P/C 510463-1000

DATE: 10-28-08

PG. 2 OF 2

DO NOT MODIFY OR ALTER THIS PRODUCT IN ANY WAY, OR INSTALL IN ANY FASHION WHICH IS CONTRARY TO THE INSTRUCTIONS CONTAINED HEREIN. IF YOU HAVE ANY QUESTIONS REGARDING THIS PRODUCT OR THE INSTALLATION OF IT, PLEASE CALL LITECONTROL ENGINEERING AT 781-294-0100.



3. MOUNTING ROWS OF FIXTURES:

NOTE: Fixtures mounted together in continuous rows will consist of End of Row (EOR) and Intermediate (INT) type fixtures. Individual (IND) type fixtures cannot be mounted in continuous rows. Two lamp cross section fixtures have offset lamp locations, position fixtures in rows as shown above.

- Starting with an End of Row fixture, attach an Inside Adaptor Plate and End Cap to notched end of housing per Step 2B on page 1.
- Remove a KO in top of housing for wire feed and install EOR fixture into ceiling per Steps 2C & 2D.
- Lift an Intermediate fixture up into ceiling opening and abutt the EOR fixture. See View "D". Loosely bolt this fixture to EOR fixture at row joint with (2) 1/4-20 x 3/8" long machine screws and nuts.
- Press a Spline (found in polybag) into each bottom rail at row joint for alignment.
- Level each fixture and align seams at row joint before tightening all screws.
- Mount T-Bar Retaining Clips per step 2C. Attach (2) more clips at row joint. Repeat steps 3C, 3D, 3E & 3F for each additional Intermediate fixture in row.
- Install another Inside Adaptor Plate and End Cap in the last EOR fixture in row before installing into ceiling.

- Bring wire feed thru the 7/8" holes in the end headers and make connections.  
NOTE: EOR FIXTURES with 2 circuit wiring (2CWQ) will require one of the EOR fixture's Black and RED circuit wires be switched when connecting to mating INT fixture to maintain inline lighting when powered.

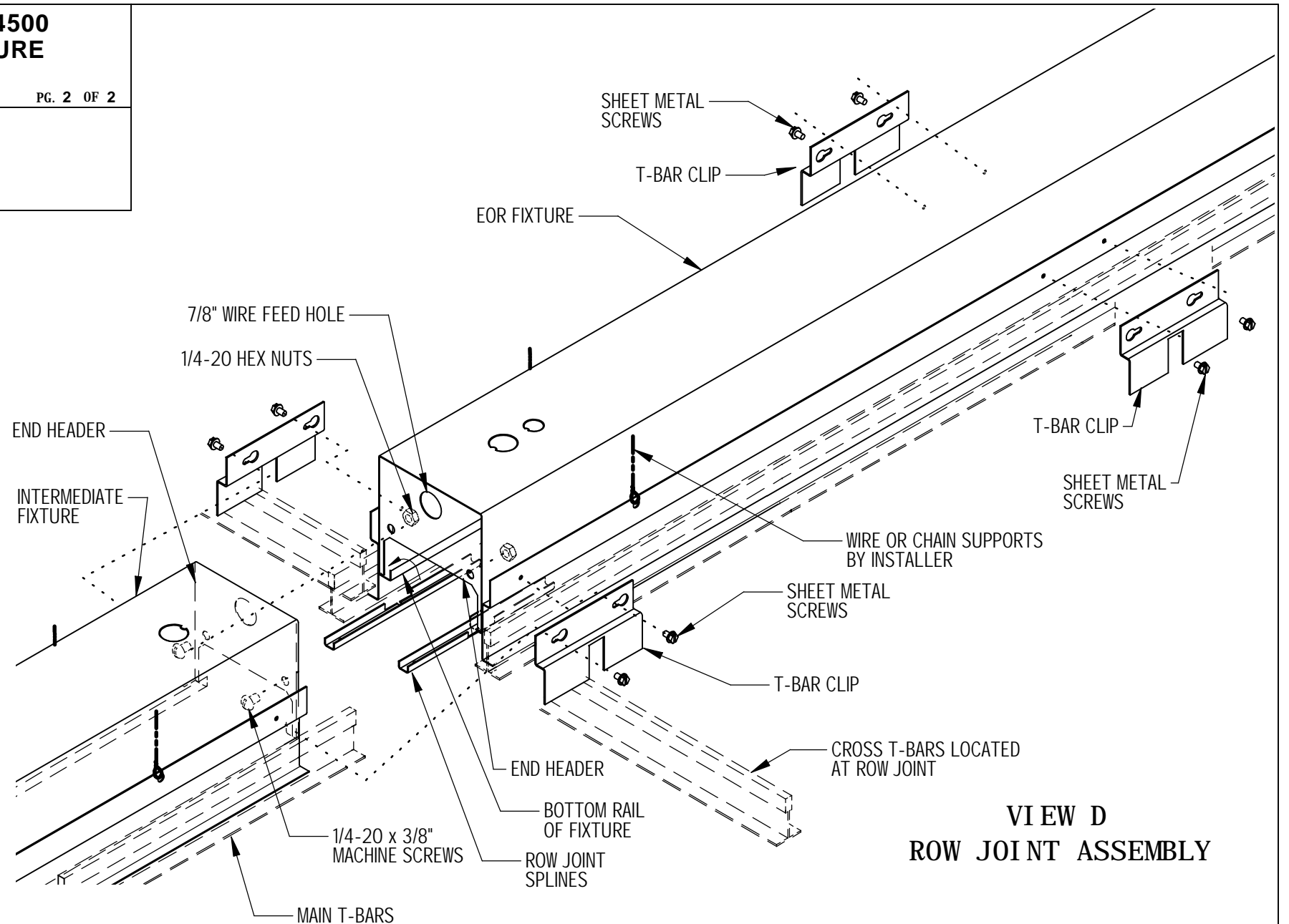
- Replace all Reflector Halves and remove all wrapping material.

- Clean fixture exteriors with a general window cleaner and install lamps (by others).  
Install lamps by inserting lamp pins into sockets and rotating lamp 90 degrees to lock in place.

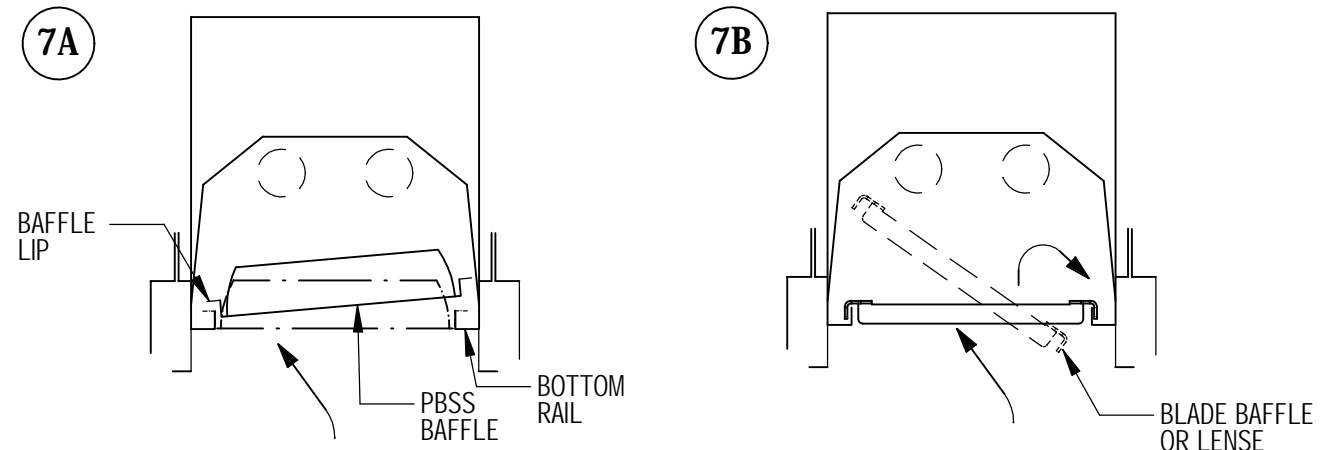
7. DIFFUSER INSTALLATION:

Use caution when installing diffusers to prevent lamp damage.

- PARABOLIC BAFFLES (PBSS or PBCWM) are shifted into fixture opening and lowered into place by pulling down on baffle until lip sits on bottom rails
- LENSES and BLADE BAFFLES are shifted into fixture opening and rest on top of bottom rails. Lenses are installed with the smooth side up.



VIEW D  
ROW JOINT ASSEMBLY



DIFFUSER INSTALLATION

INSTALLATION INSTRUCTIONS

FIXTURE TYPE \_\_\_\_\_

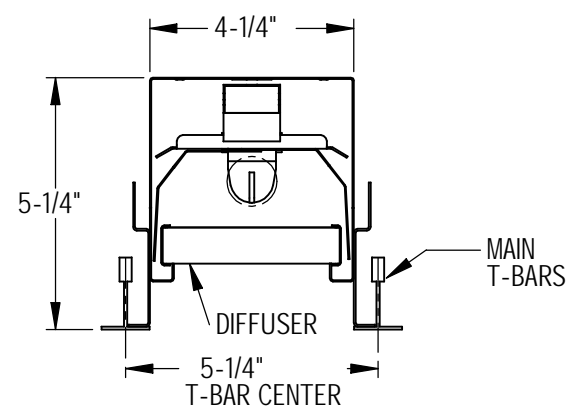
LGD-4500  
FIXTURE

P/C 510463-0000

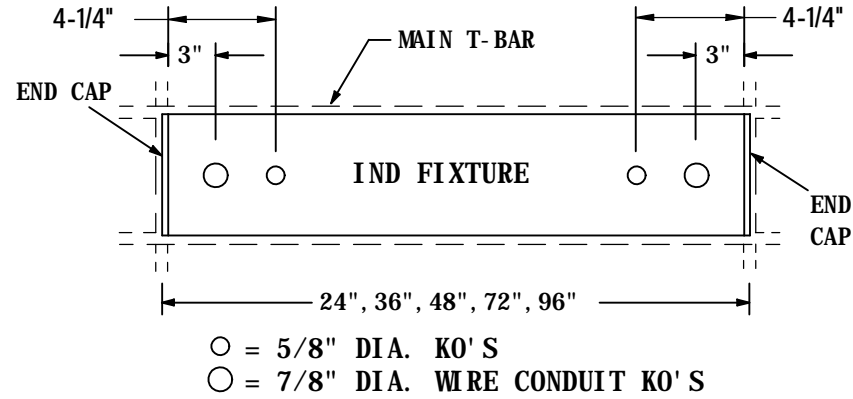
DATE: 1-6-05

PG. 1 OF 2

DO NOT MODIFY OR ALTER THIS PRODUCT IN ANY WAY, OR INSTALL IN ANY FASHION WHICH IS CONTRARY TO THE INSTRUCTIONS CONTAINED HEREIN. IF YOU HAVE ANY QUESTIONS REGARDING THIS PRODUCT OR THE INSTALLATION OF IT, PLEASE CALL LITECONTROL ENGINEERING AT 781-294-0100.



CROSS SECTION



PLAN VIEW

GENERAL NOTES: (READ SHEETS COMPLETELY BEFORE STARTING)

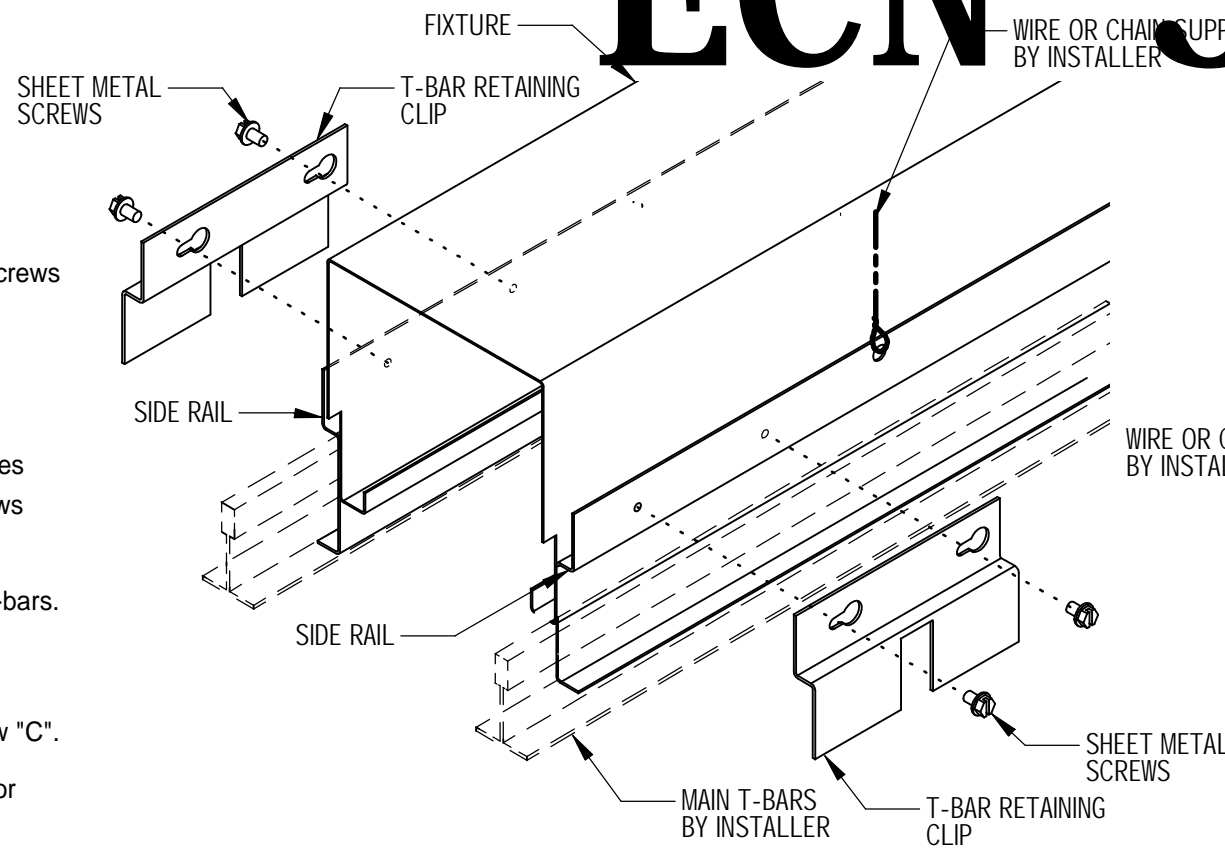
1. Leave protective wrapping material on fixture until fixtures are mounted: This will protect finish from damage.
2. Fixtures are supplied with factory installed branch circuit wiring. Refer to supplemental instruction sheet for making connections.
3. All ceiling T-bars must be installed before fixtures are mounted in ceiling.

INSTRUCTIONS:

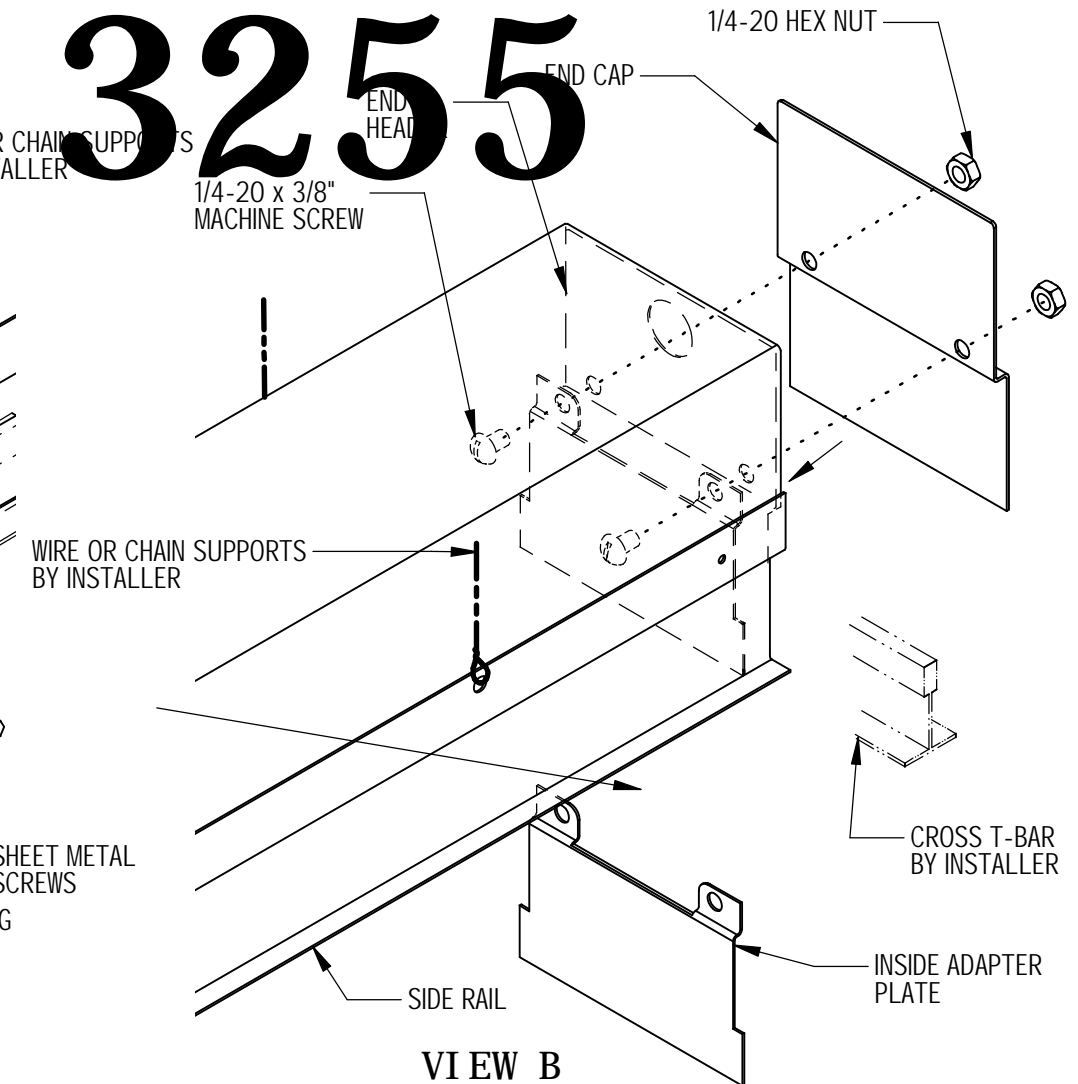
1. Remove Reflector Halves from fixture by loosening (2 or 4) sheet metal screws and shifting them out thru keyholes. See View "A".
2. MOUNTING INDIVIDUAL (IND) FIXTURES:
  - A) Remove a 5/8" KO. or a 7/8" KO. at wire feed location in top of fixture as shown in Plan View above.
  - B) Align an Inside Adaptor Plate (shipped separately) with End Header holes and holes in End Cap; secure with (2) 1/4-20 x 3/8" long machine screws and hex nuts. See View "B". Repeat at opposite end of fixture.
  - C) Lift fixture up into ceiling plenum and seat fixture Side Rails onto main T-bars. Attach T-bar Retaining Clips (shipped separately) to each Side Rail with (2) sheet metal screws. (2) clips are required for 24", 36" & 48" length fixtures and (6) clips are required for 72" & 96" length fixtures. See View "C".
  - D) 1/4" holes have been provided in the side rails for supplementary chain or wire support as may be required by local codes. Installed weight of fixture is approximately 5 lbs per ft of fixture length.
  - E) Bring wire feed thru KO and make connections in fixture wireway.

GO TO STEP 5 ON PAGE 2

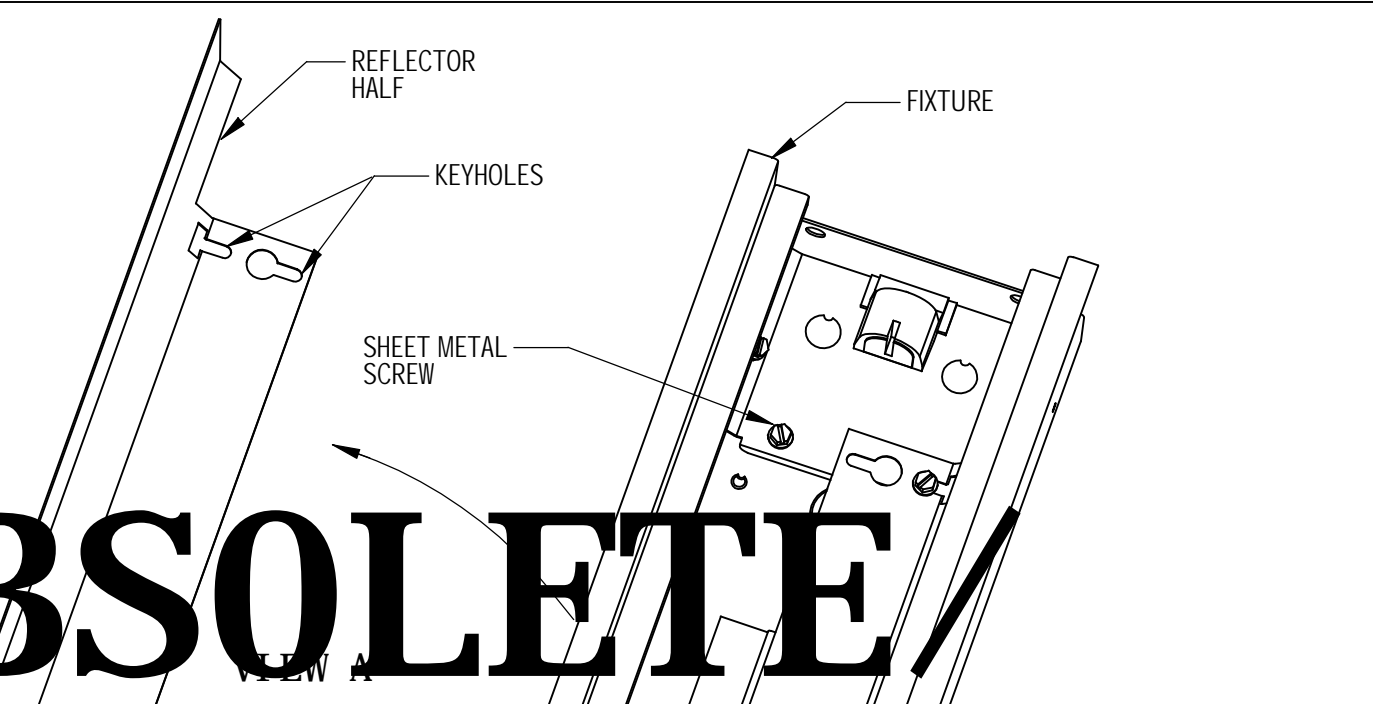
**OBSOLETE**  
**ECN 3255**



VIEW C



VIEW B



INSTALLATION  
INSTRUCTIONS

FIXTURE TYPE \_\_\_\_\_

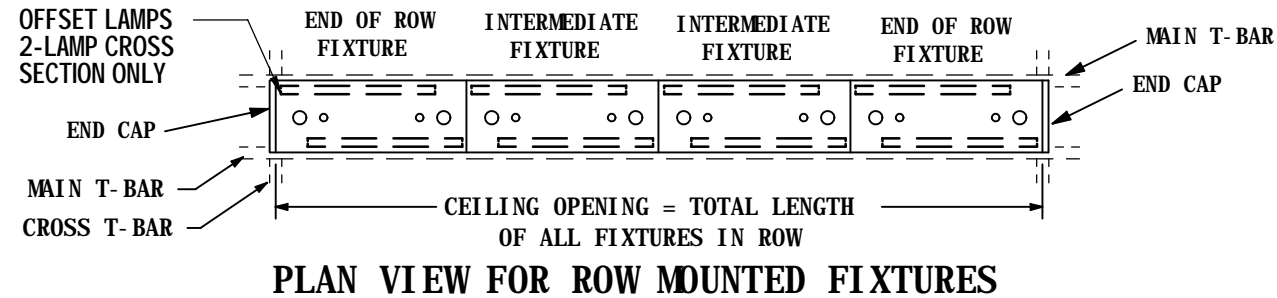
LGD-4500  
FIXTURE

P/C 510463-0000

DATE: 1-6-05

PG. 2 OF 2

DO NOT MODIFY OR ALTER THIS PRODUCT IN ANY WAY, OR INSTALL IN ANY FASHION WHICH IS CONTRARY TO THE INSTRUCTIONS CONTAINED HEREIN.  
IF YOU HAVE ANY QUESTIONS REGARDING THIS PRODUCT OR THE INSTALLATION OF IT, PLEASE CALL LITECONTROL ENGINEERING AT 781-294-0100.



3. MOUNTING ROWS OF FIXTURES:

NOTE: Fixtures mounted together in continuous rows will consist of End of Row (EOR) and Intermediate (INT) type fixtures. Individual (IND) type fixtures cannot be mounted in continuous rows. Two lamp cross section fixtures have offset lamp locations, position fixtures in rows as shown above.

- Starting with an End of Row fixture, attach an Inside Adaptor Plate and End Cap to notched end of housing per Step 2B on page 1.
- Remove a KO in top of housing for wire feed and install EOR fixture into ceiling per Steps 2C & 2D.
- Lift an Intermediate fixture up into ceiling opening and abutt the EOR fixture. See View "D". Loosely bolt this fixture to EOR fixture at row joint with (2) 1/4-20 x 3/8" long machine screws and nuts.
- Press a Spline (found in polybag) into each bottom rail at row joint for alignment.
- Level each fixture and align seams at row joint before tightening all screws.
- Mount T-Bar Retaining Clips per step 2C. Attach (2) more clips at row joint. Repeat steps 3C, 3D, 3E & 3F for each additional Intermediate fixture in row.
- Install another Inside Adaptor Plate and End Cap in the last EOR fixture in row before installing into ceiling.

4. Bring wire feed thru the 7/8" holes in the end headers and make connections.

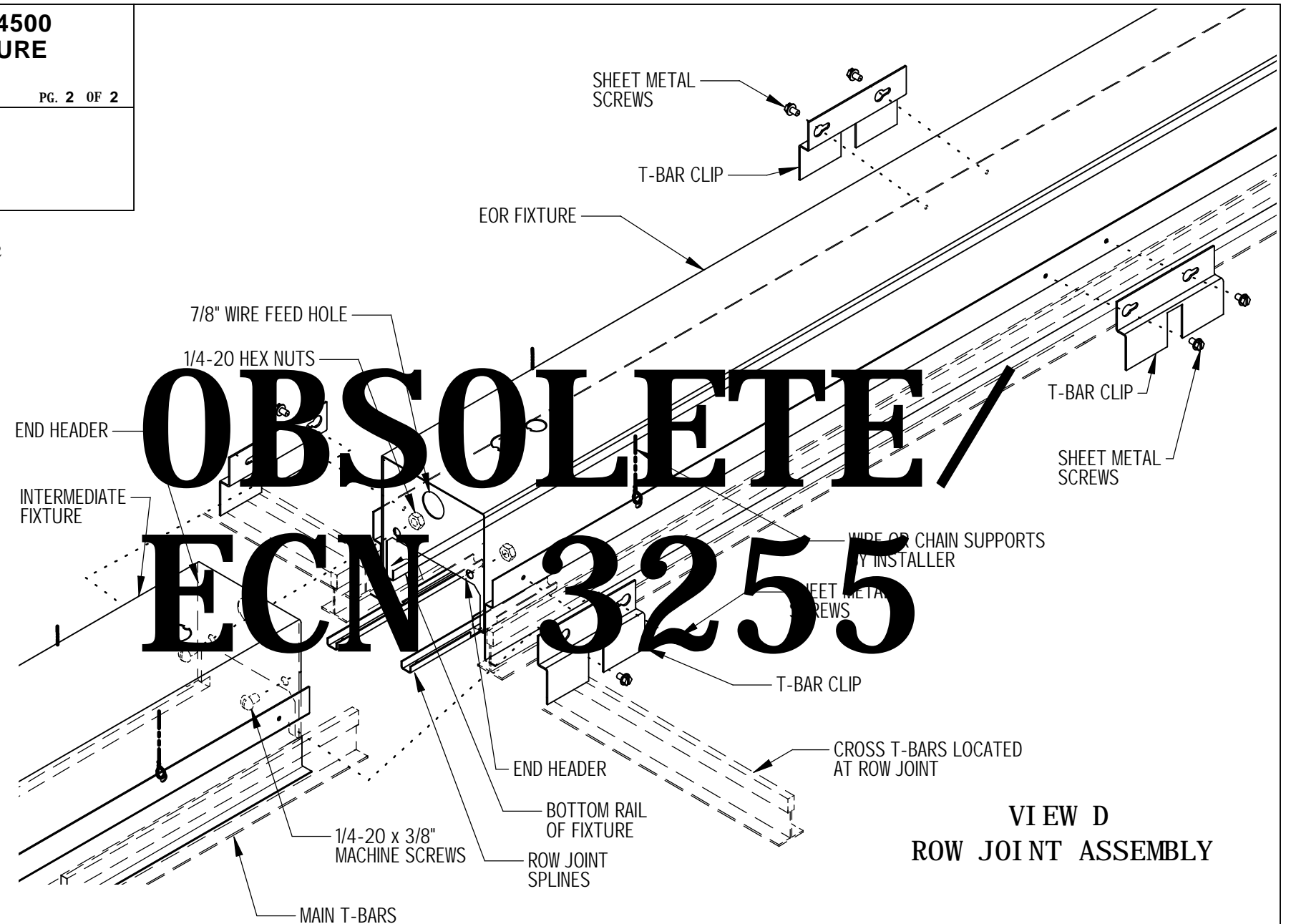
5. Replace all Reflector Halves and remove all wrapping material.

6. Clean fixture exteriors with a general window cleaner and install lamps (by others). Install lamps by inserting lamp pins into sockets and rotating lamp 90 degrees to lock in place.

7. DIFFUSER INSTALLATION:

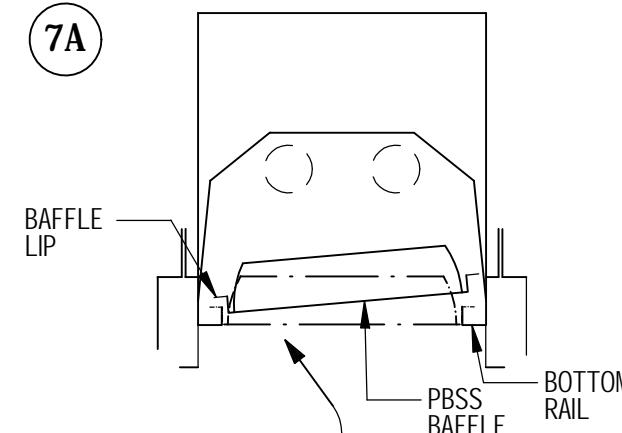
Use caution when installing diffusers to prevent lamp damage.

- PARABOLIC BAFFLES (PBSS or PBCWM) are shifted into fixture opening and lowered into place by pulling down on baffle until lip sits on bottom rails
- LENSES and BLADE BAFFLES are shifted into fixture opening and rest on top of bottom rails. Lenses are installed with the smooth side up.

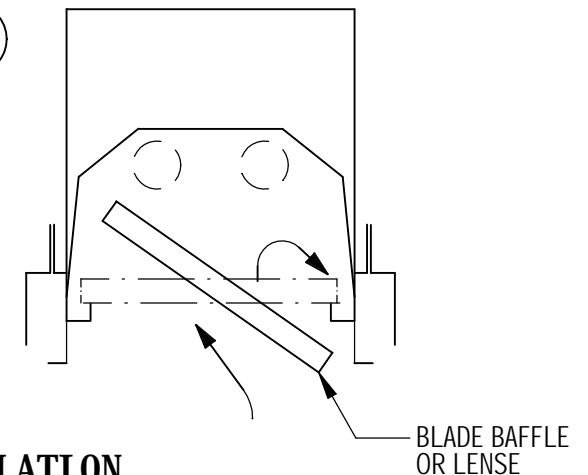


**OBSOLETE**  
**ECN 3255**

7A



7B



DIFFUSER INSTALLATION